

LOC/DME I-EKO 108.5 Chan 22	APP CRS 243°	Rwy Idg TDZE Apt Elev	6418 5064 5140
--	------------------------	-----------------------------	---

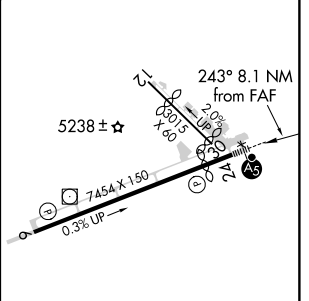
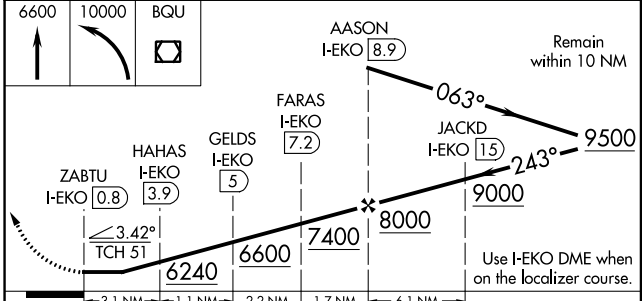
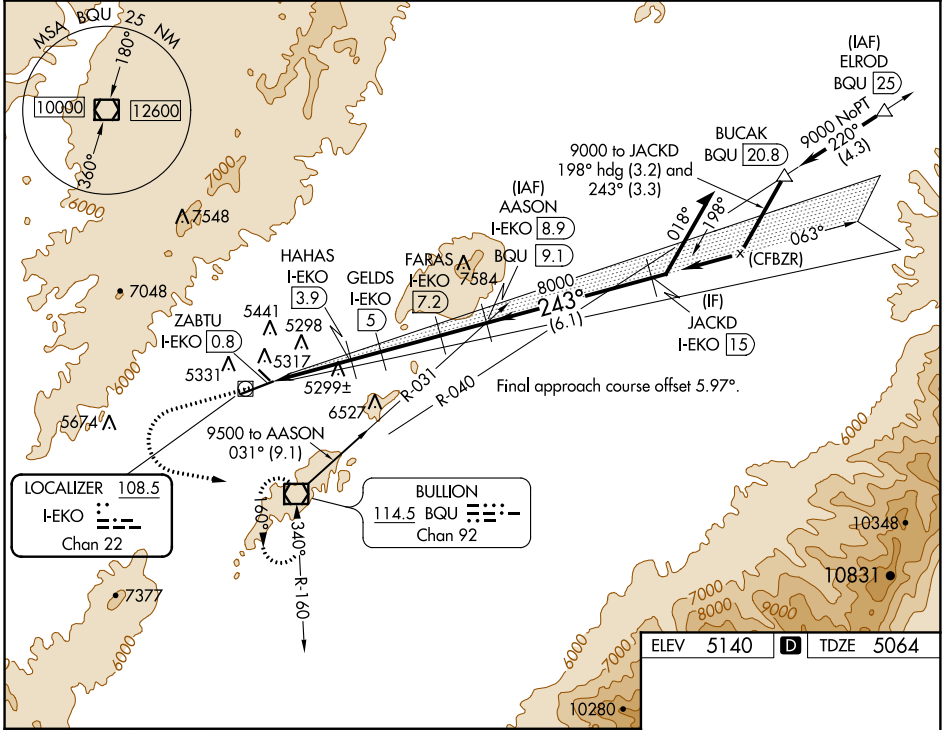
LDA/DME RWY 24

ELKO RGNL (EKO)

Night landing: Rwy 12, 24 NA. Inoperative table does not apply to Cats A and B. Helicopter visibility reduction below 1 SM NA. For inop MALSR, increase S-24 Cat C and D visibility to 2 miles.

MALSR
MISSED APPROACH: Climb to 6600 then climbing left turn to 10000 direct BQU VOR/DME and hold, continue climb-in-hold to 10000.

AWOS-3PT 119.275	SALT LAKE CENTER 132.25 338.35	UNICOM 123.0 (CTAF) 0
----------------------------	--	---------------------------------



CATEGORY	A	B	C	D
S-24	5800-1	736 (700-1)	5800-1 5/8	736 (700-1 5/8)
CIRCLING	5920-1 780 (800-1)	6100-1 1/2 960 (1000-1 1/2)	6620-3 1480 (1500-3)	6980-3 1840 (1900-3)

MIRL Rwy 6-24 0

SW-4, 26 APR 2018 to 24 MAY 2018

SW-4, 26 APR 2018 to 24 MAY 2018