

AIRCRAFT CAMPING

— INFORMATION

AOPA FLY-IN | JACK EDWARDS NATIONAL AIRPORT | OCTOBER 26-27, 2018



Thank you for your interest in camping at the AOPA Fly-In at Gulf Shores, AL! We are excited to have you with us. **Camping will *only* be available Thursday, Friday, and Saturday nights.** Arrivals before Thursday will be handled per normal airport/FBO operations, and you will be responsible for securing your own lodging/transportation off airport property.

[CLICK TO REGISTER FOR CAMPING](#)

AIRCRAFT CAMPING

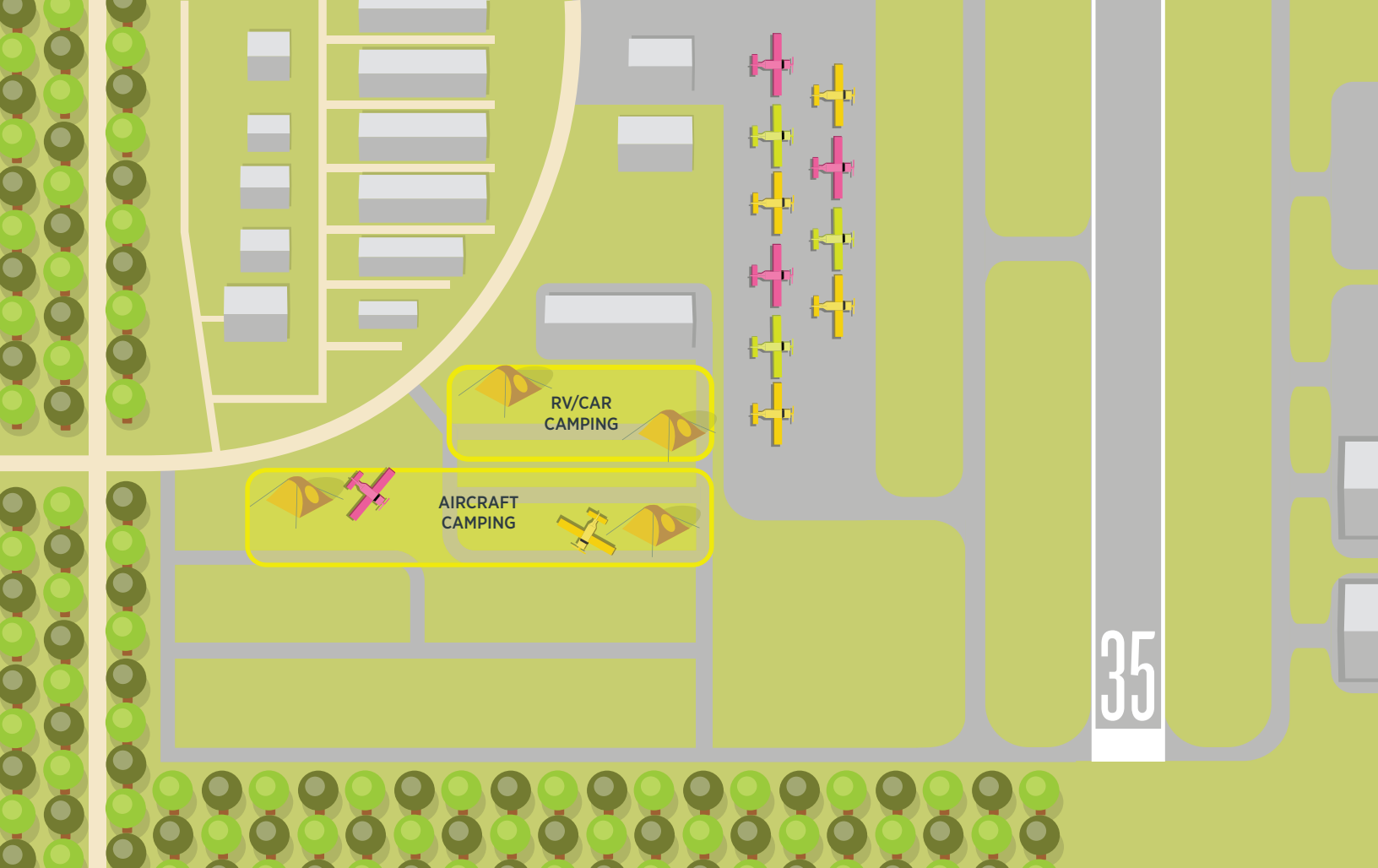
- All campers must pre-pay and pre-register. Camping position is not assured without reservation.
- Bring your own food and water! Food is NOT provided on the airfield.
- Ground transportation is NOT provided to get to locations offsite (taxi or rental car reservations must be made on your own).
- Food, water, sunscreen & rain gear are recommended.
- Restroom and shower facilities are “primitive.” Porta-potties and handwashing stations will be provided; limited shower facilities may be available, but no guarantee on hot water. There may be lots of campers for just a couple of showers. Come prepared!
- Aircraft camping is open from 12:00 noon Thursday, October 25 until 12:00 noon Sunday, October 28, 2018.

EARLY ARRIVALS

- Camping NOT permitted prior to Thursday, October 25, 2018.
- Aircraft Parking will be at designated transient spaces managed by FBO.
- Overnight fees will apply.

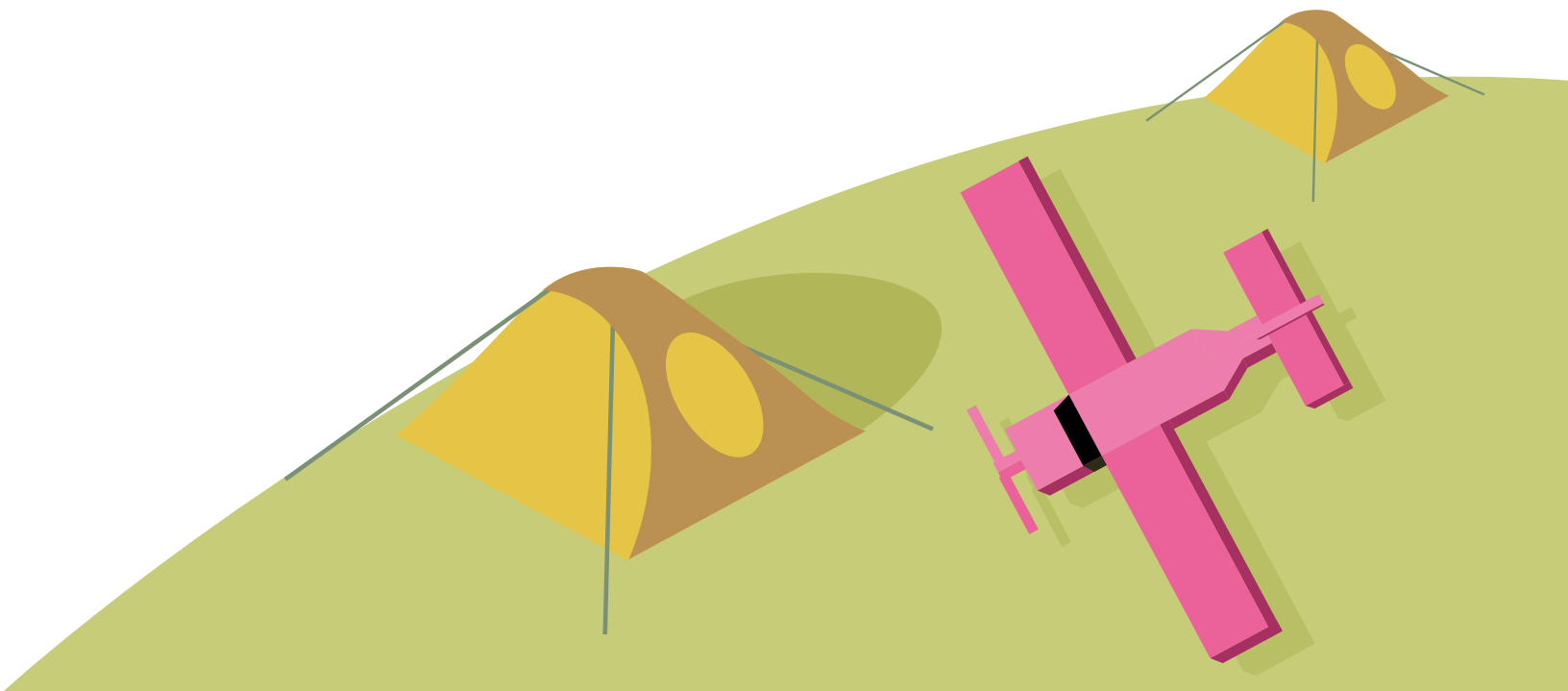
NOTE NOTAM EFFECTIVE TIMES AND AIRPORT CLOSURE TIMES FOUND IN THE PILOT INFO PACKET AND FLIGHT PROCEDURES (NOTAM).

CHOCKS OR TIE DOWNS ARE REQUIRED AND NOT PROVIDED. BRING YOUR OWN.



CAMPING AREA

Aircraft for camping will be parked in the grass in a designated area shown above as a yellow box. Upon landing, follow the ground frequency published in the fly-in NOTAM (published 3 weeks prior to the event). After you register, you'll receive a "C" (for camping) to place on aircraft glare shield to be marshalled to the designated camping area.



CAMPSITE RULES AND RESPONSIBILITIES

- **You are responsible for providing your own chocks/tie down equipment.**
- **Pets are NOT permitted.**
- Only one tent per plane unless a second tent is needed for immediate aircraft passengers/family members. All tents must fit within the footprint of the aircraft.
- Use caution when starting engines to be certain pedestrians and other campers are safely away from the aircraft.
- Alcoholic beverage consumption is prohibited in the camping area.
- Smoking is prohibited in the camping area.
- No open flames, fires, camp stoves, etc.
- Coolers must remain secured at your campsite location.
- This is “primitive camping,” so be prepared for your personal comfort.
 - Ice will not be available at the fly-in, so plan to provide your own.
 - Portable restroom facilities and handwashing stations will be provided.
 - Shower facilities may be available with limited hot water capability.

FIRE SAFETY

Jack Edwards National Airport strictly prohibits wood campfires and charcoal grills anywhere on airport property, including the Aircraft, RV, and Car/Tent camping areas. This includes camp stoves, propane burners, etc.

COURTESY

- Keep your campsite clean and your noise levels down.
- Leave campsites the way you found them and place all waste in designated receptacles.
- Do not hang laundry or other items.
- Maintain appropriate clothing modesty.



[CLICK TO REGISTER FOR CAMPING](#)