

AIRCRAFT CAMPING

— INFORMATION —

AOPA FLY-IN | MISSOULA INTERNATIONAL AIRPORT | JUNE 15-16, 2018



Thank you for your interest in camping at the AOPA Fly-In at Missoula, MT! We are excited to have you with us. **Camping will only be available Thursday, Friday, and Saturday nights. Arrivals before Thursday will be handled per normal airport/FBO operations, and you will be responsible for securing your lodging/transportation off airport property.**

[CLICK TO REGISTER FOR CAMPING](#)

AIRCRAFT CAMPING

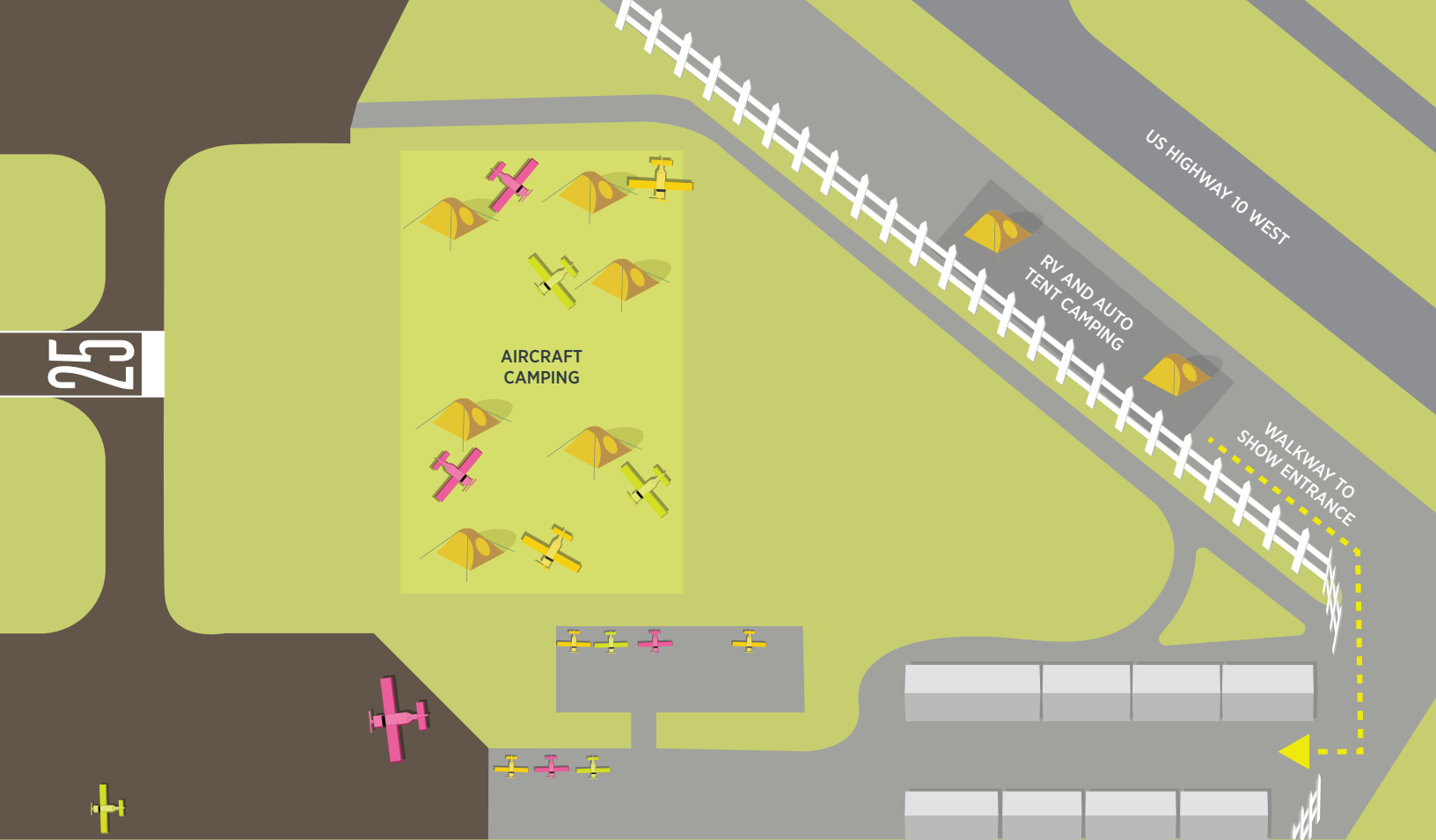
- All campers must pre-pay and pre-register. Camping position is not assured without a reservation.
- Please bring your own food and water! Food is NOT provided on the airfield.
- Ground transportation is NOT provided to get to locations offsite (taxi or rental car reservations must be made on your own).
- Food, water, sunscreen & rain gear recommended.
- Restroom and shower facilities are “primitive.” Porta-potties and handwashing stations will be provided; limited shower facilities may be available, but no guarantee on hot water. There may be lots of campers for just a couple of showers. Please come prepared!
- Aircraft camping is open from 12:00 noon Thursday, June 14 until 12:00 noon Sunday, June 17, 2018.

EARLY ARRIVALS

- Camping NOT permitted before Thursday, June 14, 2018.
- Aircraft parking will be at designated transient spaces managed by FBO.
- Overnight fees will apply.
- We will not be able to accommodate you in AOPA attendee parking if you arrive before Thursday, June 14, 12:00 noon.

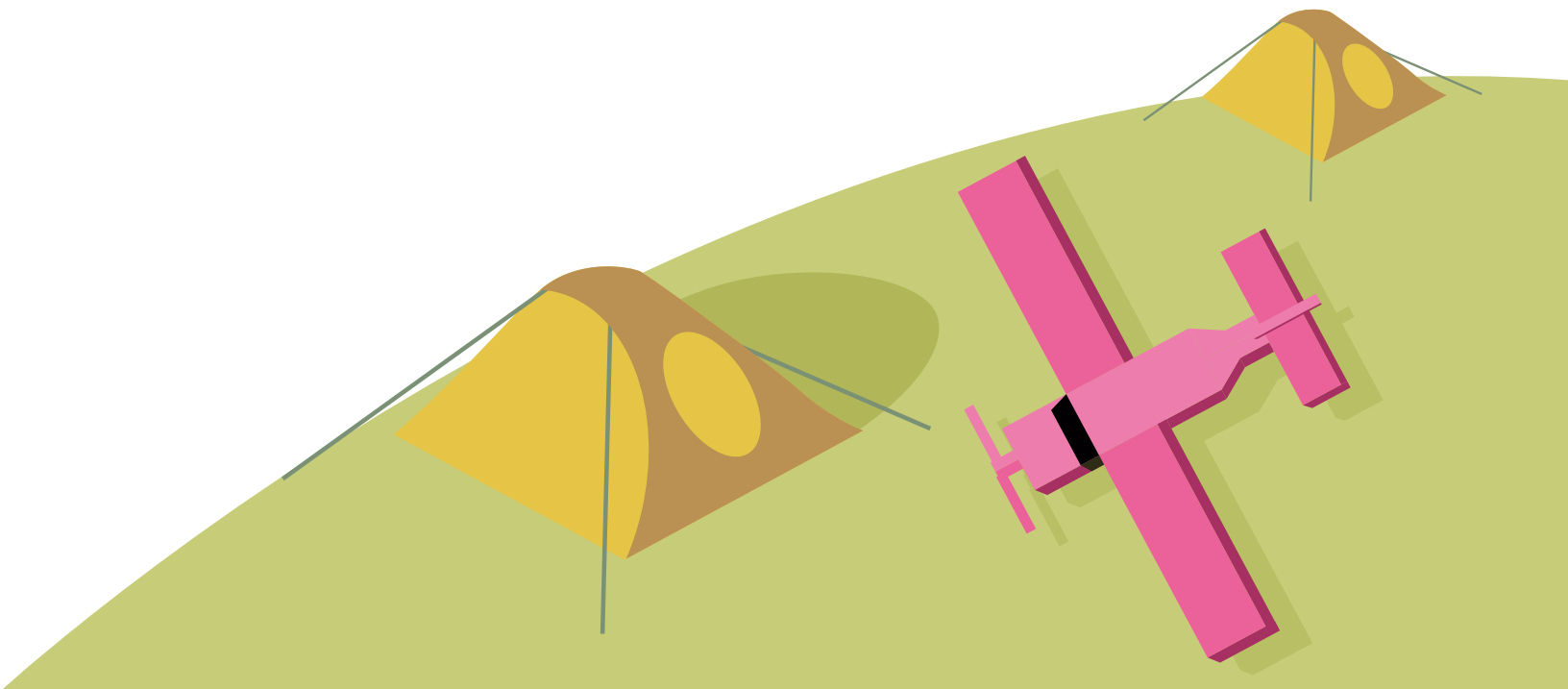
PLEASE NOTE NOTAM EFFECTIVE TIMES AND AIRPORT CLOSURE TIMES FOUND IN THE PILOT INFO PACKET AND FLIGHT PROCEDURES (NOTAM).

CHOCKS OR TIE DOWNS ARE REQUIRED AND NOT PROVIDED. PLEASE BRING YOUR OWN.



CAMPING AREA

Aircraft for camping will be parked in the grass in a designated area shown above. Upon landing, follow the ground frequency published in the fly-in NOTAM (published approximately six weeks before the event). After you register, you'll receive a "C" (for camping) to place on aircraft glare shield to be marshalled to the designated camping area.



CAMPSITE RULES AND RESPONSIBILITIES

- You are responsible for providing your own chocks/tie-down equipment.
- Pets are NOT permitted.
- Only one tent per plane unless a second tent is needed for immediate aircraft passengers/family members. All tents must fit within the footprint of the aircraft.
- Please use caution when starting engines to ensure pedestrians and other campers are safely away from the aircraft.
- Alcoholic beverage consumption is prohibited in the camping area.
- Smoking is prohibited in the camping area.
- No open flames, fires, camp stoves, etc.
- Coolers must remain secured at your campsite location.
- This is considered “primitive camping,” so please be prepared for your personal comfort.
 - Ice will not be available at the fly-in, so please plan to provide your own.
 - Portable restroom facilities and handwashing stations will be available.
 - Shower facilities may be available with limited hot water capability.

FIRE SAFETY

Missoula International Airport strictly prohibits wood campfires and charcoal grills anywhere on airport property, including the Aircraft, RV, and Car/Tent camping areas. This includes camp stoves, propane burners, etc.

COURTESY

- Keep your campsite clean and your noise levels down.
- Please leave campsites the way you found them and place all waste in provided receptacles.
- Please do not hang laundry or other items.
- Please maintain appropriate clothing modesty.



CLICK TO REGISTER FOR CAMPING