



2013 SUMMIT PILOT INFORMATION PACKET

INCLUDING SPECIAL FLIGHT PROCEDURES

FORT WORTH, TEXAS
OCTOBER 10-12, 2013



2013 AOPA AVIATION SUMMIT | TABLE OF CONTENTS

Overview	03	Meacham Airport After Landing/ Parking Procedures	17-19
Fort Worth Meacham (FTW) Airport Satellite View	04	Parking Fees.....	17
Traffic Management	05	FBO Main Ramp Parking.....	17
Local Training & Practice Approaches	05	FBO Hours of Operation & Contact Information	18
Cautions	05	Rental Car Availability.....	18
Airspace	05	After-hours Departures	18
TSA Gliderport.....	05	Free Shuttle Bus Service/AOPA Summit Transportation Schedule	19
Skydive Cowtown.....	05	Fort Worth Meacham Airport Diagram with Color Coded Parking Areas	20-27
Meacham International Airport General Information	06	Parking area signage.....	21
Parking Areas	06	Red Parking area—Host FBO Texas Jet	22
Vehicular Traffic	06	Blue Parking area—Host FBO American Aero	23
Pre-flight planning	06	Green Parking area—Host FBO American Aero... ..	24
Enroute VFR Flight Following Services	06	Brown Parking area—Host FBO Texas Jet	25
Frequency chart	06	Orange Parking area—Host FBO American Aero	26
Fort Worth Meacham (FTW) Frequency Chart	07	Purple Parking area—Host FBO Texas Jet	27
Dallas/Fort Worth Approach Frequency Chart	07	Other Area Airports	28
VFR Arrival Procedures	08-12	Meacham Airport Departure Procedures	29
Arriving from the West/Southwest; Runways 16/17 In Use	08	Start-up	29
Arriving from the West/Southwest; Runways 34/35 In Use	09	Run-up.....	29
Arriving from the East/Southeast/South; Runways 16/17 In Use	10	Taxi	29
Arriving from the East/Southeast/South; Runways 34/35 In Use	11	Departure Procedure/Graphic Runways 34/35 In Use	30
Arriving from the Northeast/North/Northwest (Optional for East); All Runways	12	Departure Procedure/Graphic Runways 16/17 In Use	31
TCU Football Stadium/Rail Yard Graphic	13	Other Area Airport Graphics	32-34
Holding Pattern Graphics	14-16	Fort Worth Alliance (KAFW)	32
Lake Ray Roberts	14	Sycamore Strip (9F9).....	32
Lake Weatherford	15	Fort Worth Spinks (KFWS).....	33
Benbrook Lake	15	Hicks Airfield (T67).....	33
Eagle Mountain Lake.....	16	Parker Country Airport (KWEA)	34
Decatur Municipal Airport	16	Cleburne Regional (KCPT).....	34

2013 AOPA AVIATION SUMMIT | OVERVIEW

AOPA Summit 2013 is being held this year in Fort Worth, Texas. Fort Worth, *the City of Cowboys and Culture*, is the quintessential Texas city. Also known as “Where the West Begins,” the town was founded as the lawless western outpost of the United States. Now, it’s one of the largest cities in the United States and is known as much for its world class cultural amenities, cuisine and museums as it is for its daily cattle drive. Experience the best of the West in Fort Worth, whether you are going to Tadao Ando’s Modern Art Museum (*Travel + Leisure’s* pick for one of the world’s most beautiful art museums) or spending the day in our Stockyards National Historic District learning to line dance at Billy Bob’s. There’s no better place to be in October than AOPA Summit in Fort Worth, Texas.

This year’s popular Airportfest featuring nearly 100 aircraft on display, live music, food, scenic tours, and much more will be held at Fort Worth Meacham International Airport (FTW). Airportfest will be open on Thursday, October 10, 10AM–5PM, Friday, October 11, 9AM–5PM, and Saturday, October 12, 10AM–4PM. Free shuttle bus service between Airportfest, the Fort Worth Convention Center, Downtown Hotels, and Fossil Creek Hotels will run continuously beginning Wednesday, October 9. See inside in the aircraft parking section for a complete schedule.

Five VFR arrival routes have been established to accommodate the anticipated number of aircraft flying to the event. Arrival routes from the West/Southwest and South/Southeast/East are dependent upon whether Fort Worth Meacham (FTW) is using runways 16/17 or 34/35. PLEASE BE SURE TO REFERENCE THE PROPER ARRIVAL CHART DEPENDING ON WHAT RUNWAYS ARE IN USE.

Aircraft arriving from the North/Northwest/Northeast, (and possibly East using northside arrival) will have one arrival route (chart) regardless of runways in use. **Pilots are reminded to be extremely vigilant in scanning for other traffic due to the increased number of operations expected for the event.**

Parking at Fort Worth Meacham (FTW) should accommodate 1000+ aircraft. Be prepared to park on either hard or grass surface. In the event that parking becomes full at Fort Worth Meacham (FTW), a notice will be broadcast on the FTW ATIS alerting pilots to the condition. Please see the aircraft parking section for more detailed information.

FTW HOST FBOS



TEXAS JET

Fort Worth Meacham International Airport (FTW)



2013 AOPA AVIATION SUMMIT | DALLAS/FORT WORTH, TEXAS FROM 1100 UTC OCTOBER 8, 2013 TO 2200 UTC OCTOBER 14, 2013

Specific procedures contained with this NOTAM may be revised or unavailable at the time of the event. Users are encouraged to check NOTAMS frequently to verify they possess the most current revisions. This NOTAM does not supersede restrictions pertaining to the use of airspace contained in FDC NOTAMS.

In anticipation of an increased number of aircraft operating to and from the Dallas/Ft. Worth area in conjunction with the Summit, the following procedures will be used to enhance safety and minimize delays.

TRAFFIC MANAGEMENT

Traffic management initiatives will be utilized when arrival rates exceed airport capacity. Pilots should be prepared for potential holding, reroutes or EDCT's (Expect Departure Clearance Time) that may be issued for domestic IFR arrivals to the following airports:

Ft. Worth Meacham Airport (FTW)

Ft. Worth Alliance Airport (AFW)

Ft. Worth Spinks Airport (FWS)

Traffic management initiatives for this event are designed to provide equitable airspace access. To maintain program integrity and minimize delays, IFR airborne changes of destination to above listed airports will not be accepted within 200NM of destination, except for emergencies or capacity constraints at FTW. Duplicate flight plans to multiple destinations are subject to removal from the system.

IMPORTANT INFORMATION

Pilots are urged to review all applicable NOTAMS and arrival/departure procedures prior to conducting flight

in the Dallas/Ft. Worth area. IFR flight plans should be filed at least 6 hours prior to proposed departure time.

LOCAL TRAINING AND PRACTICE APPROACHES

Local traffic pattern and closed traffic training will be prohibited at FTW and possibly limited at AFW and FWS during the AOPA Summit. Practice approaches to airports within 30NM of FTW will be extremely limited and potentially unavailable due to the volume associated with the AOPA Summit.

CAUTIONS

DALLAS FT. WORTH CLASS B AIRSPACE

CLASS D AIRSPACE: AFW, FTW, DTO, FWS, TKI, ADS, RBD, GPM, GKY, and NFW

MILITARY OPERATIONS AT THE FT. WORTH NAVAL AIR STATION (NFW JRB)

TSA GLIDERPORT (TA11) 32-23-00.5110N / 097-00-51.0130W - Established in 1947, the club is located 15 minutes south of Midlothian, Texas, which is itself at the southern edge of the Dallas/Fort Worth Class B Airspace. The club operates from its own airfield and owns six single and four two-place sailplanes, plus four Pawnee tow-planes. TSA operates year round on most flyable Thursdays, Saturdays and Sundays. The club also operates on an unscheduled basis on other weekdays when the flying weather is really good.

SKYDIVE COWTOWN is the closest skydiving center to Ft. Worth and Denton, Texas. They operate 7 days a week. Drop location is located at: 33 09 28N 97 26 33W

MEACHAM INTERNATIONAL AIRPORT GENERAL INFORMATION

Restricted Operations: Local traffic pattern and closed traffic training will be prohibited at FTW and possibly limited at AFW and FWS during the AOPA Summit. Practice approaches to airports within 30NM of FTW will be extremely limited and potentially unavailable due to the volume associated with the AOPA Summit.

Parking Areas: All aircraft parking spaces are located in areas designated as non-movement areas for the duration of the AOPA Summit and as such are not controlled by ground control. **Pilots operating in these areas do so at their own risk.** When operating in non-movement areas, pilots are encouraged to be extra alert for taxiing aircraft, aircraft with engines running, and vehicle/pedestrian traffic. Ground support personnel will be assisting aircraft to/from parking areas and to run-up areas. For safety reasons high RPM engine running is prohibited outside designated run-up areas. Please review the parking map that will be given to you in the welcome packet you will receive after parking your aircraft. This will brief you on the correct taxi routes when departing.

Vehicular Traffic: Vehicles are not allowed on ramps except those belonging to airport operators and tenants, and those participating in AOPA Summit.

Van Transportation will be provided to/from aircraft parking areas. Due to heightened security precautions, all visitors are required to enter/exit the airport flight line through the AOPA hospitality tent located at Airport fest. Car rental and ground transportation pick-up/drop-off arrangements should be scheduled accordingly.

Pre-Flight Planning: For VFR flight following check in at the FAA table located inside the AOPA hospitality tent. **Please ensure that you have received a copy of the flight information and departure procedures and have thoroughly reviewed the temporary taxi and departure procedures prior to engine start.**

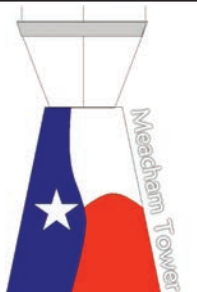
ENROUTE VFR FLIGHT FOLLOWING SERVICES

Enroute VFR Flight Following Services will be provided by Ft. Worth ARTCC or Waco Approach Control (ACT) on a workload permitting basis. Contact Ft. Worth ARTCC or Waco Approach Control (ACT) at least 100NM from FTW Airport. Refer to the chart below for appropriate frequency:

DIRECTION OF ARRIVAL	ATC FACILITY	FREQUENCY
NORTH	FT. WORTH ARTCC	124.75
NORTHEAST	FT. WORTH ARTCC	124.87
EAST	FT. WORTH ARTCC	132.85
SOUTHEAST	FT. WORTH ARTCC	135.25
SOUTH	FT. WORTH ARTCC OR WACO APPROACH CONTROL	133.3 127.65
SOUTHWEST	FT. WORTH ARTCC	127.15
WEST	FT. WORTH ARTCC	127.0
NORTHWEST	FT. WORTH ARTCC	127.95

VFR ARRIVALS TO FTW (FORT WORTH MEACHAM INTERNATIONAL AIRPORT)

TOWER	118.3 / 120.9
GROUND CONTROL	121.9
CLEARANCE DELIVERY	124.65
ATIS	120.7

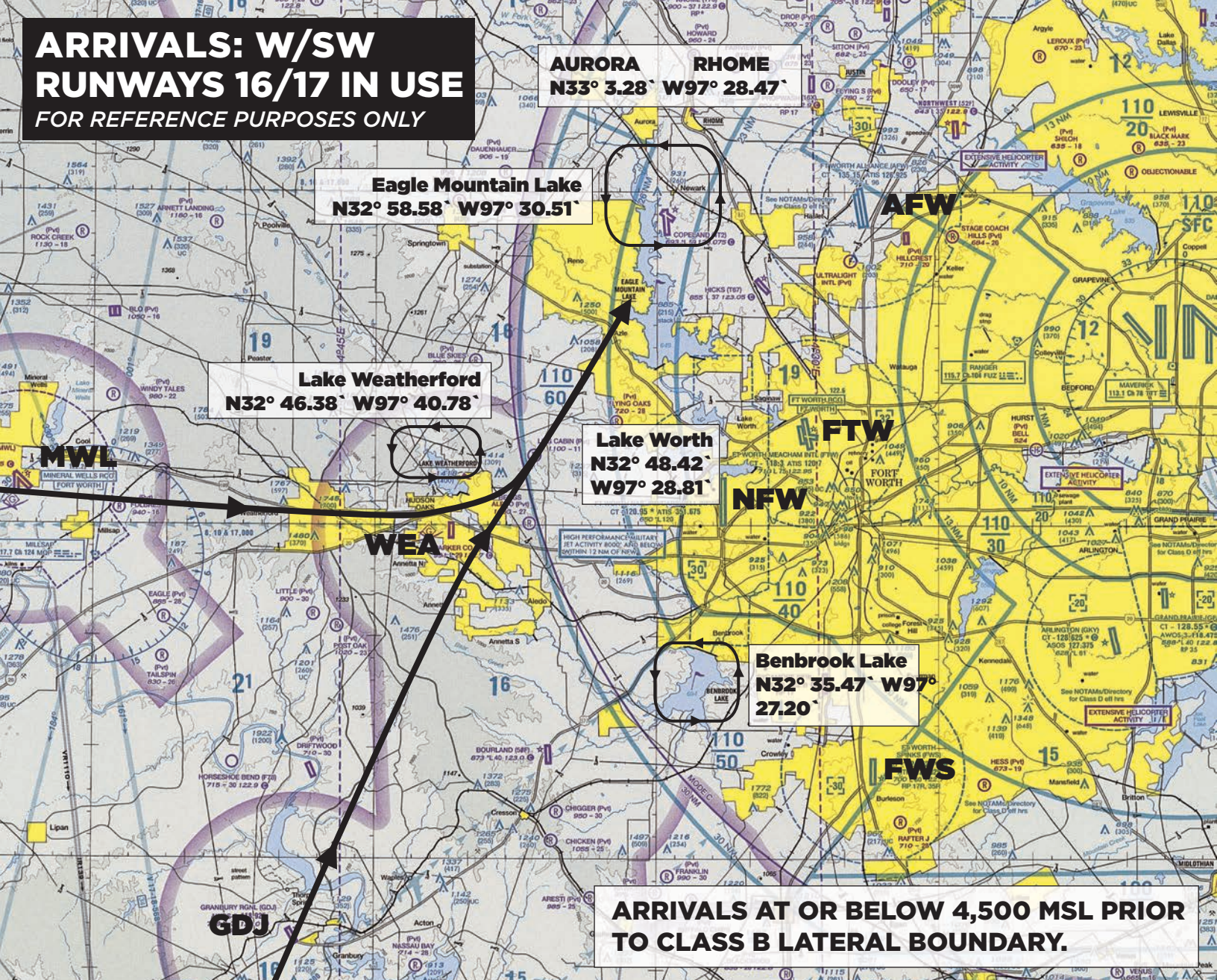


VFR ARRIVALS TO OTHER AIRPORTS

Arrivals to destinations other than FTW are expected to follow normal arrival procedures to those airports. For RADAR advisories & sequencing, contact Regional Approach Control:

DIRECTION ARRIVING FROM	ATC FACILITY	FREQUENCY
NORTH/NORTHEAST	DFW REGIONAL APPROACH	124.3
EAST/SOUTHEAST	DFW REGIONAL APPROACH	125.2
SOUTH/SOUTHWEST	DFW REGIONAL APPROACH	135.975
WEST/NORTHWEST	DFW REGIONAL APPROACH	118.1

**ARRIVALS: W/SW
RUNWAYS 16/17 IN USE
FOR REFERENCE PURPOSES ONLY**



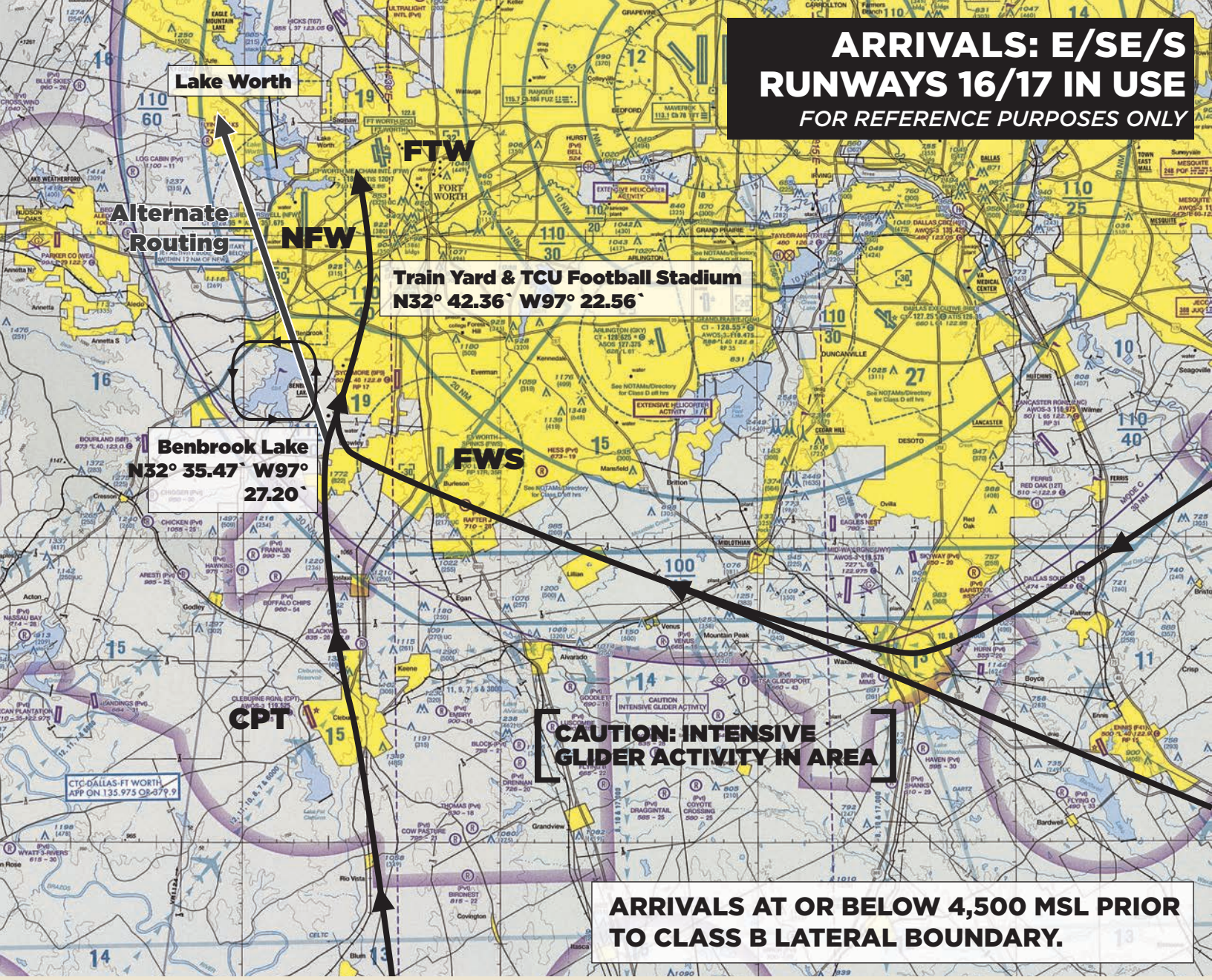
ARRIVING FROM THE WEST/SOUTHWEST; RUNWAYS 16/17 IN USE

Do not contact FTW Tower as your initial call. For flight following, contact Fort Worth ARTCC at least 100NM from Fort Worth Meacham (FTW) on frequency shown on the ENROUTE VFR FLIGHT FOLLOWING SERVICES CHART.

Proceed toward Parker County Airport (WEA). Remain clear of the lateral boundaries of the DFW Class B Airspace except as depicted or otherwise advised by ATC. Altitude must be at or below 4,500 feet MSL prior to DFW Class B lateral boundary. If not already in communication with ATC, contact Dallas/Fort Worth Approach on 125.8 prior to reaching Parker County Airport (WEA). Ensure you have the Fort Worth Meacham (FTW) ATIS prior to contacting Dallas/Fort Worth Approach. Do not proceed beyond Parker County Airport (WEA) unless in communication with Dallas/Fort Worth Approach. Expect to proceed northeast bound towards Eagle Mountain Lake near Copeland Airport (4T2). In the event traffic volume requires holding,

prepare to hold over Lake Weatherford at or below 4,500 feet MSL or the north shore of Eagle Mountain Lake at or below 3,000 feet MSL, left turns unless otherwise advised by ATC. When passing Parker County Airport/Lake Weatherford, begin descent to at or below 3,000 feet MSL for pattern entry into FTW. When instructed by Dallas/Fort Worth Approach (expect frequency change near Eagle Mountain Lake), contact Fort Worth Meacham (FTW) Tower on 118.3 and expect further instructions. DO NOT CONTACT Fort Worth Meacham (FTW) Tower until instructed to do so. Primary landing from this direction will be runways 16/17. **EXERCISE EXTREME CAUTION AS YOU APPROACH EAGLE MOUNTAIN LAKE AND AVOID THE FORT WORTH NAVAL AIR STATION (NFW) CLASS D AIRSPACE. EXPECT MILITARY AIRCRAFT TO BE OPERATING IN THIS AREA. DO NOT CONFUSE THE FORT WORTH NAVAL AIR STATION (NFW) WITH FORT WORTH MEACHAM AIRPORT (FTW).**

ARRIVALS: E/SE/S
RUNWAYS 16/17 IN USE
FOR REFERENCE PURPOSES ONLY



ARRIVING FROM THE EAST/SOUTHEAST/SOUTH; RUNWAYS 16/17 IN USE

Do not contact FTW Tower as your initial call. For flight following, contact Fort Worth ARTCC at least 100NM from Fort Worth Meacham (FTW) on frequency shown on the **ENROUTE VFR FLIGHT FOLLOWING SERVICES CHART.**

Proceed toward the southeastern shore of Benbrook Lake. Altitude must be at or below 4,500 feet MSL prior to reaching the DFW Class B lateral boundary; however, remain above 3,000 feet MSL until clear of NFW & FWS Class D Airspace unless otherwise advised by ATC. If not already in communication with ATC contact Dallas/Fort Worth Approach on 135.975 prior to reaching Benbrook Lake. Ensure you have the Fort Worth Meacham (FTW) ATIS prior to contacting Dallas/Fort Worth Approach. Do not proceed beyond Benbrook Lake unless in communication with Dallas/Fort Worth Approach. Expect to proceed northeast bound toward Texas Christian University (TCU) football stadium, then north bound for pattern entry to runway 17/35. When instructed by Dallas/Fort Worth Approach

(expect frequency change by Benbrook Lake), contact Fort Worth Meacham (FTW) Tower on 120.9 and expect further instructions. **DO NOT CONTACT** Fort Worth Meacham (FTW) Tower until instructed to do so. In the event traffic volume requires holding, prepare to hold over Benbrook Lake at or below 4,500 feet MSL, left turns unless otherwise advised by ATC. (Alternate routing as shown towards Lake Worth may be assigned due to traffic volume.) If instructed by ATC to fly the alternate route west of Fort Worth Naval Air Station (NFW) begin descent to at or below 3,000 feet MSL or as instructed by ATC after passing the north shores of Lake Worth. Primary landing from this direction will be runways 16/17. **EXERCISE EXTREME CAUTION AS YOU APPROACH EAGLE MOUNTAIN LAKE AND AVOID THE FORT WORTH NAVAL AIR STATION (NFW) CLASS D AIRSPACE. EXPECT MILITARY AIRCRAFT TO BE OPERATING IN THIS AREA. DO NOT CONFUSE THE FORT WORTH NAVAL AIR STATION (NFW) WITH FORT WORTH MEACHAM AIRPORT (FTW).**

**ARRIVALS: E/SE/S
RUNWAYS 34/35 IN USE
FOR REFERENCE PURPOSES ONLY**

**Lake Worth
N32° 48.42' W97° 28.81'**

FTW

NFW

**Train Yard & TCU Football Stadium
N32° 42.36' W97° 22.56'**

**Benbrook Lake
N32° 35.47' W97° 27.20'**

FWS

CPT

**CAUTION: INTENSIVE
GLIDER ACTIVITY IN AREA**

**ARRIVALS AT OR BELOW 4,500 MSL PRIOR
TO CLASS B LATERAL BOUNDARY.**

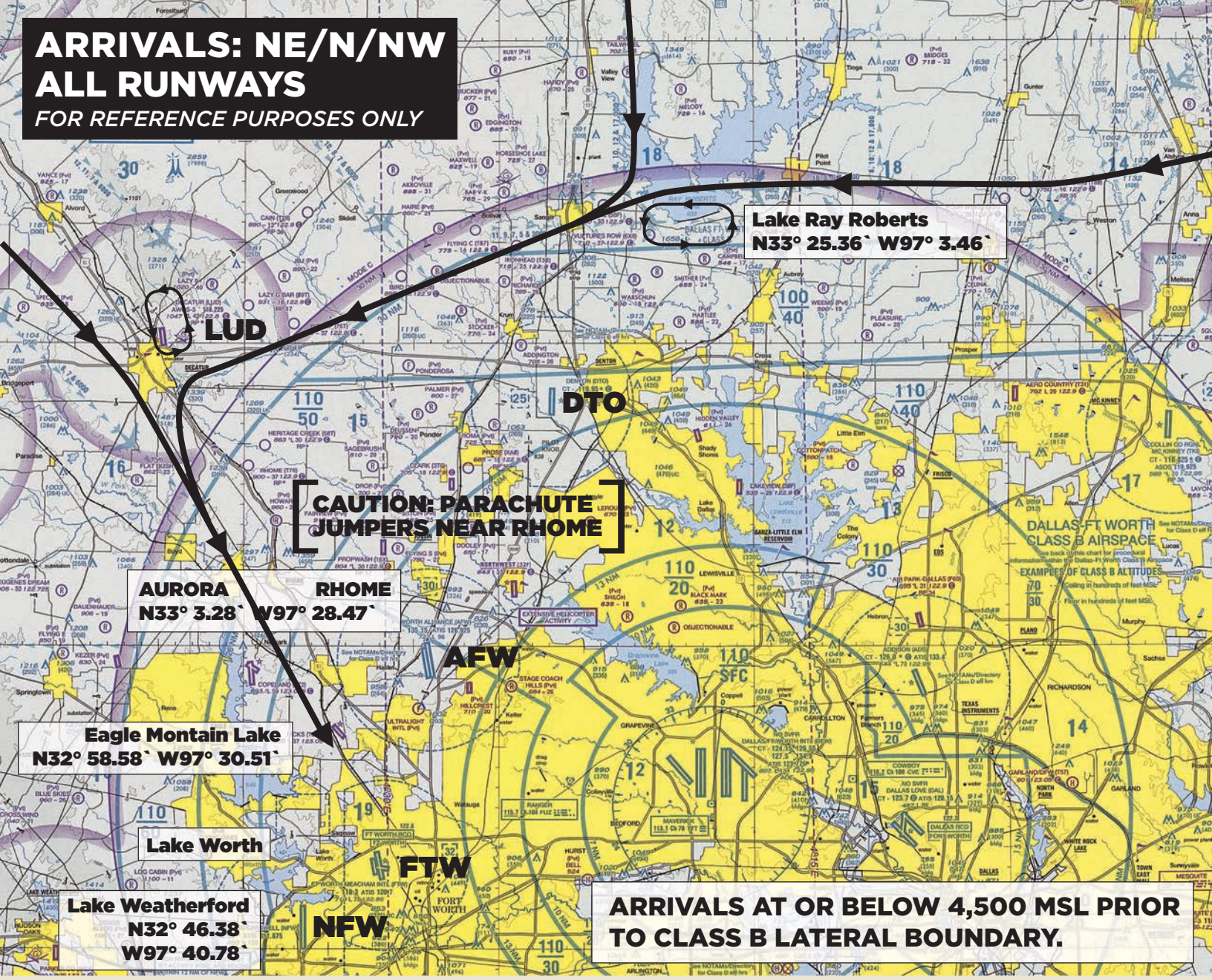
ARRIVING FROM THE EAST/SOUTHEAST/SOUTH; RUNWAYS 34/35 IN USE

Do not contact FTW Tower as your initial call. For flight following, contact Fort Worth ARTCC at least 100NM from Fort Worth Meacham (FTW) on frequency shown on the **ENROUTE VFR FLIGHT FOLLOWING SERVICES CHART**.

Proceed toward Fort Worth Spinks Airport (FWS). Altitude must be at or below 4,500 feet MSL prior to reaching the DFW Class B lateral boundary; however, remain above 3,000 feet MSL until clear of Fort Worth Spinks Airport (FWS) Class D Airspace unless otherwise advised by ATC. If not already in communication with ATC contact Dallas/Fort Worth Approach on 135.975 prior to reaching Fort Worth Spinks Airport (FWS). Ensure you have the Fort Worth Meacham (FTW) ATIS prior to contacting Dallas/Fort Worth Approach.

Do not proceed beyond Fort Worth Spinks Airport (FWS) unless in communication with Dallas/Fort Worth Approach. Expect to proceed north toward Fort Worth Meacham (FTW) for runways 34/35. When instructed by Dallas/Fort Worth Approach (expect frequency change after passing Fort Worth Spinks (FWS), contact Fort Worth Meacham (FTW) Tower until instructed to do so. In the event traffic volume requires holding, prepare to hold over Benbrook Lake at or below 4,500 feet MSL, left turns unless otherwise advised by ATC. **EXERCISE EXTREME CAUTION AND BE ALERT FOR CONVERGING TRAFFIC. DO NOT CONFUSE THE FORT WORTH NAVAL AIR STATION (NFW) WITH FORT WORTH MEACHAM AIRPORT (FTW).**

**ARRIVALS: NE/N/NW
ALL RUNWAYS
FOR REFERENCE PURPOSES ONLY**



ARRIVING FROM THE NORTHEAST/NORTH/NORTHWEST (OPTIONAL FOR EAST)

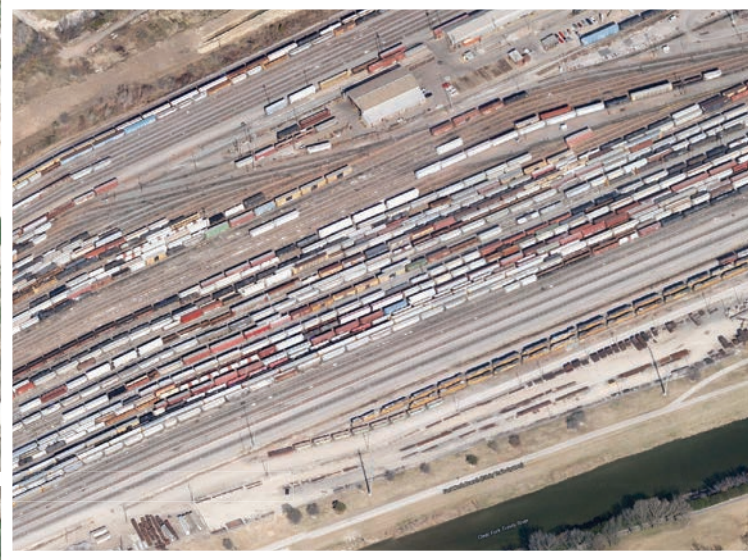
Do not contact FTW Tower as your initial call. For flight following, contact Fort Worth ARTCC at least 100NM from Fort Worth Meacham (FTW) on frequency shown on the **ENROUTE VFR FLIGHT FOLLOWING SERVICES CHART**.

Proceed toward Lake Ray Roberts if arriving from the North, Northeast or East. If arriving from the Northwest, proceed toward Decatur Airport (LUD). Altitude must be at or below 4,500 feet MSL prior to reaching the DFW Class B lateral boundary unless otherwise advised by ATC. If not already in communication with ATC, contact Dallas/Fort Worth Approach on 118.1 prior to reaching Lake Ray Roberts if arriving from the North, Northeast, or East. Contact Approach on 118.1 prior to reaching Decatur Airport (LUD) if arriving from the Northwest. Ensure you have the Fort Worth Meacham (FTW) ATIS prior to contacting Dallas/Fort

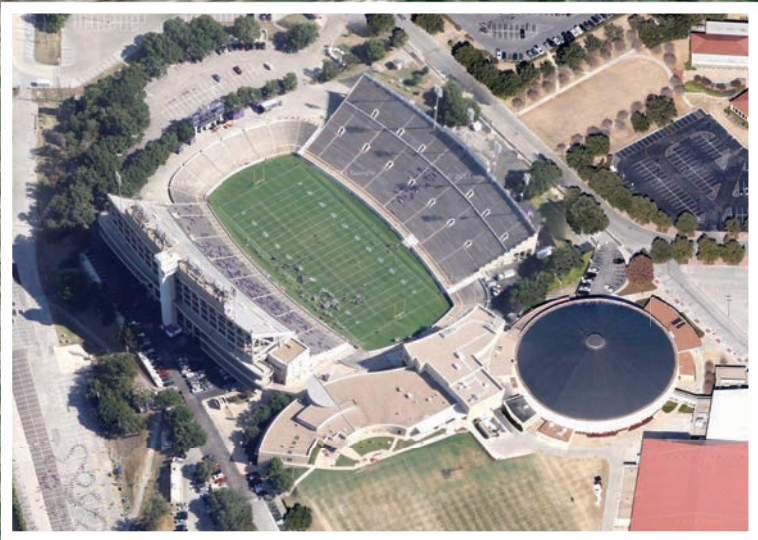
Worth Approach. Do not proceed beyond Lake Ray Roberts or Decatur Airport (LUD) unless in communication with Dallas/Fort Worth Approach. Expect to fly the arrival route as depicted on the chart below towards Lake Ray Roberts or Decatur Airport (LUD) then southeast bound towards the cities of Rhome and Aurora. When passing Lake Ray Roberts or Decatur, begin descent to at or below 3,000 feet MSL unless otherwise advised by ATC. When instructed by Dallas/Fort Worth Approach, (expect frequency change by Rhome/Aurora) contact Fort Worth Meacham (FTW) Tower on 118.3 if 16/17 are in use or 120.9 if runways 34/35 are in use. **DO NOT CONTACT** Fort Worth Meacham (FTW) Tower until instructed to do so. In the event traffic volume requires holding, prepare to hold over the south shore of Lake Ray Roberts or northeast of the Decatur Airport (LUD) at or below 4,500 feet MSL, left turns unless otherwise advised by ATC.

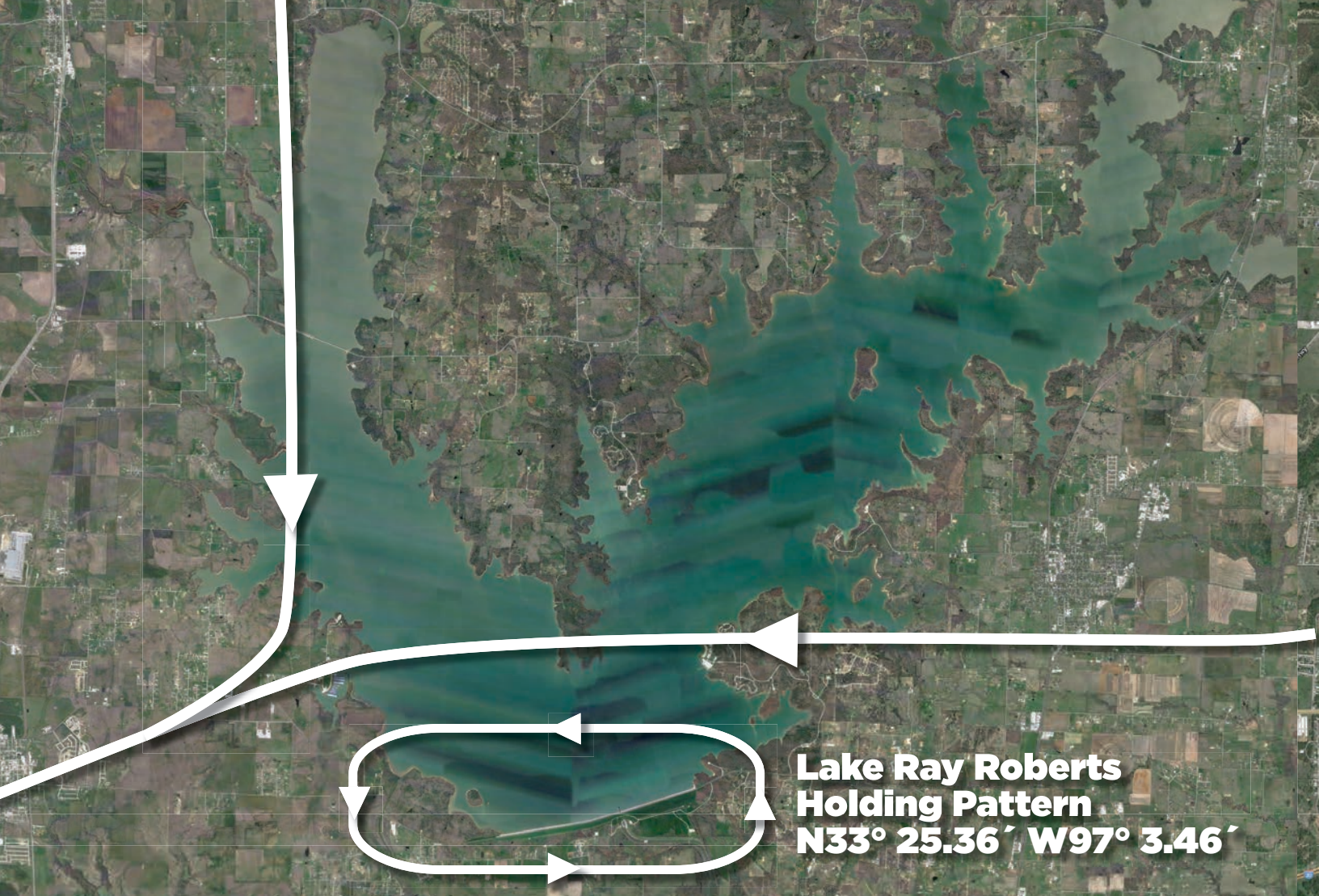
Fort Worth Meacham International Airport (FTW)

Rail Yard



TCU Football Stadium



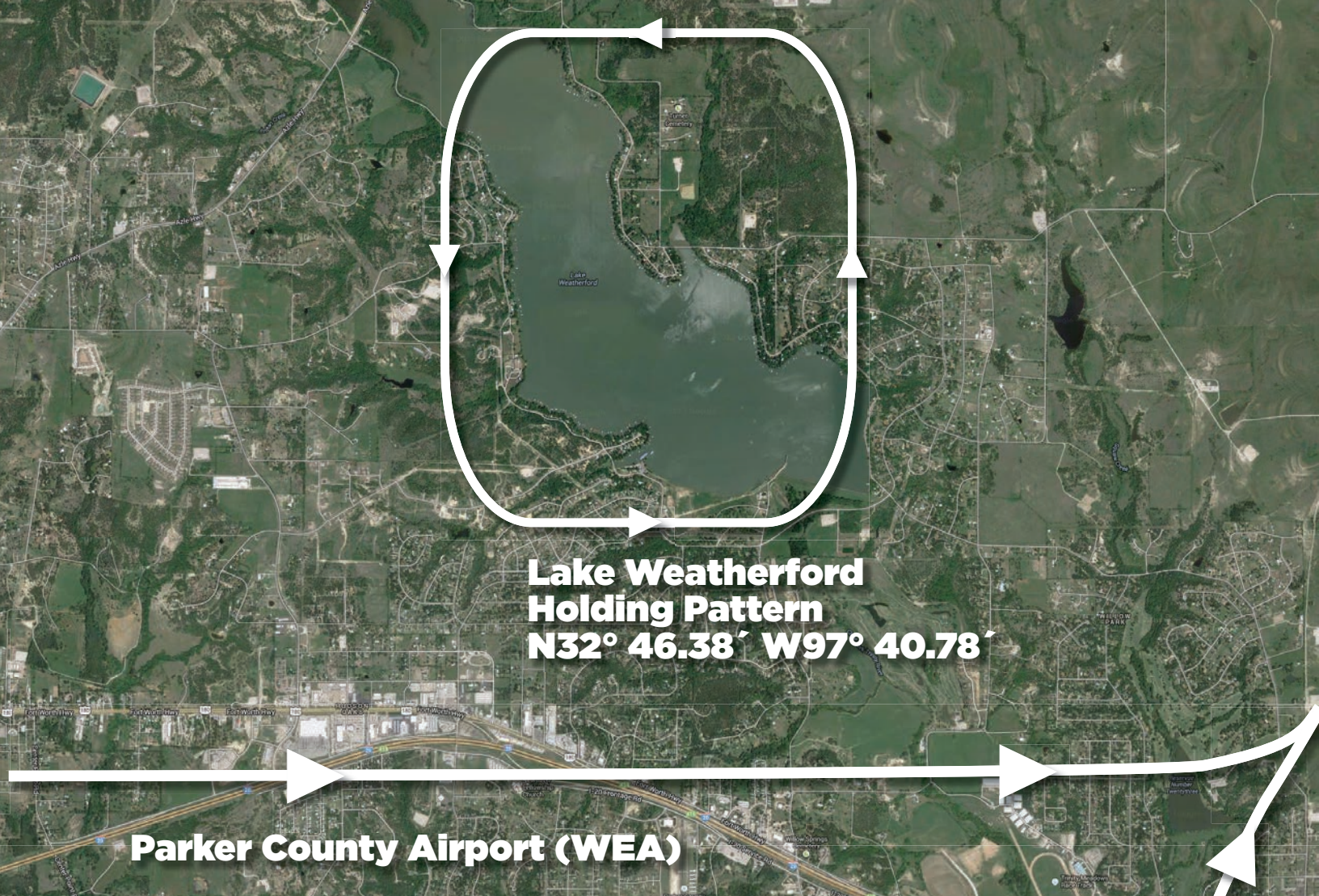


**Lake Ray Roberts
Holding Pattern
N33° 25.36' W97° 3.46'**



**Lake Worth
N32° 48.42' W97° 28.81'**

**Fort Worth Naval
Air Station**

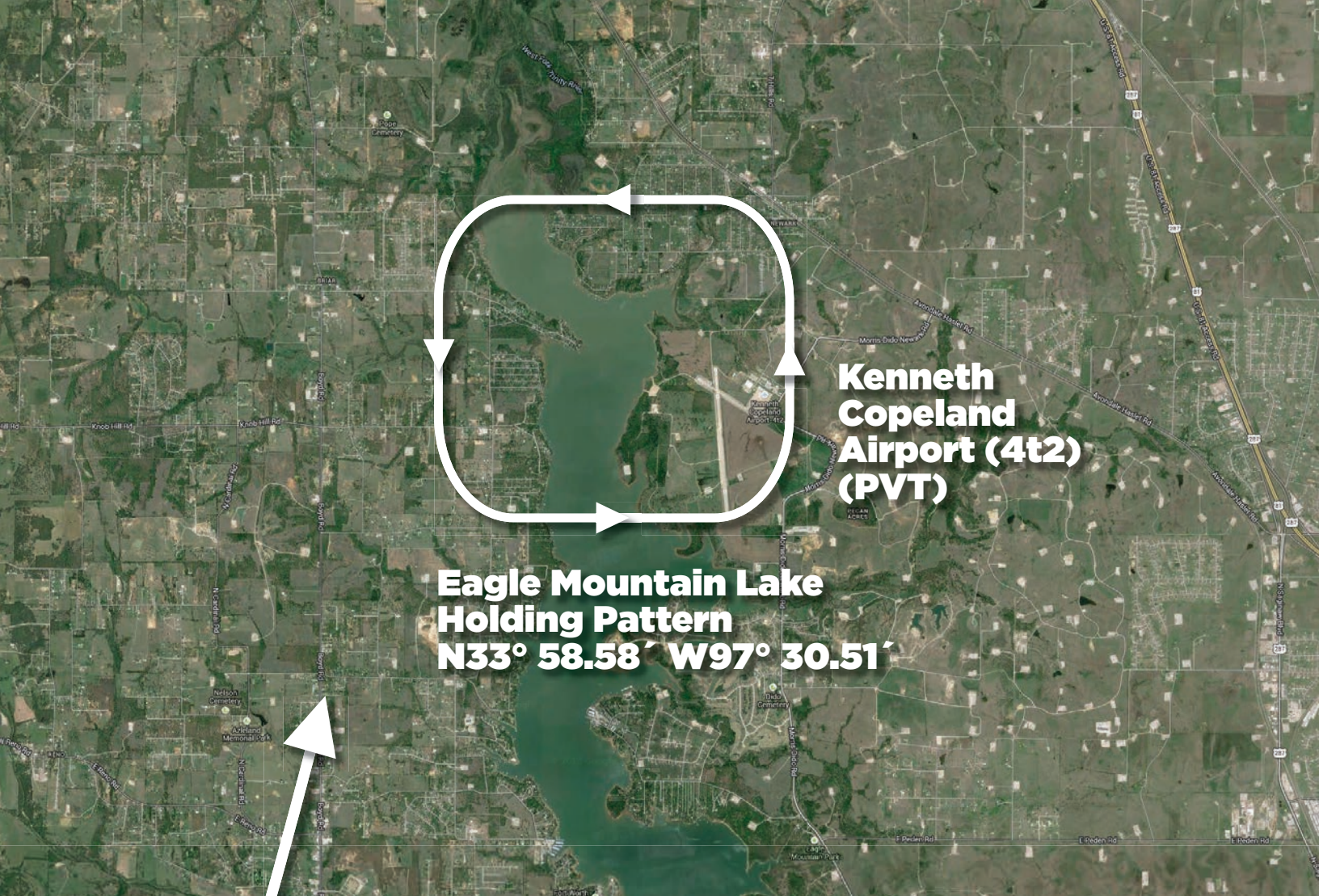


**Lake Weatherford
Holding Pattern
N32° 46.38' W97° 40.78'**

Parker County Airport (WEA)



**Benbrook Lake
Holding Pattern
N32° 35.47' W97° 27.20'**



MEACHAM AIRPORT AFTER LANDING/ PARKING PROCEDURES

Exit the runway as quickly and safely as practical. Do not stop on the runway unless absolutely necessary. ATC will not be providing taxi instructions in non-movement areas or closed taxiways. Pilots should follow the direction of flagmen and marshalls to one of the six color coded parking areas at Fort Worth Meacham (FTW). Pilots will not be able to choose where to park. Rates and fuel prices have been standardized for the event regardless of which parking area you are in or which Host FBO services your aircraft.

If landing on runway 16/34 plan to taxi via Alpha then left/right turn onto runway 9/27, where you will be directed by flagmen to your designated parking area. If landing on runway 17/35 plan to taxi via Bravo then onto taxiway Charlie. **EXPECT TO HOLD SHORT OF RUNWAY 16/34 AND READ BACK ALL HOLD SHORT INSTRUCTIONS WITH N-NUMBER.** Once you have crossed 16/34, turn left on Alpha and right on runway 9/27. Follow the flagmen to your designated parking area. If parking on the east side of the airport becomes saturated, parking will continue on the west side. If landing runway 16/34, plan to exit the runway onto taxiway Charlie west bound where you will be directed by flagmen to your designated parking area.

After shutting down, please stay with your aircraft. Safety and security on the airport are paramount. A van provided by one of the Host FBOs will pick you up and transport you to the hospitality tent located at Airportfest. The tent will be staffed by Host FBO personnel, Fort Worth Convention and Visitor Bureau representatives, Meacham Tower controllers, and AOPA volunteers.

Pilots should bring their own chocks, tiedowns, and ground anchors and be prepared to park on either a hard or grass surface. Also, please bring your tow bar as well.

AOPA SUMMIT HOST FBOs:

AOPA Summit Host FBOs at Fort Worth Meacham International Airport are Texas Jet and American Aero. We thank them for their participation in this year's event. The following parking fee information has been provided and applies to all AOPA Summit remote parking areas.

\$10: If dropping off/picking up or visiting only for the day (*All Aircraft*)

\$30: If parking overnight and/or staying for the duration of the event (*All Aircraft*)

If you are planning to stay beyond Sunday and your aircraft is parked in a remote parking area you must make arrangements with one of the Host FBOs to move your aircraft to their ramp by 5:00 PM Sunday. Please see the Host FBO contact numbers below.

Fuel: 100LL will be discounted during Summit

Airport Fee: None

Parking at the FBO's main ramp is limited and is generally reserved for turbine powered aircraft. Prior reservations are required. Please contact the FBOs directly for more information.



American Aero: 817.625.2366

Hours of operation: 6AM-10PM

Hospitality tent hours: Wednesday—
11AM-6PM, Thursday-Saturday—7AM-6PM,
Sunday—7AM-12 Noon

After-hours contact: 817.625.2366



Texas Jet: 817.625.0192

Hours of operation: 24 hours

Hospitality tent hours: Wednesday—
11AM-6PM, Thursday-Saturday—7AM-6PM,
Sunday—7AM-12 Noon

After hours contact: 817.624.8438



Sandpiper Aviation: 817.625.5531

Hours of operation: 7AM-7PM

After-hours contact: 817.625.5531

Rental Car Availability:

Enterprise: 817.626.6399

Hertz 817.332.5205

AFTER-HOURS DEPARTURES

If you will be departing after normal operating hours please contact the after-hours phone number of the FBO that serviced your aircraft for transportation to your parking area. You will need to go to the FBO's main lobby, not the Hospitality tent at Airportfest. This is for after-hours departures only.

FREE SHUTTLE BUS SERVICE

Free shuttle bus service will be available between Airportfest at Fort Worth Meacham International Airport and the Fort Worth Convention Center beginning Wednesday October 9. Free shuttle bus service will also be available to downtown hotels and Fossil Creek hotels from Airportfest and the Fort Worth Convention Center. The complete schedule is listed on the next page.

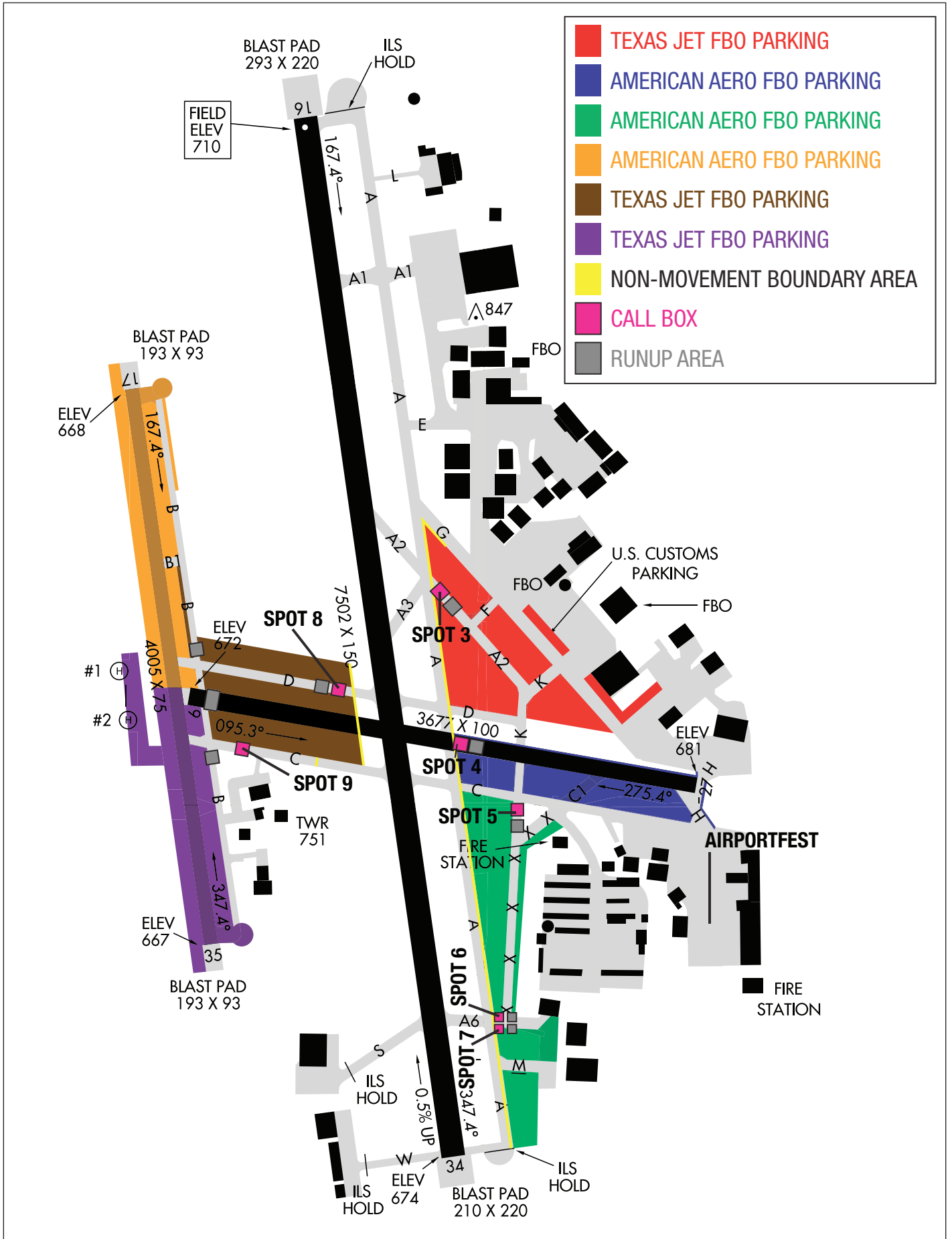
	MEACHAM TO CONVENTION CENTER (CONTINUOUS LOOP)	MEACHAM TO DOWNTOWN HOTELS* (CONTINUOUS LOOP; NO STOP AT CONVENTION CENTER)
ROUTE 1		
Wednesday, October 9	12PM(Noon)–5:30PM	5:30PM–7PM
Thursday, October 10	7AM–5:30PM	5:30PM–6:30PM
Friday, October 11	7AM–5:30PM	5:30PM–6:30PM
Saturday, October 12	7AM–5PM	
Sunday, October 13	7AM–11AM	
	MEACHAM TO CONVENTION CENTER TO FOSSIL CREEK HOTELS** (CONTINUOUS LOOP)	MEACHAM TO FOSSIL CREEK HOTELS** (CONTINUOUS LOOP; NO STOP AT CONVENTION CENTER)
ROUTE 2		
Wednesday, October 9	12PM(Noon)–5:30PM	5:30PM–7PM
Thursday, October 10	7AM–5:30PM	5:30PM–6:30PM
Friday, October 11	7AM–5:30PM	5:30PM–6:30PM
Saturday, October 12	7AM–5PM	
Sunday, October 13	7AM–11AM	
SPECIAL EVENTS	TO EVENT	FROM EVENT
Friday, October 11 <i>Chowdown to Cowtown at Stockyard Station</i>	5:30PM <i>Several Runs</i>	Conclusion of Rodeo <i>Several Runs</i>
Saturday, October 12 <i>Pilots, Planes, & Pancakes at Airportfest</i>	Please See Route 1 & 2 Above	Please See Route 1 & 2 Above
Saturday, October 12 <i>Hangar Dance at The Vintage Flying Museum</i>	5PM <i>Several Runs</i>	8PM <i>Several Runs</i>

***AOPA Downtown Hotels Include:** Omni Fort Worth, Courtyard Blackstone, Embassy Suites, Hilton Fort Worth, Holiday Inn Express Downtown, Park Central Hotel, Sheraton Fort Worth, Towneplace Suites, and Worthington Renaissance

****AOPA Fossil Creek Hotels Include:** Courtyard Fossil Creek, Fairfield Inn Fossil Creek, and Holiday Inn North

For FREE transportation around Downtown Fort Worth, look no further than Molly the Trolley! Starting at 7 a.m., you can hop on and off Molly the Trolley to access the Convention Center, Restaurants, and Shopping. For more information, please visit mollythetrolley.com/.

PARKING AREAS:



SIGNAGE:

**RED
PARKING**



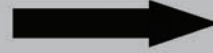

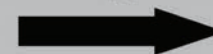
**PURPLE
PARKING**

**BLUE
PARKING**

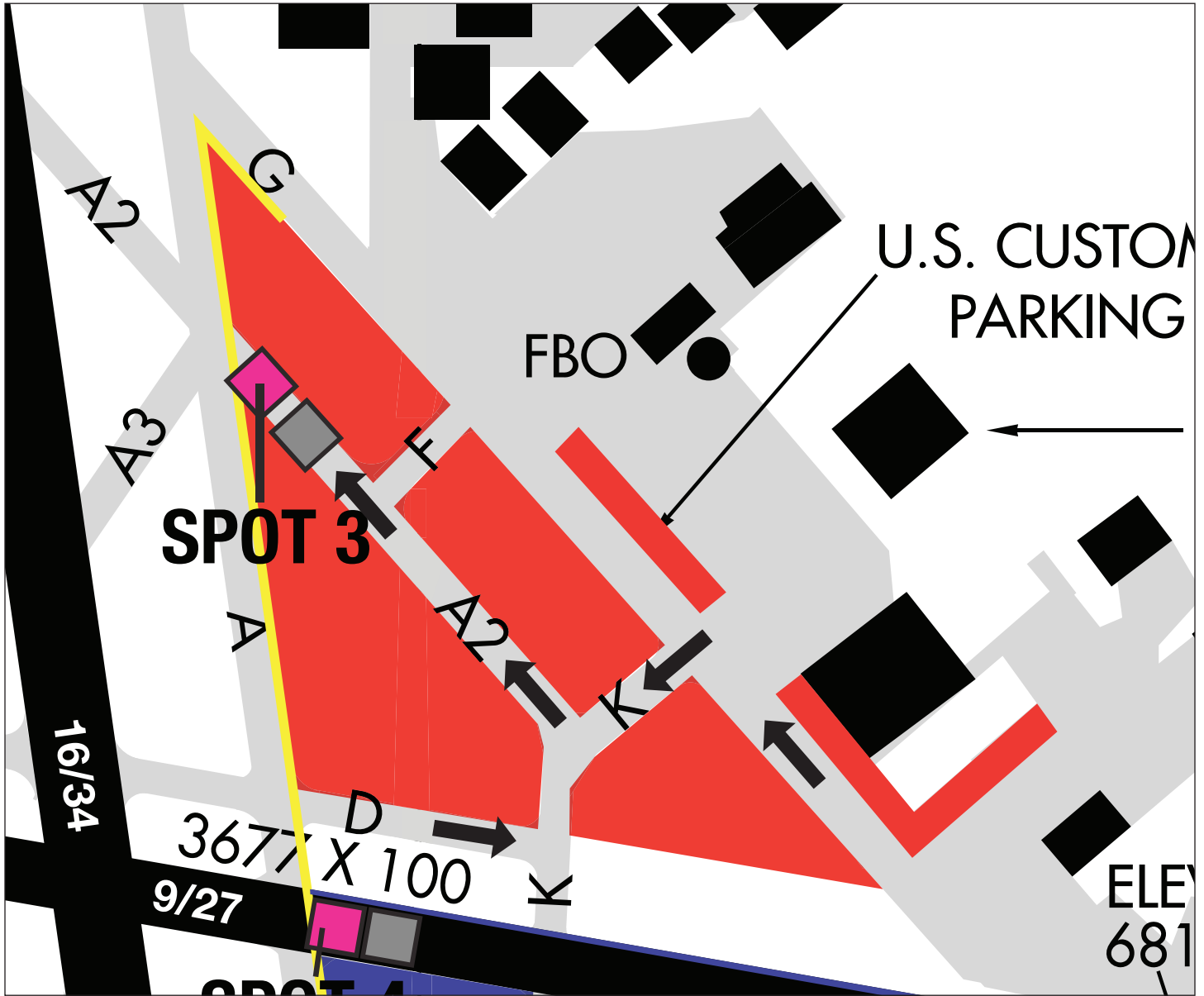
**BROWN
PARKING**

**GREEN
PARKING**

**ORANGE
PARKING**

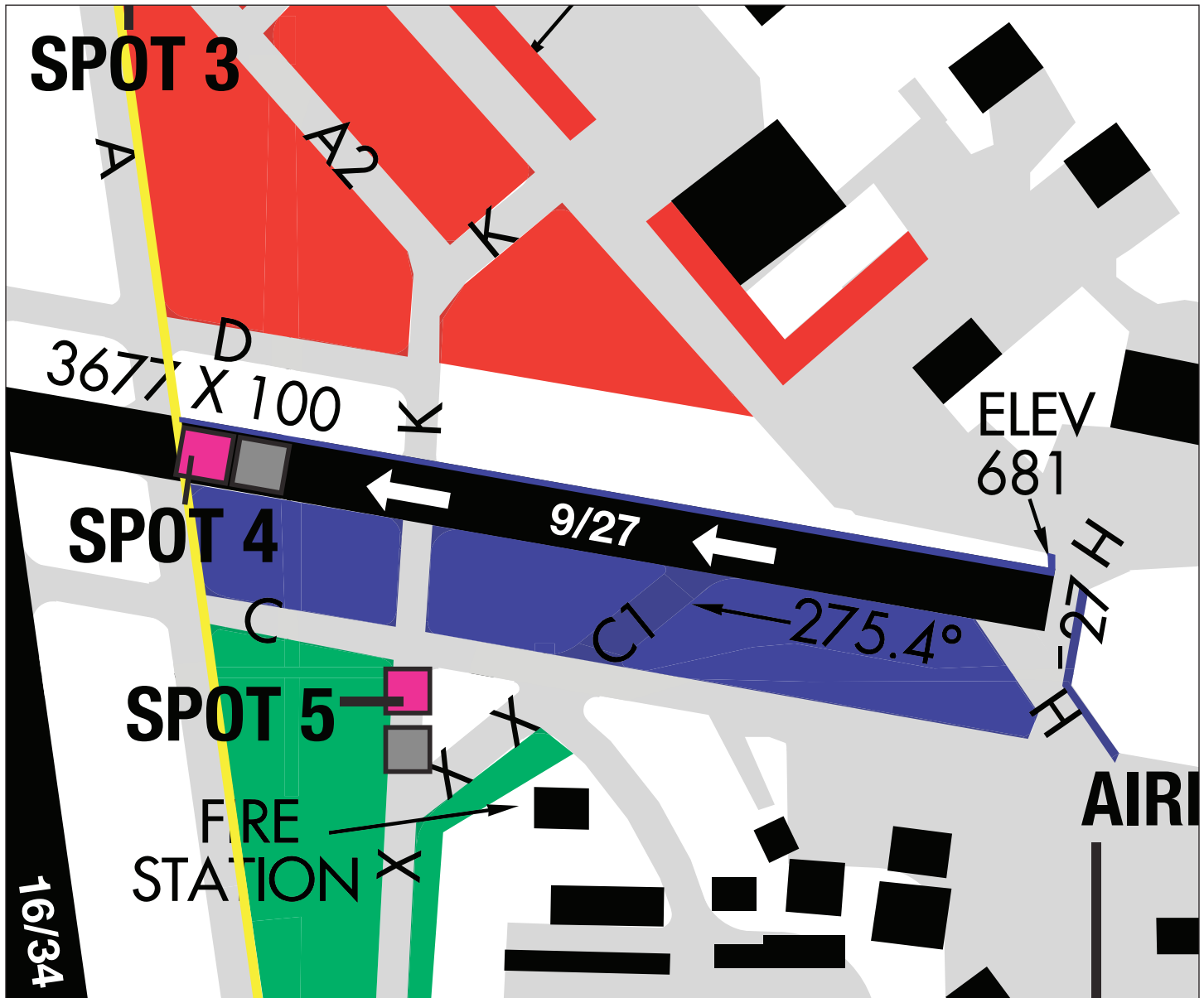
MONITOR GROUND CONTROL ON 121.9 WHEN NUMBER ONE HERE 	DEPARTING RUNWAY 34  4,717 FT REMAINING	DEPARTING RUNWAY 16  3,366 FT REMAINING	MONITOR TOWER 118.3
	DEPARTING RUNWAY 34  4,136 FT REMAINING	DEPARTING RUNWAY 16  2,785 FT REMAINING	YOU ARE AT SPOT 3

RUNUP CALL SPOTS | RED PARKING - HOST FBO: TEXAS JET

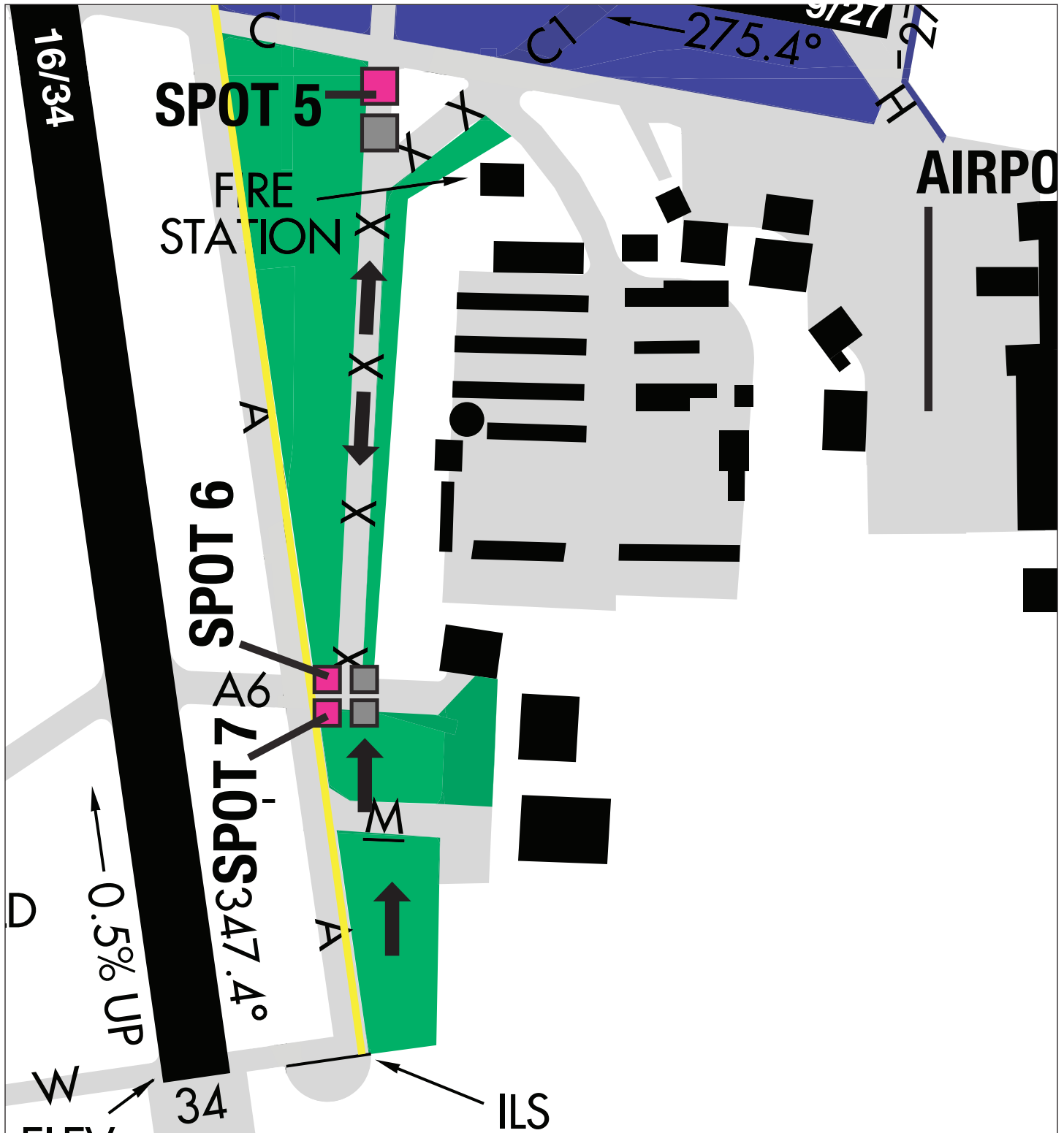


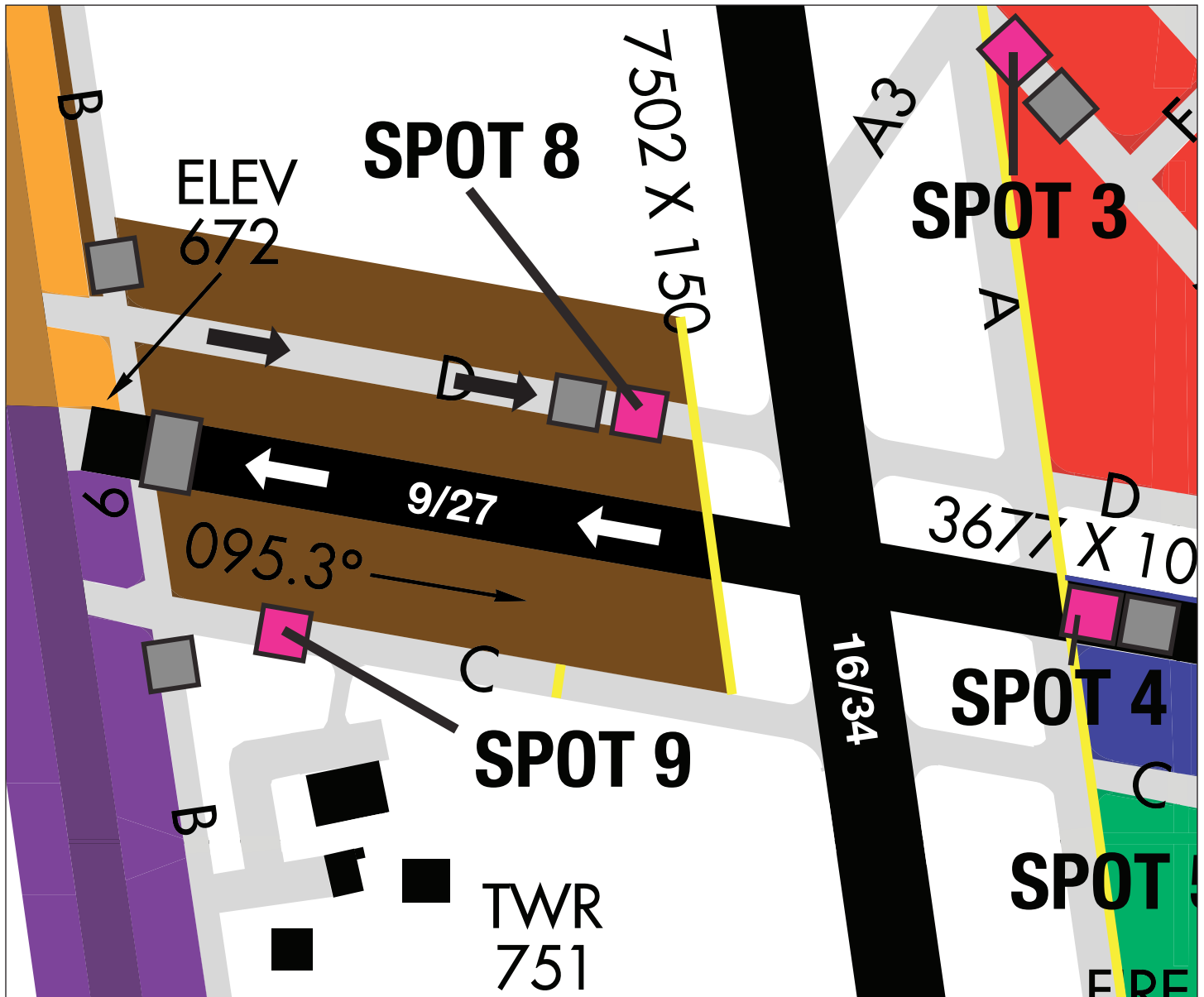
TEXAS JET

RUNUP CALL SPOTS | BLUE PARKING - HOST FBO: AMERICAN AERO

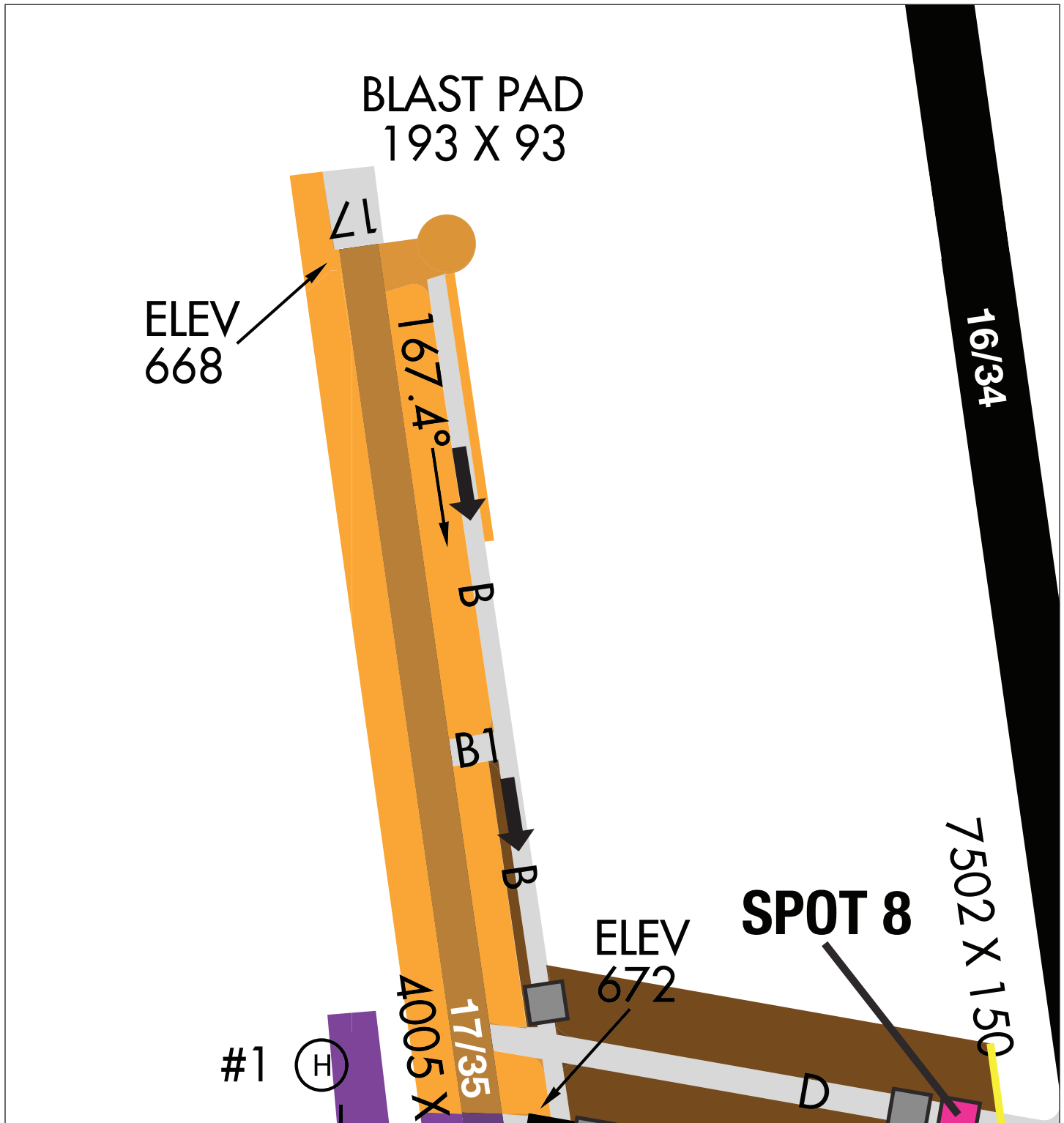


RUNUP CALL SPOTS | GREEN PARKING - HOST FBO: AMERICAN AERO



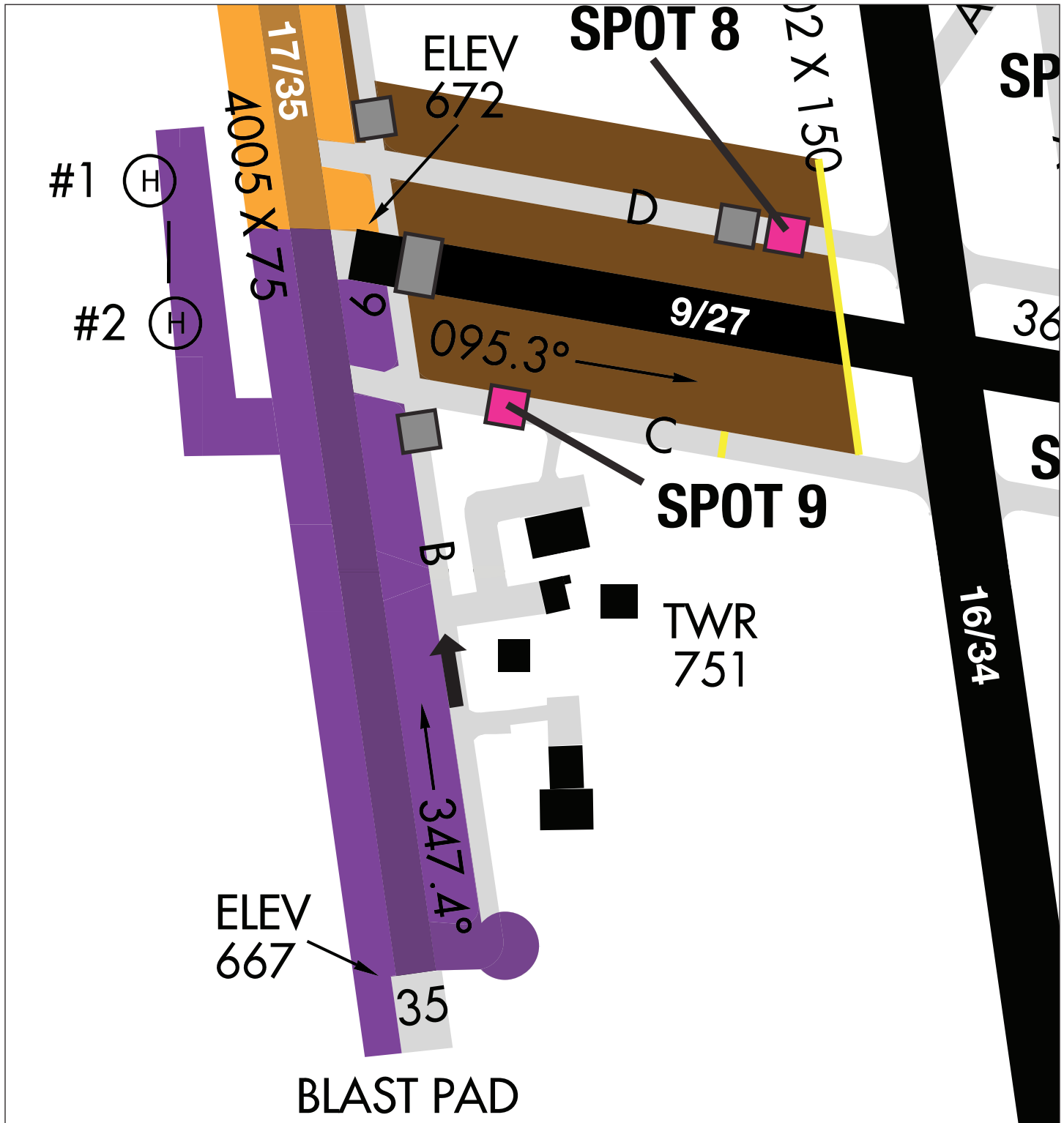


TEXAS JET



 CALL BOX  RUNUP AREA





 CALL BOX  RUNUP AREA



TEXAS JET

OTHER AREA AIRPORTS

There are several general aviation public-use airports that are within a 30 minute drive to Fort Worth Meacham Airport. You might elect to use one of these airports especially in the event that Fort Worth Meacham aircraft parking reaches capacity.

Keep in mind though, if you use an airport other than Fort Worth Meacham, AOPA-managed infrastructure and services, including ground transportation are not provided. Rental cars are available at many of these airports. Please contact the airport directly for more information.

FORT WORTH ALLIANCE (KAFW) is located 10 nautical miles northeast of Fort Worth Meacham Airport and is approximately a 20 minute drive by car to FTW. Fort Worth Alliance has two hard surface parallel runways, 16L/34R which is 9600X150 and 16R/34L which is 8220X150. The airspace is Class D and the control tower is in service continuously. Caution: Dallas/Fort Worth Class B. Rental cars are available through Enterprise at 866.315.9155.

FORT WORTH SPINKS (KFWS) is located 15 nautical miles southeast of Fort Worth Meacham Airport and is approximately a 30 minute drive by car to FTW. Fort Worth Spinks has two parallel runways, 17R/35L which is asphalt and 6002X100 and 17L/35R which is grass and 4000X60. The airspace is Class D from 1400Z-0300Z. Other times Class G. Caution: Dallas/Fort Worth Class B. Rental cars are available through Enterprise at 866.315.9155.

PARKER COUNTY AIRPORT (KWEA) is located 17 nautical southwest of Fort Worth Meacham Airport and is approximately a 30 minute drive by car to FTW. Parker County Airport has one hard surface runway 17/35 which is 2892X40. The airspace is Class G. Caution: Dallas/Fort Worth Class B. Rental cars are available through Enterprise at 817.598.1278

SYCAMORE STRIP (9F9) is located 11 nautical miles south of Fort Worth Meacham Airport and is approximately a 30 minute drive by car to FTW. Sycamore Strip has one hard surface runway 17/35 which is 3375X30. The airspace is Class G. Caution: Dallas/Fort Worth Class B. Rental cars are available through Enterprise at 866.315.9155.

HICKS AIRFIELD (T67) is located 6 nautical miles northwest of Fort Worth Meacham Airport and is approximately a 20 minute drive by car to FTW. Hicks Airfield has one hard surface runway 14/32 which is 3740X60. The airspace is Class G. Caution: Dallas/Fort Worth Class B. Rental cars are available through Enterprise at 866.315.9155.

CLEBURNE REGIONAL (KCPT) is located 28 miles southwest of Fort Worth Meacham Airport and is approximately a 50 minute drive by car to FTW. Cleburne Regional has one hard surface runway 15/33 which is 5697X100. The airspace is Class G. Caution: Dallas/Fort Worth Class B. Rental cars are available through Enterprise at 866.315.9155.

Please see the AOPA Airport Directory for more detailed information.

2013 AOPA AVIATION SUMMIT | DALLAS/FORT WORTH, TEXAS FROM 1100 UTC OCTOBER 8, 2013 TO 2200 UTC OCTOBER 14, 2013

MEACHAM AIRPORT DEPARTURE PROCEDURES

ALL IFR DEPARTURES WILL FOLLOW NORMAL PROCEDURES AND OBTAIN THEIR CLEARANCE THROUGH CLEARANCE DELIVERY 124.65.

Prior to Start-up - All Summit departures requesting VFR Flight Following should complete a "Request for VFR Flight Following" form and submit it to Meacham Tower personnel at the hospitality tent. A transponder code will be issued at that time. To expedite your departure, it is preferred that you submit the "Request for VFR Flight Following Form" upon arrival and specify your expected day of departure. VFR departures who DO NOT want flight following must advise their direction of flight with Ground Control on initial call.

ONCE AIRBORNE, REQUESTS FOR FLIGHT FOLLOWING WILL NOT BE APPROVED WHILE IN APPROACH CONTROL AIRSPACE.

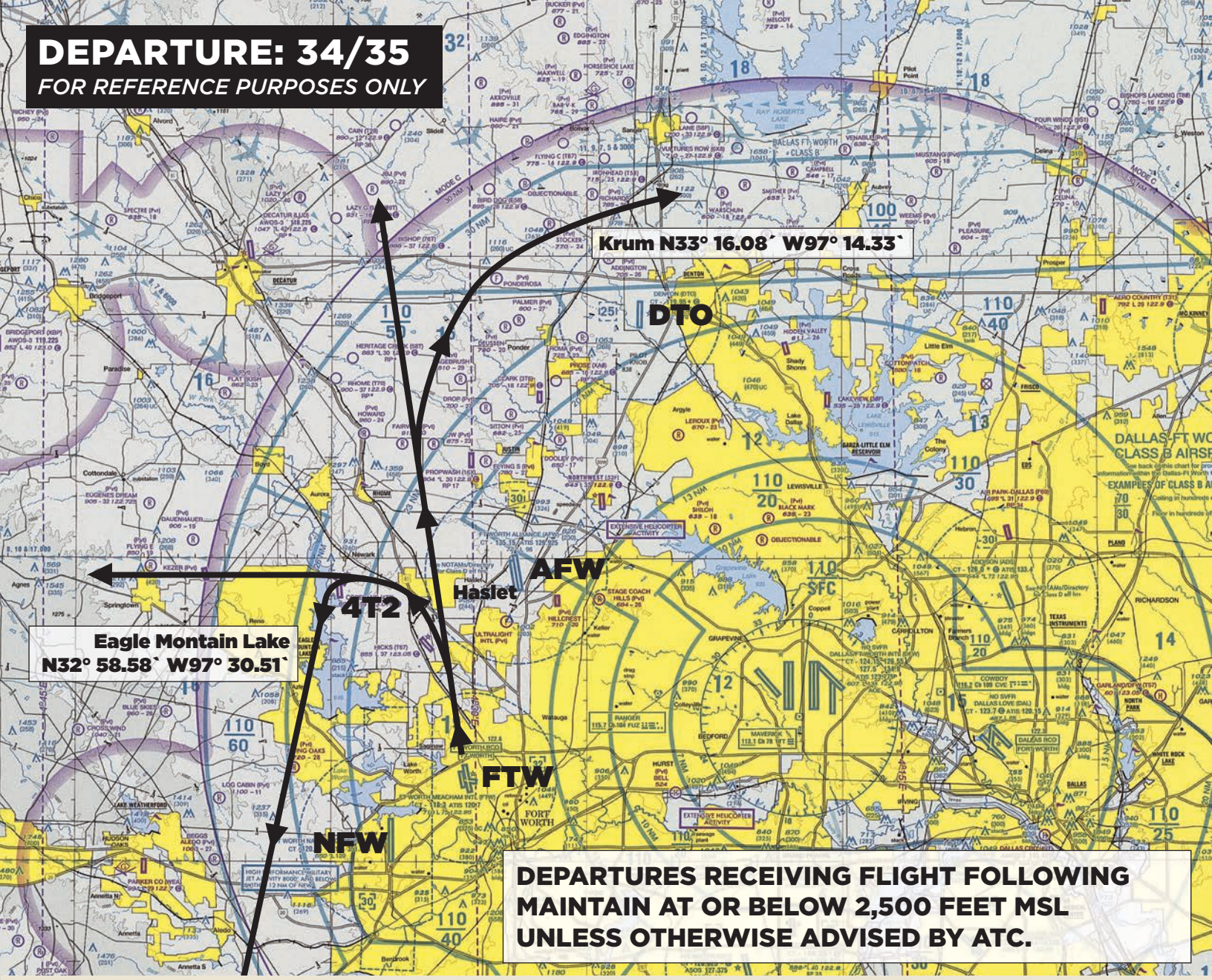
Run-Up – Parking areas are designated as non-movement areas. After start-up proceed to the nearest designated run-up area. DO NOT contact ground control. When your run-up is complete, proceed to the designated call box and MONITOR ground on 121.9. Be sure you know the name of the designated area in which you are located.

Taxi – Departures should expect runway 16/34. Once you are number one in the designated call up area monitor Ground Control on 121.9. When you hear your location called respond with your call sign, location, departure status and ATIS code. If you are parked on the west side of runway 16/34, include in your reply whether you can accept an intersection departure or whether you will need full

length. Departure status will be either "IFR, "VFR squawking xxx (assigned transponder code)" or "VFR xxx-bound". (N123, spot number, VFR West-bound, ATIS Zulu.) Signage along the taxi route will advise you when to switch to and monitor tower frequency. DO NOT contact tower.

Tower Frequency – Monitor Tower frequency and be ready for immediate take off. DO NOT contact Tower. Tower will contact you when cleared for departure.

DEPARTURE: 34/35
FOR REFERENCE PURPOSES ONLY



DEPARTURES RECEIVING FLIGHT FOLLOWING MAINTAIN AT OR BELOW 2,500 FEET MSL UNLESS OTHERWISE ADVISED BY ATC.

UNLESS OTHERWISE ADVISED BY ATC, FLY THE VFR DEPARTURE AS DEPICTED. DEPARTING RUNWAYS 34/35

Northbound departures can expect to fly runway heading toward the town of Haslett, continuing north unless otherwise advised by ATC.

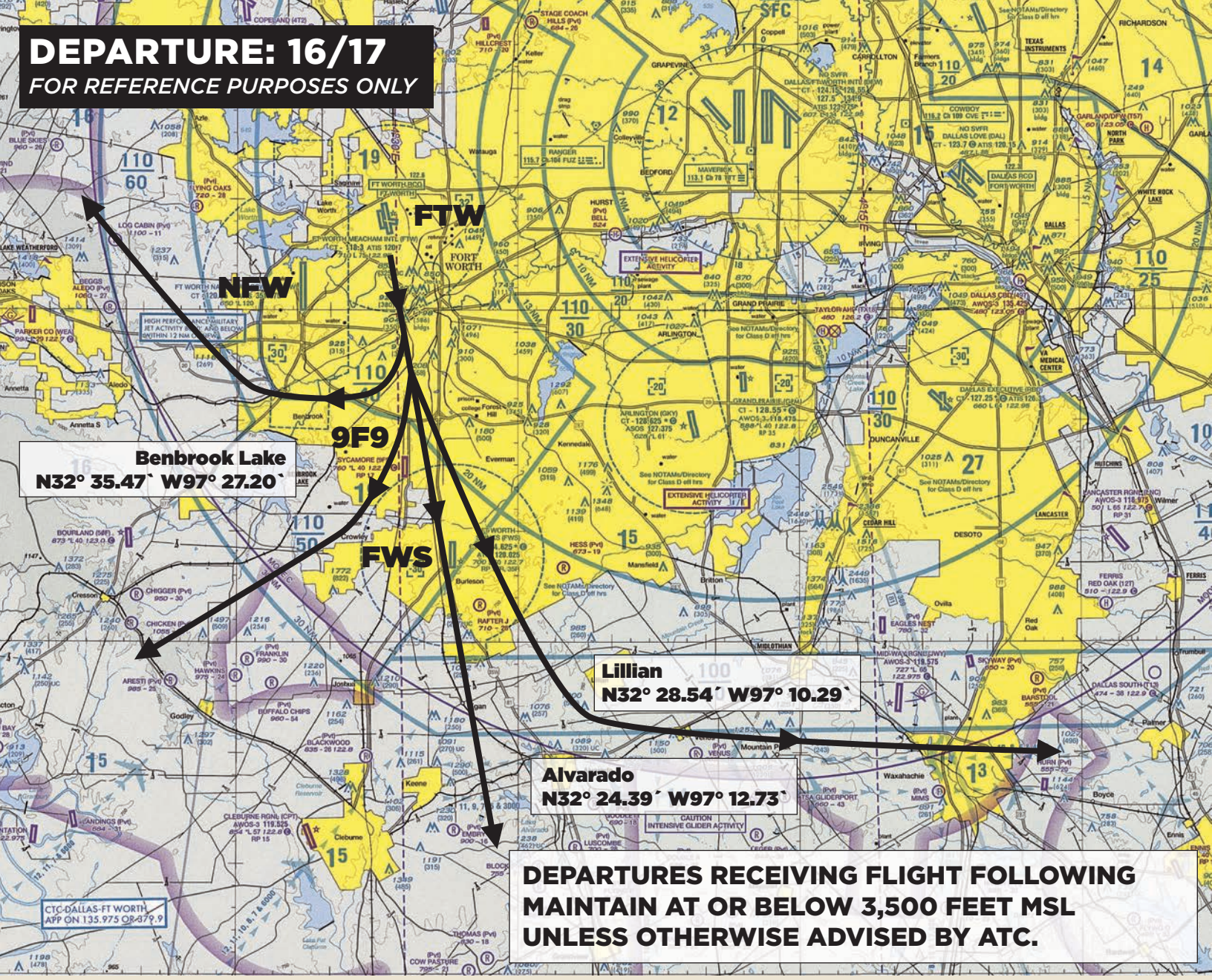
East/Northeast departures can expect to fly the same route and turn Northeast bound towards the city of Krum, just north of the Denton Airport (DTO) Class D airspace, then on course.

West/Southwest departures can expect runway heading toward the town of Haslett, then westbound.

South/Southeast departures can expect runway heading toward the town of Haslett, then west toward Copeland (4T2)/north shore of Eagle Mountain Lake, then southbound clear of the Fort Worth Naval Air Station (NFW) Class D Airspace.

Departures receiving flight following maintain at or below 2,500 feet MSL unless otherwise advised by ATC.

DEPARTURE: 16/17
FOR REFERENCE PURPOSES ONLY



Benbrook Lake
N32° 35.47' W97° 27.20'

Lillian
N32° 28.54' W97° 10.29'

Alvarado
N32° 24.39' W97° 12.73'

DEPARTURES RECEIVING FLIGHT FOLLOWING MAINTAIN AT OR BELOW 3,500 FEET MSL UNLESS OTHERWISE ADVISED BY ATC.

UNLESS OTHERWISE ADVISED BY ATC, FLY THE VFR DEPARTURE AS DEPICTED. DEPARTING RUNWAYS 16/17

South/Southeast departures can expect to fly runway heading towards Fort Worth Spinks (FWS), then on course.

Eastbound departures can expect to fly runway heading towards Fort Worth Spinks (FWS), then eastbound towards the towns of Lillian/Alvarado, then on course as directed.

West/Southwest/Northwest departures can expect to fly runway heading towards Sycamore Airport (9F9), then West/Southwest-bound on course.

North/Northeast-bound departures can expect runway heading towards Fort Worth Spinks (FWS), then west towards the north shore of Benbrook Lake, northwest bound around Fort Worth Naval Air Station (NFW) Class D airspace then on course below Dallas/Fort Worth (DFW) Class B.

Departures receiving flight following maintain at or below 3,500 feet MSL unless otherwise advised by ATC.

CAUTION FORT WORTH SPINKS (FWS) CLASS D AIRSPACE BELOW 3,000 FEET MSL TO THE SOUTH OF FORT WORTH MEACHAM (FTW).

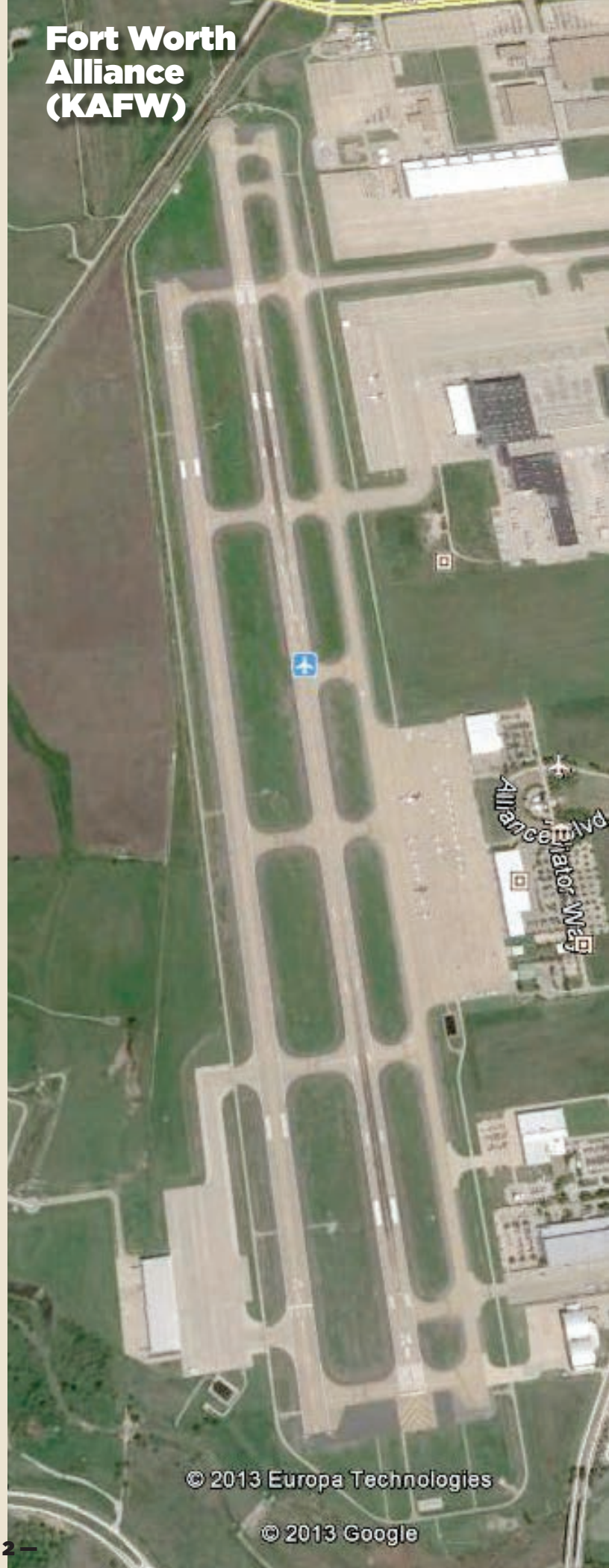
Sycamore Strip (9F9)



© 2013 Europa Technologies

© 2013 Google

Fort Worth Alliance (KAFW)



© 2013 Europa Technologies

© 2013 Google

**Hicks Airfield
(T67)**

**Fort Worth
Spinks (KFWS)**



© 2013 Europa Technologies

© 2013 Google

© 2013 Europa Technologies

© 2013 Google

**Parker County
Airport (KWEA)**



© 2013 Europa Technologies

© 2013 Google

**Cleburne
Regional
(KCPT)**



© 2013 Europa Technologies

© 2013 Google