

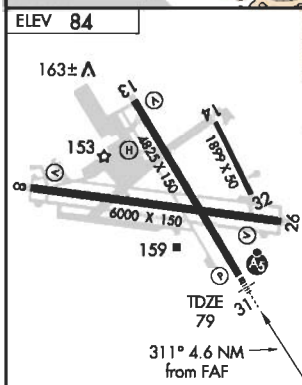
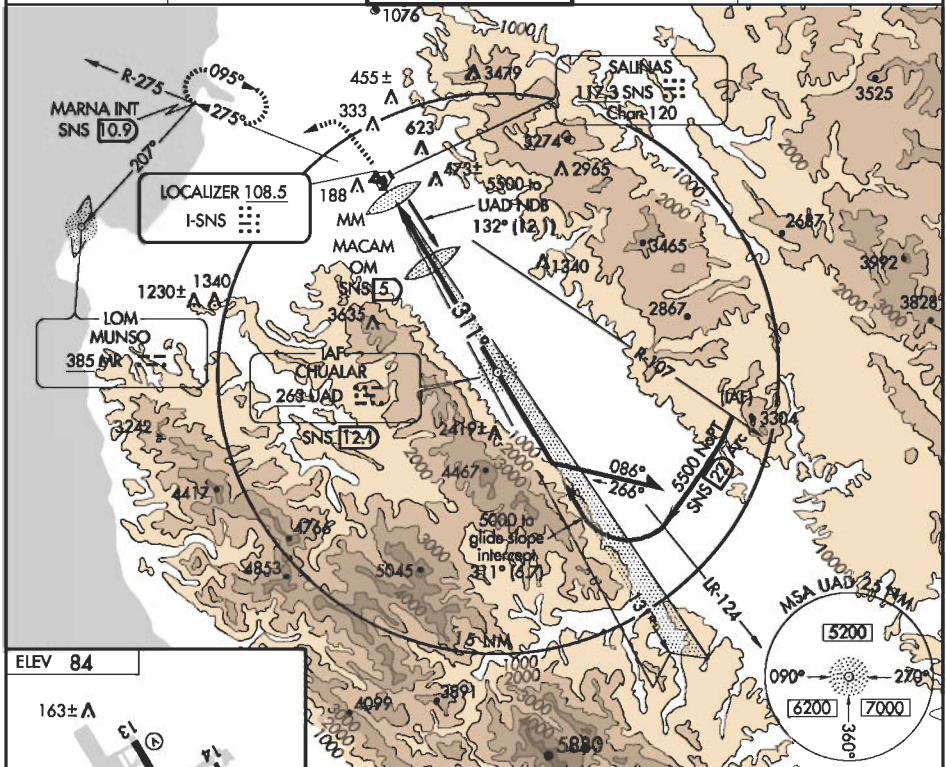
ILS RWY 31

SALINAS MUNI (SNS)

LOC I-SNS 108.5	APP CRS 311°	Rwy ldg 4825
		TDZE 79
		Apl Elev 84

<p>⚠ Circling requires descent on glide slope to MDA.</p> <p>⚠ MALSR</p>	<p>MISSED APPROACH: Climb to 800 then climbing left turn to 3000 via SNS R-275 to MARNA Int/10.9 DME and hold.</p>
--	--

ATIS 124.85	NORCAL APP CON 133.0 251.15	SALINAS TOWER* 119.4 (CTAF) 0 239.3	GND CON 121.7	UNICOM 122.95
-----------------------	---------------------------------------	---	-------------------------	-------------------------

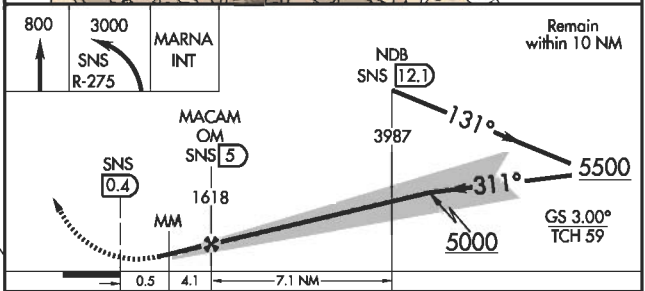


ELEV 84

HIRL Rwy 13-31
MIRL Rwy 8-26
REIL Rwy 13

FAF to MAP 4.6 NM

Knots	60	90	120	150	180
Min:Sec	4:36	3:04	2:18	1:50	1:32



CATEGORY	A	B	C	D
S-ILS 31	279/24 200 (200-½)			
S-LOC 31	When glide slope not used, use LOC/DME Rwy 31 Procedure			
CIRCLING	560-1 476 (500-1)	580-1 496 (500-1)	580-½ 496 (500-½)	780-2¼ 696 (700-2¼)