

KACY

Atlantic City Intl
Atlantic City, NJ

9.00 mi NW of city N39 27.4545' W74 34.6293' Mag Var: 10W

Nav aids:

Type:	ID:	Morse:	Frequency:	Radial:	Distance:
VORTAC	ACY	..- .-.-	117.15	349	0 nm
VOR/DME	VCN-	115.2	115	19 nm
VORTAC	CYN	..- .-.-	113.4	207	23 nm

Traffic Patterns:

No TPA reported. Assume 1,000 AGL.
Left: 04,22,13,31 (Assumed Left: H1)

Runways:

Name:	Dimensions:	Material:	Condition:	Treatment:
04/22	6145X150	asphalt	good	grooved
<i>Tree; 2150' from end; 270' Right of center; 49' high; 39:1 clearance slope;</i>				
<i>Trees; 2200' from end; 500' Right of center; 63' high; 31:1 clearance slope;</i>				
13/31	10001X150	asphalt	good	grooved
<i>Road; 720' from end; 570' Right of center; 14' high; 37:1 clearance slope;</i>				
<i>Antenna; 1191' from end; 5' Right of center; 25' high; 39:1 clearance slope;</i>				
H1	102X102	asphalt	not reported	no treatment

Tower:

Primary Approach Control Hrs: 24
Primary Depart. Control Hrs: 24
Tower Hrs: 24

Charts: NACO: Washington Sectional

Fees: Deicing I, Deicing IV, GPU, Handling, Infrastructure, Lavatory, Overnight

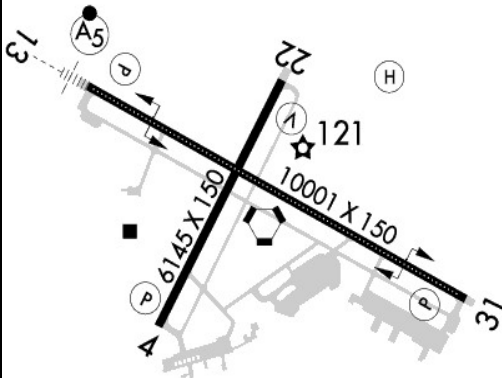
Fuel: 100LL Low-Lead, Jet A

Phone: 609-645-7895

Communication Freqs:

140.7 *ANG OPS*
134.25 *App/Dep (310-129)*
124.6 *App/Dep IC (130-309)*
125.725 *ATIS*
124.6 *CLASS C (130-309)*
134.25 *CLASS C (310-129)*
127.85 *Clearance Delivery*
121.5 *Emergency*
121.9 *Ground Control*
123.4 *OPS (FAA OPS)*
120.3 *Tower*

Elevation: 75 ft (22.9 m)



Weather: 609-277-2644 (ASOS)

Notes:

Security Directive SD-8G
Year-round, 7 Days a Week, All
US Customs User Fee Arpt.
US Customs User Fee Arpt. Customs Avbl Mon-Fri 0800-1700. Provide Minimum 24 Hr Advance Notice to Arrange for Customs. All Calls to Customs Mon-Fri 0800-1700; Phone 609-484-1610. US Customs Fax 609-484-1614.
Ang Arm/Dearm Pads for Mil Use Only.
Avoid Cntrln Lgt Dur Cable Engagement to Prevent Tailhook Bounce.
Durg Atc Zero Events, CTAF 120.3.
FAA Apron Prior Permission Required Call 609-485-6482.
Fox & Birds on & In vicinity of Arpt.
High Per Mil Acft Operating At Arpt.
Military: Ang: Bash Phase II in Efc Apr-Oct CTC Base Operations on 261.0 or 140.7 for Current Bash Cond.
Military: Ang: Nstd Mrk on Ang Ramps: Blue Lines Delineate F-16 Wing Tip Clnc, Yellow Lines At Hgr Doors for Pers Clear Zone.
Military: Ang: Ppr, CTC Ang Base Operations C609-761-6009, Fax C609-761-6484, Comd Post C609-761-6001. Ltd Tran Svc Avbl 1100-2030Z++ Tue-Fri, Clsd Sat-Mon and Hol.
No Trng Flts 2300-0700 Lcl.
Noise Abatement Procs in Efc CTC Airport Operations 609-645-7895 Extn 2002.
Twy C Clsd to Dual Tandem & Double Tandem Equipped Acft.
Pcr Value: 480/R/B/W/T
Pcr Value: 601/F/A/X/T
Pvt - Experimental Use Only. CTC FAA Tech Center At 609-485-6675.
Bak-14 Bak-12B (B) (1600')
Bak-14 Bak-12B (B) (1600')
For Charter Operations CTC 609-645-7895X2002.

FBO's Summary:

Signature Flight Support

Location: SE
Phone: 609-383-3993; Hours: 24/7

Other (Non-FBO) Businesses Summary:

Atlantic Cape Community College

Phone: 609-343-4992; Hours: By Appointment

