

KADW

Joint Base Andrews
Camp Springs, MD

3.00 mi E of city N38 48.6495' W76 52.0228' Mag Var: 10W

Nav aids:

Type:	ID:	Morse:	Frequency:	Radial:	Distance:
VORTAC	ADW	· _ · _ · _	113.1	360	0 nm
VOR/DME	DCA	· · · _ · _	111.0	119	8 nm
VORTAC	BAL	· · · _ · _	115.1	215	24 nm

Traffic Patterns (FAA):

Ovhd Pat 2000(1720), Rectangular Pat 1500(1220), Lgt Acft & Helicopter 1000(720)
Left: 01L, 19R, 01R, 19L

Runways:

Name:	Dimensions:	Material:	Condition:	Treatment:
01L/19R	9318X200	concrete	not reported	grooved
01R/19L	9756X150	asphalt	not reported	grooved

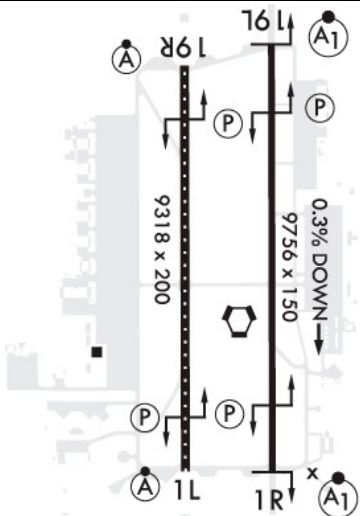
Tower:

Mil Ops Hrs: 24
Tower Hrs: 24
Par/Asr Shutdown 2300-0700.

Charts: NACO: Washington Sectional

Phone: 301-981-9442

Elevation: 280 ft (85.3 m)



Notes:

Rstd: Asde in Use. Opr Transponders with Alt Reporting Mode and Ads-B (If Equipped) Enable in Ctl Movement Area.
Rstd: CTC 89 Oss Am Operations for Waiver Dsn 858-3411.
Rstd: Kadw Rstd to Offl Bus Only (Obo).
Rstd: Official Business Only. Pprs for All Aircraft. Dvs, Sam, Evac are Exempt from Restrictions However Require Prior Permission Required for Tracking and Ramp Avbl. Dsn 858-3411. All Tran Acft Must Obtain Prior Permission Required NR for Tracking and Ramp Avbl Via E-Mail: 89Oss.Osa@Us.Af.Mil or Dsn 858-3411/9442 or C301-981-3411/9442 No Less Than 48 Hr Prior to Arr.
Rstd: All Inbd Acft CTC Andrews Comd Post (316 Wg Comd Post) 1 Hr Out with Dv Codes, Load Msg, Blocktime, Etd and Rqr. Amc Acft Opr Rstd Dur Bird Watch Cond Moderate (Tkof or Ldg Perms Only When Dep/Arr Rte Avoid Ident Bird Act, No Lcl Ifr/VFR Tfc Pat Act) and Severe (Tkof or Ldg Proh Wo Og/Cc), CTC Baseops for Current Bird Watch Cond.
Rstd: All Jet Acft are Advs to Taxi S of Twy Sierra Cntrln Due to Pavement Degradation.
Rstd: Am Operations Does not Have Comsec Stor Fac; Tran Crews Should Plan to Arr with Appropriate Amt of Comsec to Cmplt Msn; Comsec Can be Stored At Comd Post; Dsn 858-5058, C301-981-5058.
Rstd: Compass Rose Clsd Exc to Towed Acft. Pad 12 Clsd. Twy E-4 Ltd to C130 and C20/G5 and Smaller Acft.
Rstd: Current Bird Watch Cond. E-4 Acft Rqr Airfield Manager Apvl to Use Rwy 01R/19L Due to Weak Feature At Approach End Rwy 01R. All Twys are 75 Ft Wide Exc Twy E1 & Twy E2. Twy E between Twys E1 & E4 are Only 50 Ft Wide. Twy E, N of E3 Clsd to Acft with Wg Span Greater Than 165' (C5 , B747, C17, Kc10, Etc).
Rstd: for Ron Svc Call 316 Wg Comd Post Dsn 858-5058 or C301-981-5058.
Rstd: No General Aviation Acft, No Aero Club Support. No Arr/Dep of Tran Ftr Acft with Live Forward Firing Munitions.
Rstd: Rwy 01L-19R Displ Thld Tkoff or Ldg Use Rstd to Presidential Airlift Gp(Pag) 459 Arw Acft 1Accs Acft or with 89 Og/Cc Apvr.
Rstd: Rwy 01L/19R South End Underrun/Orverrun Unusbl Due to Pavement Degradation.
Rstd: Rwy 01R-19L B-747/An-124 Opr Proh, Exc 89Aw Acft, Due Foreign Object Damage Potential; Waiver Authority is 316 Og/Cc. Prior Permission Required Exc Amc, Sam, Dod Courier Svc, & Evac Msn Dsn 858-3411. All Acft Filing to Adw Must Call for Ramp Freeze Info, Ramp Freezes Close Airfield Up to 30 Min, Delays are Possible.
Rwy 01L/19R Mandatory Rwy Hold Signs At End Intersections of Txwys N, S, and W Contain Incorrect Legend. Rwy 01L/19R and Rwy 01R/19L Hold Signs At Instrument Critical Areas on Txwys W, N, S, and E Contain Incorrect Legend.
Service-A-Gear: Rwy 01R-19L North and South Mb60 A-G Unsvc.
Service-Fuel: Avail Fuel Code A++.
Svc-Lgt: Rwy 01L/19R PAPI and IIs Rpi not Coincidental. Rwy 01L Approach End PAPI Lctd on Rgt Side of Rwy. Rwy 01L/19R PAPI Set for Hgt Group 4. Rwy 01R/19L PAPI and IIs Rpi not Coincidental. Rwy 01R/19L PAPI Set for Hgt Group 3.
Tfc Pat: Acft Req VFR Multi Pat Must Use Twr Vhf Freq.
Tfc Pat: Because of Extremely Hvy Air Tfc to the W, All Acft on Overhead Pat Will Enter Fm the 'E', Regardless of Ldg Rwy. Overhead Pat 2000 Ft, Rectangular Pat 1500 Ft, Lgt Acft 1000 Ft, Copter 800 Ft.
Tran Alert: Exp Delays At Ngd, Wkend and Hol.
West Ramp Rows 2, 3, and 4 Closed When Dv Movement Aircraft Present on Row 5.
Rwy 19R Avl Tkof District Incl Hardened Ovrn is 10918 Ft X 200 Ft.
Bak-14 Bak-12B(B) (2240 Ft).
Bak-14 Bak-12B(B) (1500 Ft).
Bak-14 Bak-12B(B) (1537 Ft).
Bak-14 Bak-12B(B) (2240 Ft).



Notes:

During Winter Weather Events Aircrew May Receive Airfield Status Information At <http://Rt3Grip.Com/Andrews/Login.Php> After Retrieving the Login Information from Am Operations At Dsn 858-9442 or C301-981-9442.

Eff Rwy 01L/19R (Btn Dsplcd Thr) Avbl for Tkof and Ldg is 9318 Ft. Do not Land Prior to Mkd Rwy Thr; Dsplcd Thr May not be Used for Tkof or Ldg Roll Out. Offl Terps End of Rwy for Obst Protection is Mkd Thr. Do not Use Opposite End Dsplcd Thr for Tkof Computations or Tkof Roll. Rwy 01L/19R Len of 11318 Ft is for Presidential Airlift Gp (Pag), 459 Arw Acft, 1 Accs & Other 89 Og/Cc Apv Acft Ops. Og/Cc Apvl Rqrd for Use of the Dsplcd Thrs for Tkof or Ldgs.

Fluid: Sp Presair De-Ice Lpox Hpox Lox.

Fuel Navy: J8-Avbl O/R Exp Min 1 Hr Delay.

Fuel: Exp 30 Min Delay. Aircrew of Transient Aircraft Requiring Power on Refueling Must Assist in Refueling. J8.

Ils: Awl Mls Unuse: Cw Byd 220 Deg; Inside 2.5 DME Cw Byd 210 Deg Blw 2.5 Deg. Disregard Guidance Signal Found Cw Byd 230 Deg and Ccw Byd 150 Deg. Awl Mls Elev Unuse Cw Byd 210 Deg Abv 12 Deg; Ccw Board 170 Deg Abv 12 Deg.

Jasu: (A/M32A-86) 9(Am32-95).

Misc-Navy: East/Navy Side Tran Svc not Avbl 24/7. Exc for Dv Flt Navy Hq Bldg Open 1230-2130Z++ Mon-Fri. for After Hr Arrivals CTC Nafw At C240-381-2739/C240-857-4880.

Misc: All Tran Aft Will Hold on Twy W for Flw Me Veh Prior to Entering Prk Ramp. First 4300 Ft and Last 325 Ft Rwy 01R Concrete. Ftr/Tmng Acft Bring Eng Covers. Acft with Vip Exp Transfer to AF Copter Must CTC Mussel Operations (141.7 292.2) 15 Min Out If Arr Will be Different Than Sked.

Misc: for Flt Planning, Use Dca Preferred Ifr Routes Lctd At <http://www.fly.faa.gov/rmt/N.Fdc-Preferred-Routes-Database.Jsp>.

Misc: Rwy 01L/19R Grooved.

Misc: Winds are Est Due to Fmq-13 Wind Sensors Being Accurate to Within Only +/- 4 Kt. Atc/Wx Will not Incl/Relay Wind Corr Into Fcst/Phraseology. Therefore, Aircrews Will Incorporate A +/- 4 Kt Accuracy Into Their Decision Making Process for Flying Opr. No Practice Approach between 0300-1100Z++, All Arr Acft Expect Full Stop Ldg. Quiet Hr Normally 0300-1100Z++.

Noise Abatement Navy Ramp: Turboprop Taxi Lo Idle and Secure Outboard Eng Prior to Ramp Entry, Exm Dur Ice Cond.

Noise Abatement: Strict Compliance with Pro Rqr. Airfield Mgmt Operations Dsn 858-3411, C301-981-3411.

Oil: Soap.

Remarks-Caution: Obst (Acft Tails) Encroach Upon 7:1 Trns Sfc; Westside, between Prk Rows 1-12, Tail Hgts May Encroach by 16 Ft 7In. East Ramp, Tail Hgts May Encroach by 51 Ft 6In.

Remarks-Rstd: Rwy 01L/19R Length Including Dsplcd Thr Areas is 10918 Ft X 200 Ft. Opr Use of Rwy 01L/19R Dsplcd Thr Areas for Tkof And/Or Ldg Rollout Specifically Authority for Presidential Airlift Group (Pag), 459 Arw Acft, 1 Accs and Other 89 Og/Cc Apvd Acft. Northernmost 400 Ft of Ovrrn Dsplcd Thr Areas Can Accommodate Only Idle Thrust Jet Blast. Only Southernmost 600 Ft of Rwy 19R Dsplcd Thr Areas (North End of Rwy 01L/19R) is Usbl for Tkof (I.E. Point At Which Tkof Power Can be Applied) Due to Proximity of Loc Ant Array Install 1200 Ft Fm Rwy 19R Ldg Thr.

Remarks-Rstd: Rwy 01L/19R Len of 11318 Ft is for Presidential Airlift Gp (Pag), 459 Arw Acft & 1 Accs Acft & Other 89 Og/Cc Apvd Acft Ops. Apvl for Use of the Dsplcd Thrs for Tkof or Ldgs Rqr 89 Og/Cc Apvl.

Rstd Navy: Aircrews Destn to Navy Ramp File "Navy Ramp" in Remarks Section of Flt Plan.

Notes:

Year-round, 7 Days a Week, All

Andrews Air Traffic Control Tower Now Providing Pre- Departure Clearances (Pdc) Via Terminal Data Link. Acft Operators or Pilots Wishing to Participate Must Apply for Svc by Contacting: Federal Aviation Administration, Aeronautical Data Link Product Lead, And-370, 800 Independence Avenue Sw, Washington, Dc 20591.

Ang: Prior Permission Required for Svcg and Use of Prk Ramps. No Avgas or Reciprocating Eng Oil Avbl, Ltd Maint. CTC 201 Operations Dsn 857-7161/62, Uhf 314.25; Lctd W Side Adw. 113 Wg, Dcang Dsn 857-4190/91, Uhf 234.8; Lctd E Side Adw. No Tran Maint Avbl.

Ans Abatement: 0000-1100Z++, Dly, No Helo Ovft or Tfc Pat W of Rwy 01L/19R (Over Base Housing) Blw 800 Ft AGL.

Aoe.

Bearing Strength Rwy 01L/19R: S85 T220 St175 Sbt158 Tt327 Tdt840 Ddt800 Trt556.

Bearing Strength Rwy 01R/19L: S85 T205 St175 Tt380 Tdt800 Ddt800 .

Caution: Vis Above 3 Miles Hindered by Trees. Wind Flow from 200 Deg-300 Deg Disruped by Hangar on Southesast Side of Airfield.

Caution: Extremely Hvy VFR Conflicting Tfc N and S Quad. Deer Haz, Deer are Act on Andrews Aft, Pilots Rpt Any Act to Twr/Ptd. Bird Haz-Exp Increased Bird Act (Phaseii) Fr Sep-Oct.

Caution: Flight Restricted Zone and Sfra in the Washington Dc Metropolitan Area. All Non-Dod Acft Must Ctc. Transportation Security Administration for Sfra Waiver law Zdc Notams 5-7 Days Prior.

Caution: Obst Erected: Crane 572 Ft MSL W of Airfield At New Brac Fac (N38 48 51.67 W076 53 22.92).

Communications-Comd Post: Vhf O/S Ufn.

Communications-Pmsv Metro: Remarks: H24 Wx Svc Avbl At Dsn 858-2840, C301-981-2840/5826. An/Fmq-19 Automated Observing Sys in Use; Augmented by Human Obsn When Nec. If Wx Flt Unavbl, Remote Svc Avbl Fr 15 Opr Wx Squadron Dsn 576-9755 C618-256-9755.

Communications-Ptd: O/S Ufn.

Cstm/Ag/Img Nav; Cstms Avbl 1230-2130Z++, Incl Hol; on Call H24.

Cstms/Ag/Img: Cbp Rqr the Following Forms for Arr Acft - Cbp Form 7507 (11/12) General Declaration, Cbp Form 6059B (04/14) Customs Declaration Lctd

<https://www.cbp.gov/newsroom/publications/forms>.

