

KBGM

Greater Binghamton/Edwin A Link Fld
Binghamton, NY

7.00 mi N of city N42 12.5067' W75 58.7767' Mag Var: 12W

Nav aids:

Type:	ID:	Morse:	Frequency:	Radial:	Distance:
VOR/DME	CFB	..- .- .-..	112.2	076	8 nm
DME	ITH	.. _	111.8	129	27 nm
VOR/DME	HNK	... _ .- _-	116.8	298	31 nm

Traffic Patterns (FAA):

TPA: 800' AGL

Left: 10,28 (Assumed Left: 16,34,H1)

Runways:

Name:	Dimensions:	Material:	Condition:	Treatment:
10/28	5001X150	asphalt	excellent	grooved
16/34	7305X150	asphalt	good	grooved

Antenna: 225' from end; 250' Left of center; 7' high; 3:1 clearance slope;

H1	54X54	asphalt	good	no treatment
----	-------	---------	------	--------------

Tower:

Primary Approach Control Hrs: 0600-0000

Primary Depart. Control Hrs: 0600-0000

Secondary Approach Control Hrs: 0000-0600

Secondary Depart. Control Hrs: 0000-0600

Tower Hrs: 0600-0000

Apch/Dep Svc Prvdd By New York Artcc On Freqs 132.175/298.9 (Elk Mountain Rcag) When Binghamton Apch Ctl Clsd.

For Clnc Del When Atct Clsd Ctc Buffalo Radio On Cfb Rco 122.1R 112.2T.

Charts:

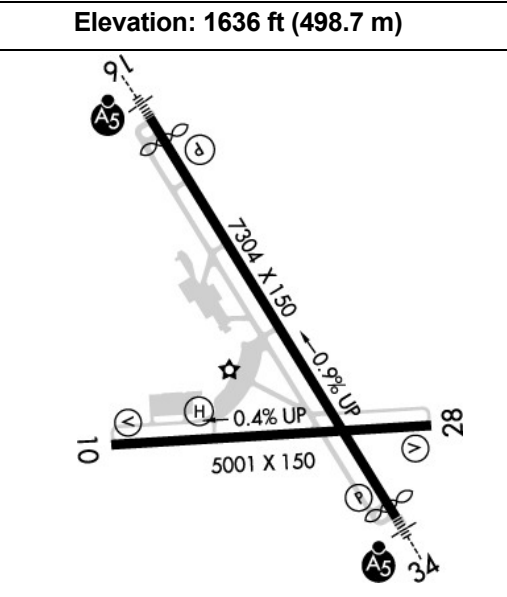
NACO: New York Sectional

Fees:

After Hours, Hangar, Landing, Overnight, Quick Turn, Ramp, Same Day Return Ramp

Communication Freqs:

127.55	App/Dep (6000-8000 FT)
118.6	App/Dep IC (SFC TO 5000 FT)
128.15	ATIS
125.05	Clearance Delivery
119.3	CTAF
121.5	Emergency
121.9	Ground Control
119.3	Tower
118.6	TRSA (SFC TO 5000 FT)
127.55	TRSA (6000-8000 FT)
122.95	UNICOM



Lighting:

When Air Traffic Control Tower Clsd Actvt MALSR Rwy 16 & 34; HIRL Rwy 16/34; MIRL Rwy 10/28; Twy Lgts - CTAF.

Dusk-Dawn.

Fuel:

100LL Low-Lead, Jet A

Phone:

607-763-4471

Weather:

607-200-3489 (ASOS)

Notes:

Landing fee for multi-engine and turbine aircraft over 4000 pounds

US Customs user fee airport

Year-round, 7 Days a Week,All

US Customs User Fee Arpt.

Atct Unable to See Hard Sfc S of FBO Hangar.

Bird Act on & In vicinity of Arpt.

Extsv Gldr Act 10 Nm Southwest of Arpt.

For Cd If Una to CTC on FSS Freq, CTC New York ARTCC at 631-468-1425.

Lgtd Structure 118 Ft AGL 2000 Ft S of Approach End of Runway 10.

Pilots Conducting Efvs Ops; be Aware Led Als in Use Rwy 16 & Rwy 34.

Ppr 12 Hrs for Unsked Acr Operations with More Than 9 Pax Seats 2300-0600 Call Airport Manager 607-763-4474. Arff Avbl 0530-0000 And/Or Til 15 Min Aft the Last Sked Acr Opn.

Pcr Value: 350/F/D/X/T

Rwy 10 Tkofs & Ldgs Na When Air Traffic Control Tower Clsd.

Hldg Psn Signs for Rwy 16/34 Reside Aft the Hold Line. When Hldg Ensure All Parts of the Acft Rmn Bhnd the Hold Ln.

Pcr Value: 740/F/D/X/T

Helipad Lctd At Int of Twy L & the W Apron.

Engineered Materials Arresting System (Emas) 315 Ft in Length by 161 Ft Width Lctd At Der 16.

Engineered Materials Arresting System (Emas) 311 Ft in Length by 161 Ft Width Lctd At Der 34.

Lndg Fee for Multi-Engine & Turbine Acft Over 4000 Lbs. US Customs User Fee Arpt.

FBO's Summary:

FirstAIR Group, Inc.

Location: W

Phone: 607-644-1062; Freq: ARINC: 129.550; Hours: 01/01-12/31, Sun-Sat, 04:30-22:00;

Other (Non-FBO) Businesses Summary:

Aero Techniques

Location: W

Phone: 607-770-9541; Hours: 01/01-12/31, Mon-Fri, 08:00-17:00; 01/01-12/31, Sat-Sun, 08:00-17:00;

Goodrich Aviation Maintenance Center

Location: W

Phone: 607-821-2982; Hours: 24/7

Goodrich Aviation

Location: W

Phone: 607-821-2982; Hours: By Appointment

Greater Binghamton Airport Self-Service Avgas Pump

Phone: 607-763-4474; Hours: 24/7