

KBOS

General Edward Lawrence Logan Intl Boston, MA

1.00 mi E of city N42 21.7767' W71 0.3833' Mag Var: 15W

Nav aids:

Type:	ID:	Morse:	Frequency:	Radial:	Distance:
VOT	BOS	... — ...	111.0	296	1 nm
VOR/DME	BOS	... — ...	112.7	310	1 nm
VOT	BED	... · _..	110.0	116	14 nm

Traffic Patterns:

No TPA reported. Assume 1,000 AGL.

Left: 04L,22R,04R,22L,09,27,15L,33R,15R,33L (Assumed Left: 14,32)

Runways:

Name:	Dimensions:	Material:	Condition:	Treatment:
04L/22R	7864X150	asphalt	good	grooved
Boat: 3250' from end; 161' high; 18:1 clearance slope;				
Boat: 670' from end; 44' high; 10:1 clearance slope;				
04R/22L	10006X150	asphalt	good	grooved
Boat: 1550' from end; 157' high; 8:1 clearance slope;				
Boat: 525' from end; 45' high; 7:1 clearance slope;				
09/27	7001X150	asphalt	good	grooved
Boat: 2050' from end; 158' high; 11:1 clearance slope;				
Boat: 500' from end; 45' high; 6:1 clearance slope;				
14/32	5000X100	asphalt	good	grooved
Building: 1364' from end; 70' Left of center; 174' high;				
15L/33R	2557X100	asphalt	good	no treatment
15R/33L	10083X150	asphalt	excellent	grooved
Trees: 3040' from end; 140' Left of center; 62' high; 45:1 clearance slope;				
Boat: 5075' from end; 160' high; 30:1 clearance slope;				

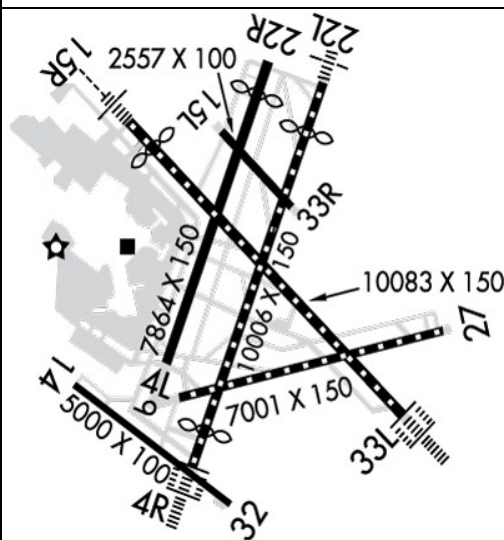
Charts: NACO: New York Sectional

Fees: Deicing I, Deicing IV, GPU, Handling, Infrastructure, International Trash, Landing, Lavatory, Parking, Potable Water, Security

Communication Freqs:

118.25 App (NORTH)
127.2 App (SOUTH)
120.6 App IC (WEST)
135.0 WX
121.65 CD PRE TAXI CLNC
124.1 CLASS B (091-269)
124.4 CLASS B (270-090)
135.0 D-ATIS (ARR)
135.0 D-ATIS (DEP)
133.0 Dep
121.5 Emergency
121.75 Ground Control
121.9 Ground Control
134.05 RAMP CTL
124.725 Tower (HELICOPTERS)
128.8 Tower (WEST)
132.225 Tower (EAST)
122.95 UNICOM
120.6 WOONS STAR

Elevation: 19 ft (5.8 m)



Tower:

Tower Hrs: 24

Asde-X In Use. Operate Transponders With Altitude Reporting Mode And Ads-B (If Equipped)
Enabled On All Airport Surfaces.

Fuel: 100LL Low-Lead, Jet A

Phone: 617-567-5400

Weather: 339-746-6855 (ASOS)

Notes:

Year-round, 7 Days a Week, All

Birds on & In vicinity of Arpt.

For Noise Abatement, Rwy 15R is Preferred for TkoF, Rwy 33L is Preferred for Ldg. for
More Info on Noise Abatement Procs Call 617-561-3333.

Nmrs Cranes on and In vicinity of Arpt.

No Ron Parking for Non-Tenant Charter Aircraft Without Prior Massport Permission.

Pilots Should Complete All Calculations Prior to Pushback from Gate.

Rwy 14/32 Unidirectional; No Ldgs Rwy 14; No Tkofs Rwy 32.

Rwy Status Lgts in Opn.

Terminal E; North & South Cargo Arrivals CTC Massport Gate Control on Freq 131.1 Before
Entering/Departing Ramp Area.

The Use of the Rnav Sids At Boston Logan are Critical to Rdcg Noise and Achieving Our
Fly Quiet Goals. Massport and the FAA Encourage Pilots to Use Publd Rnav Flight Procs
At Boston Logan Airport Whenever Poss. All Acft That Have Req'd Alts Abv 10,000 Ft
Should be Filing Rnav Sids with FAA Atc. CTC Massport's Noise Abatement Ofc At
617-561-3333 with Any Qns.

Pcr Value: 800/F/C/X/T

See Pcn

Pcr Value: 830/F/C/X/T

See Pcn

Pcr Value: 810/F/C/X/T

See Pcn

Pcr Value: 780/F/C/X/T

See Pcn

Pcr Value: 850/F/C/X/T

See Pcn

Pcr Value: 800/F/C/X/T

See Pcn

Engineering Materials Arresting System (Emas) 190 Ft in Length by 170 Ft in Width Lctd At
Der 04L.

Apch Ratio 17:1 from Dsplcd Thr; 43:1 When Channel is Clear.

Approaches to Rwy 14 not Authorized.

Avbl for Departure Only.

Apch Ratio 50:1 from Dsplcd Thr.

Engineered Materials Arresting System (Emas) 158 Ft in Length by 170 Ft in Width Lctd At
Der 15R.

Apch Ratio 38:1 from Dsplcd Thr.

Unusbl Byd 7 Degs Left of Cntrln.

Apch Ratio 33:1 from Dsplcd Thr; 50:1 to Thr When Channel is Clear.

FBO's Summary:

Signature Flight Support

Location: NW

Phone: 617-561-2500; Freq: ARINC: 130.250; Hours: 24/7



Other (Non-FBO) Businesses Summary:
New England Aircraft Detailing
Phone: 508-640-5832; Hours: 24/7

