

1.00 mi SW of city N35 56.8385' W114 51.6651' Mag Var: 11E

Nav aids:

Type:	ID:	Morse:	Frequency:	Radial:	Distance:
VORTAC	BLD	116.7	163	3 nm
VORTAC	LAS	116.9	104	17 nm
VOT	VG	108.2	135	22 nm

Traffic Patterns:

No TPA reported. Assume 1,000 AGL.
Right: 09,15 Left: 27,33

Runways:

Name:	Dimensions:	Material:	Condition:	Treatment:
09/27	5103X75	asphalt	good	no treatment
Power-Line; 3724' from end; 0' Both-Sides of center; 123' high; 29:1 clearance slope;				
15/33	3852X75	asphalt	good	no treatment
Terrain; 400' from end; 0' Both-Sides of center; 10' high; 20:1 clearance slope;				

Lighting:

Actvt MIRL Rwy 09/27 & 15/33 - CTAF.

Charts: NACO: Las Vegas Sectional

Fees: After Hours, GPU, Parking, Tie Down

Fuel: 100LL Low-Lead, Jet A

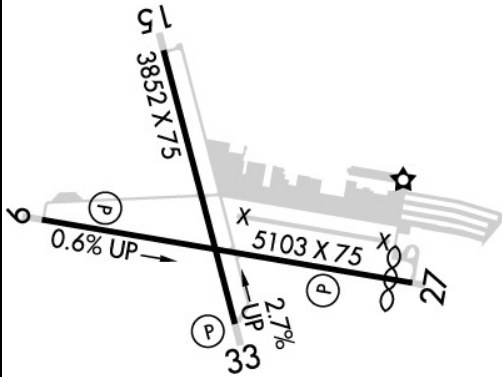
Phone: 702-293-9405

Weather: 702-293-1532 (AWOS-3)

Communication Freqs:

125.475 App
118.475 WX
122.7 CTAF
122.7 UNICOM

Elevation: 2203 ft (671.5 m)



Notes:

Year-round, 7 Days a Week, 0800-1700
Avoid Overflight of Boulder City Residential Areas.
Ctc Ap Operations for Rwy Cond Rpt, 702-293-9405, or When the Ap is Unattended.
For Atc Assistance Call or Contact Las Vegas Approach at 725-200-4432.
Helicopters Cross Active Rwy's and Twys.
Large Number of Grand Canyon Tour Acft Operations in Vicinity Transiting to & from Airport.
Operations in Southern Nevada - Unmanned Aircraft System Activity Within an Area Defined As 3Nm Radius of Bld R-197/7Nm, Sfc-400 Ft AGL.
Rwy 15/33 No Runup Area. Runup Area Ltcd on Twy D and Twy A.
Rwy 27 Preferred Under Light or No Wind Conditions.
Rwy 33 Steep Rwy Gradient; Rising Terrain; Obstacles Off Dep End of Rwy.
Skydive Drop Zone Adjacent Airport North East Side.
Steep Rising Terrain North of Arpt.
Taxiway Shoulders Adj to Twy D West of Rwy 15/33, Soft Ground and Drops Off More Than 3 Inches.
Ultralight Activity 2 Miles Southwest of Airport In vicinity of Dry Lake Bed.
Unlighted Power Lines All Quadrants.
Uphill Departures on Rwy 33 not Recommended.
Airport Manager Email: Airportadmin@Bcnv.Org 702-293-9405
Self Svc 100LL Avbl 24/7 with Cc.
Self Svc Jet-A Avbl 24/7 with Cc.

FBO's Summary:

BFE Flight Services

Location: CTR
Phone: 702-228-0455; Freq: ARINC: 123.500; Hours: 01/01-12/31, Sun-Sat, 07:00-18:00;

Boulder City Aviation Services FBO

Location: N
Phone: 702-638-3205; Freq: ARINC: 130.875; Hours: 04/01-10/31, Sun-Sat, 07:00-19:00;
11/01-03/31, Sun-Sat, 08:00-17:00;

Boulder City Municipal Airport SS

Location: E
Phone: 702-293-9405; Hours: 24/7

Other (Non-FBO) Businesses Summary:

College of Southern Nevada

Phone: 702-651-3522; Hours: By Appointment

Desert Flying Club

Phone: 702-990-7656; Hours: By Appointment

Black Mountain Avionics, Inc.

Location: NW
Phone: 702-294-1044; Hours: By Appointment

