

KCEF

Westover Arb/Metro Springfield/Chicopee, MA

3.00 mi NE of city N42 11.6409' W72 32.0872' Mag Var: 14W

Nav aids:

Type:	ID:	Morse:	Frequency:	Radial:	Distance:
VORTAC	BAF	113.0	091	8 nm
VOT	BDL	111.4	023	17 nm
DME	BYT	117.05	025	17 nm

Traffic Patterns (FAA):

Rectangular Tfc Pat: 1000' AGL Lgt Acft, 2000' AGL Lrg/Hvy Acft
Ovhd: 2500' AGL
Right: 05,33 Left: 23,15

Runways:

Name:	Dimensions:	Material:	Condition:	Treatment:
05/23	11597X300	asphalt	good	no treatment
15/33	7085X150	asphalt	good	no treatment

Tower:

Mil Ops Hrs: 0800-2300 MON-FRI; 0900-1700 SAT; 1300-2100 SUN; CLSD HOL
Tower Hrs: 0700-2300
(Atis Description) No Notam Mp: 1400-1600Z++Thu.
Atct Ops Extns/Ireg Hrs By Notam.
Command Post/439 Aw Name Casino Royale.
Ngt Obsn Ltd Due To Hi Intst Scty Lgts. Afld Wx Is Mnt By An/Fmq-19. Automated Obs Are
Qty Ctld For Accuracy Durg Atc Flying Hrs.

Charts: NACO: New York Sectional

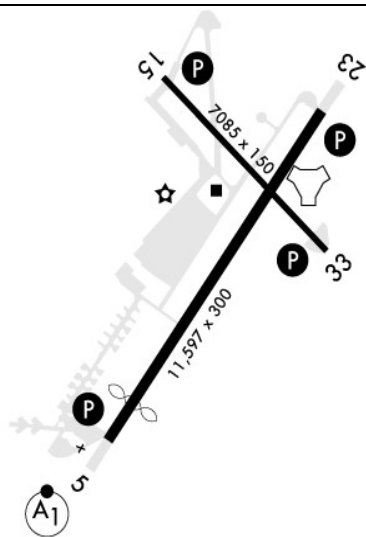
Fees: After Hours, Deicing I, GPU, Landing, Lavatory, Parking

Fuel: 100LL Low-Lead, Jet A

Communication Freqs:

125.35 App/Dep
127.525 ATIS
134.85 CTAF
123.95 DEER PARK STAR (061-240)
125.35 DEER PARK STAR (241-060)
121.5 Emergency
118.35 Ground Control
125.35 STELA STAR
134.85 Tower
122.95 UNICOM

Elevation: 241 ft (73.5 m)



Lighting:

Clear Side is Split. Dalgt Turned on When Airfield is lfr.
When Air Traffic Control Tower Clsd Actvt Alsf1 Rwy 05 & 23; PAPI Rwy 5, 15, 23 & 33;
HIRL Rwy 05/23 & 15/33 - CTAF.
Dusk-2300. Airfield Lgts not Avbl 2300-0700 Hrs.

Phone: 413-593-5543

Notes:

Year-round, Mon-Fri/0800-2300
Year-round, Sat-Sun/0900-1700
Assault Strip Mrk Painted 3000 Ft X 60 Ft on Rwy 15-33.
Caution: Eastside Pad 19, Pad 33 and Twy L Do not Have Paved Shoulders.
Caution: Lgt Acft Tfc, Hang Glider Opr and Hot Air Balloon Act Along River W and
Northwest of Arpt. Extv Hang Glider & Glider in the Mt Greylock Area Aprx 45 Nm
Northwest of Afld. Unlgted Obst W Side Rwy 05 Clear Zone.
Caution: Potential for Hydroplaning After Any Precipitation. Ponding At Int Ry 05/23 & 15/33
Measured in 1/10Th Inches; See Notams for Kcef.
Caution: Vmc Dep Acft Remain At or Blw 1000 Ft Til Past Dep End of Rwy to Ensure
Separation Fm VFR Overhead & Clsd Pat Tfc. Strobe Lgt Lctd Atop Stacks 4000 Ft Left
Rwy 23 Thr; Occasional Steam Cloud. Unctld Veh Tfc on Ramps & Twy.
Cef is A Joint-Use Afld. lfr Tkof & Ldg Min As Prescribed by USAF Region Apply.
Civ Trng Ltd to Low Approach Only; Tgl not Authority
Cust: Pilot Must Arng Cust 860-292-1314.
Hvy VFR Tfc Below 10,000 Ft Along River & Hwy 5 Nm Southwest of Afld.
Lgt: PAPI Off Dur Opr Hr Periods of No Tfc.
Military: Acft on A Ja/Att, Jcs, Tactical Exer, Mil Chtr Mission CTC 439 Lrs/Lgrdx Dsn
589-3318/3125 to Coord Support Rqmnts. Lgrdx Will Arng All Rqrd Support. Saam Missions
Cdn Will be Made with Airfield Manager Dsn 589-2944.
Military: Rstd: Civ Pilots are Reminded to Check Mil Notams by Visiting the Federal Notam
System (Fns) Website (<https://Notams.Aim.FAA.Gov/Notamsearch/>) or Contacting Flight
Service First 1000 Ft Each End Rwy 05-23 Conc and Mid 9597 Ft is Asph.
Papi All Rwys Prvd Proper Tch for Hgt Gp4 Acft Only.
Pcl Only Authority with 5 Hr Prior Permission Required to Metropolitan FBO.
Rstd: Aft Hrs Dep/Arr 24 Hr Prior Permission Required Notice 413-593-5543.
Rstd: Prior Permission Required Dsn 589-2951, C413-557-2951.
Rwy 15 Wind Data Est Avbl At All Times.
Trans Alert: Fleet Svc for Tran Acft Unavbl Wkend and M-F 2030-0400Z++ Without Prior
Apvl Fr Amops Dsn 589-2951.
When Air Traffic Control Tower Clsd, for Cd CTC Bradley Approach 860-386-3580.
Civ Ptn of the Airport (Twy A, P & S) is Owned by Westover Metropolitan Dev Corp, 255
Padgette St, Chicopee Ma 01020.
Ctc Airport Manager for Civ Operations Andy Widor At A.Widor@Westoverairport.Com.
1000 Ft Ovrn Both Ends of Rwy.
Alsf-1 Sfl Ptn Out of service Ufn.
No Rvr Avbl.
Papi Unusbl Byd 6 Degs R.
Fuel Opr Hrs 1200-0400Z++ Wkdays, 1200-2000Z++ Sat-Sun Exc Hol.

FBO's Summary:

Metro Air Services

Location: SW
Phone: 413-593-5543; Hours: 01/01-12/31, Sun-Sat, 07:00-23:00;

