

KCLT

Charlotte/Douglas Intl
Charlotte, NC

5.00 mi W of city N35 12.7912' W80 57.0828' Mag Var: 07W

Nav aids:

Type:	ID:	Morse:	Frequency:	Radial:	Distance:
VOT	CLT	-.·- ·-·- -	112.0	159	1 nm
VOR/DME	CLT	-.·- ·-·- -	115.0	006	1 nm
DME	XKD	-.·- ·-·- -	116.35	025	29 nm

Traffic Patterns:

No TPA reported. Assume 1,000 AGL.

Left: 18L,36R (Assumed Left: 18C,36C,18R,36L)

Runways:

Name:	Dimensions:	Material:	Condition:	Treatment:
18C/36C	10000X150	concrete	good	grooved
Road: 1350' from end; 425' Left of center; 25' high; 46:1 clearance slope;				
18L/36R	8676X150	asphalt	good	grooved
Railroad: 523' from end; 0' Both-Sides of center; 19' high; 17:1 clearance slope;				
18R/36L	9000X150	concrete	excellent	grooved

Tower:

Primary Approach Control Hrs: 24

Primary Depart. Control Hrs: 24

Tower Hrs: 24

Asde-X In Use. Operate Transponders With Altitude Reporting Mode And Ads-B (If Equipped)

Enabled On All Airport Surfaces.

Cd Freq 127.2 Ots Indefly At Gastonia Muni (Akh), Gastonia, Nc.

Ots Indefly.

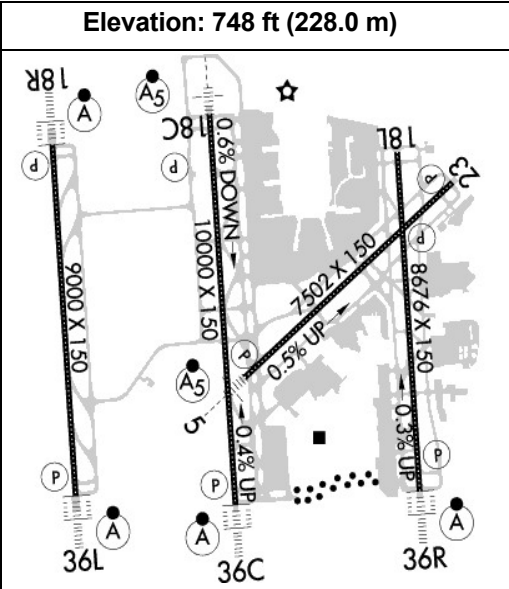
Charts:

NACO: Charlotte Sectional

Fees:

Deicing I, Deicing IV, GPU, Hangar, International Trash, Lavatory, Overnight, Potable Water, Ramp

- Communication Freqs:
- 126.15 App
- 135.6 BANKR STAR
- 124.0 BARMY DP
- 120.5 BEAVY DP (RWY 36L, 36C)
- 124.0 BEAVY DP (RWY 18L, 18R, 18C, 36R)
- 120.5 BOBZY DP
- 125.35 BTSEY STAR
- 126.15 CHSLY STAR
- 120.05 CLASS B (120-295 8000 FT & BLW)
- 120.5 CLASS B (246-074 ABV 8000 FT)
- 124.0 CLASS B (075-245 ABV 8000 FT)
- 128.325 CLASS B (001-119 8000 FT & BLW)
- 134.75 CLASS B (296-360 8000 FT & BLW)
- 127.15 Clearance Delivery
- 121.15 D-ATIS (ARR)
- 132.1 D-ATIS (DEP)
- 121.5 Emergency



- Communication Freqs:
- 120.5 KNIGHTS DP(FLYYN, CEGAL TRANSITIONS RWY 36L, 36C, 36R)
- 124.0 CHARLOTTE DP(BUCKL, GANTS, LILLS & RUNIE TRANSITIONS.)
- 120.5 CHARLOTTE DP(HARAY & PITY TRANSITIONS. RWY 36L, 36C)
- 120.05 KNIGHTS DP(FLYYN, CEGAL TRANSITIONS, 18L, 18C, 18R)
- 128.325 KNIGHTS DP(PEKNN, LILLS, HAMLN, ANDYS TRANSITIONS)
- 120.05 KNIGHTS DP(DEBIE, NEANO TRANSITIONS)
- 124.0 CHARLOTTE DP(RWY 18L, 18R, 18C, 36R)
- 128.325 App/Dep IC(001-119 8000 FT & BLW)
- 134.75 App/Dep IC(296-360 8000 FT & BLW)
- 124.0 KWEEN DP(RWY 18L, 18R, 18C, 36R)
- 120.5 App/Dep IC(246-074 ABV 8000 FT)
- 120.5 KWEEN DP(RWY 36L, 36C)
- 121.8 Ground Control(WEST)
- 133.35 Tower(RWY 18R/36L)
- 124.0 KERMIT DP(055-235)
- 126.4 Tower(RWY 18C/36C)
- 125.35 LIINN STAR
- 126.15 MLLET STAR
- 126.15 RASLN STAR
- 135.6 JONZE STAR
- 135.6 UNARM STAR
- 120.5 JOJJO DP
- 120.5 KRITR DP
- 120.5 WEAZL DP
- 120.05 App/Dep IC(120-295 8000 FT & BLW)
- 124.0 ICONS DP(RWY 18L, 18R, 18C, 36R)
- 124.0 App/Dep IC(075-245 ABV 8000 FT)
- 120.5 ICONS DP(RWY 36L, 36C)
- 128.325 KNIGHTS DP(055-235)
- 121.9 Ground Control(EAST)
- 120.5 KERMIT DP(235-055)
- 118.1 Tower(RWY 18L/36R)
- 125.35 FILPZ STAR
- 126.15 MAJIC STAR
- 125.35 PARQR STAR
- 126.15 STOCR STAR
- 135.6 JOOLS STAR
- 120.5 ESTRR DP
- 124.0 KILNS DP
- 124.0 LILLS DP
- 122.95 UNICOM

Fuel:

100LL Low-Lead, Jet A

Phone:

704-359-4000

Weather:

704-255-5973 (ASOS)

FBO's Summary:

Wilson Air Center

Location: SE

Phone: 704-359-0440; Freq: ARINC: 129.400; Hours: 01/01-12/31, Mon-Sun, 00:00-00:00;

Other (Non-FBO) Businesses Summary:

Jet Logistics Technical Services, LLC

Location: E

Phone: 919-840-0555; Hours: 01/01-12/31, Mon-Sun, 00:00-00:00;

Aviation Institute of Maintenance - Charlotte, NC

Phone: 980-785-0700; Hours: 01/01-12/31, Mon-Thu, 08:00-20:00; 01/01-12/31, Fri-Fri, 08:00-17:00; 01/01-12/31, Sat-Sat, 09:00-13:00;



Notes:

Year-round, 7 Days a Week, All
Acft with Wingspan Gtr Than 118 Ft Use Judgmental Oversteer Instead of Cockpit Over
Cntrln Steering Entering and Exiting Rwy 18L/36R.
Airplane Design Group-V and Abv Acft are Prohibited Fm Dep Rwy 18L.
All Acft are Prohibited Fm Exiting Rwy 36R Sebd At Twy R.
Be Alert for Flocks of Migratory Birds on & In vicinity of Arpt.
Clt Ramp, Non-Movmt Area, is Ctld Ramp; CTC Ramp Ctl Prior to Entering.
Dual Taxi between Dep Call Spots 11/12 and 13N/13S Rstrd to One Acft Less Than 214
Ft and One Acft Less Than 118 Ft or Two Acft Less Than 171 Ft.
Dual Taxi between Dep Call Spots 22/23 and 24N/24S Rstrd to Acft with Wingspans Less
Than 118 Ft.
Group III Acft with A Wingspan Gtr Than 79 Ft are Prohibited Fm Making A Nbnd Turn
Onto Twy C When Taxiing Wb on Twy A.
Group III Acft with A Wingspan Gtr Than 79 Ft are Prohibited Fm Making A Sbnd Turn
Onto Twy C When Taxiing Nwbnd on Twy R.
Group Iv Acft with A Wingspan Gtr Than 118 Ft are Prohibited Fm Exiting Rwy 18L/36R At
Twy C10.
Group Vi Acft with A Wingspan Gtr Than 214 Ft (65M) are Prohibited on Twy M Between
the Trml Ramp and Twy C, As Well As Twy C North of Twy M.
Military: Ang: CTC Comd Post 30 Min Prior Ldg. Amops/Comd Post - 292.25 (Call
Newsreel).
Rwy Sfc Cond Info Durg Duty Hrs Phone Ang Operations V583-9177/9144 or Airborne
292.2.
Rwy Status Lgts in Opr.
Successive or Simultaneous Departures from Rwy 18L and Rwy 18C are Approved with
Course Divergence Beginning No Further Than 4 Miles from End of Rwy.
Trml Ramp Blue Txl At Spot 28S between Concourse D & E Alley Max Wingspan 118 Ft.
Trml Ramp Blue Txl from Spot 26N to Spot 27W Max Wingspan 118 Ft.
Trml Ramp Blue Txl from Spot 29W to Spot 34S Max Wingspan 82 Ft.
Trml Ramp Orange Txl At Spot 28N Between Concourse D & E Alley Max Wingspan 94
Ft.
Trml Ramp Orange Txl from Spot 26S to Spot 27E Max Wingspan 118 Ft.
Trml Ramp Orange Txl from Spot 29E to Spot 34N Max Wingspan 82 Ft.
Trml Ramp Yellow Txl from Spot 29C to Spot 33C Max Wingspan 118 Ft.
Twy C from the Approach of Rwy 18L to Twy J and Twy M from the Apron to Rwy
18L/36R Rstrd to 15 Mph or Less with Wingspan 171 Ft and Gtr.
Twy C10 Rstrd to Acft with Wingspan Less Than 171 Ft When Exiting Rwy.
Twy C10 Unusbl for Txdg Onto Rwy 18L/36R.
Twy C4 and C6: When Taxiing Aircraft with Cockpit to Main Gear Distance Greater Than
90 Ft, Pilot Must Perform Judgmental Oversteering Instead of Cockpit Over Centerline
Steering.
Twy D, Restricted to 15 Mph or Less with Wingspan 171 Ft and Greater.
Pcr Value: 1009/R/C/W/T
Engineered Materials Arresting Gear System (Emas) 255 Ft in Length by 170 Ft in Width At
the Departure End of Rwy 36R.
Pcr Value: 1076/R/D/W/T
Pcr Value: 627/R/C/W/T
Liquid Oxygen Also Avbl.
A++(Mil), 100 & O-156 Avbl.

