

KCVH

Hollister Muni
Hollister, CA

3.00 mi N of city N36 53.6008' W121 24.6164' Mag Var: 15E

Nav aids:

Type:	ID:	Morse:	Frequency:	Radial:	Distance:
VORTAC	SNS	... _	117.3	017	17 nm
DME	WVI	114.25	099	18 nm
VORTAC	PXN	112.6	274	32 nm

Traffic Patterns (FAA):

TPA for Helicopters 500' AGL
Left: 06,24,13,31

Runways:

Name:	Dimensions:	Material:	Condition:	Treatment:
06/24	3149X100	asphalt	good	no treatment
<i>Hill; 1700' from end; 100' Right of center; 65' high; 23:1 clearance slope; Road; 510' from end; 0' Both-Sides of center; 15' high; 20:1 clearance slope;</i>				
13/31	6350X100	asphalt	good	no treatment

Lighting:

Actvt REIL Rwy 24, 13, & 31; VASI Rwy 24; PAPI Rwy 13 & 31; MIRL Rwy 06/24 & 13/31 - CTAF.

Charts: NACO: San Francisco Sectional

Fees: After Hours, GPU, Lavatory, Overnight

Fuel: 100LL Low-Lead, Jet A

Phone: 831-636-4365

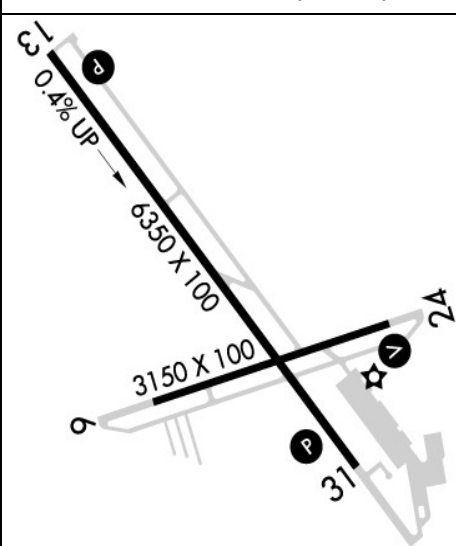
Weather: 831-636-4394 (AWOS-3)

Clearance Delivery Phone: 916-361-3748;

Communication Freqs:

124.525 App/Dep
120.425 WX
123.0 CTAF
123.0 UNICOM

Elevation: 231 ft (70.4 m)



Notes:

Year-round, 7 Days a Week, 0800-1700
Caution - Watch for Fire Fighting Acft May Thru Oct.
For Clearance Delivery Contact Norcal Approach at 916-361-3748.
Glider Activity on and In vicinity of Arpt.
Model Acft Club Conducting Flt Operations 3 Miles Wnw of Airport Heading of 290 Degrees
Fm Airport Surface to 500' AGL.
Recommend Pilots to Begin Ry 31 Takeoff Roll At or Beyond the Thld (Past Taxiway B).
Fax (831)636-4366.
Fuel Avbl 24 Hrs Credit Card Lock System.

FBO's Summary:

Hollister Jet Center, Inc

Location: SE
Phone: 831-637-9100; Hours: 01/01-12/31, Sun-Sat, 08:00-17:00;

Other (Non-FBO) Businesses Summary:

Hollister Soaring Center, LLC

Phone: 831-636-3799; Hours: 01/01-12/31, Fri-Sun, 08:00-17:00;

Sparrowhawk Aviation

Phone: 209-321-8108; Hours: By Appointment

