

# KDAB

## Daytona Beach Intl Daytona Beach, FL

3.00 mi SW of city N29 10.7945' W81 3.4825' Mag Var: 05W

### Nav aids:

Type:	ID:	Morse:	Frequency:	Radial:	Distance:
VORTAC	OMN	— — —	112.6	159	8 nm
VORTAC	ORL	— — —	112.2	021	41 nm
VOR/DME	SGJ	... — —	109.4	169	49 nm

### Traffic Patterns (FAA):

TPA for Lgt Acft 965' AGL  
TPA for Hi Per Acft 1365' AGL  
Right: 25R,07R Left: 07L,25L,16,34

### Runways:

Name:	Dimensions:	Material:	Condition:	Treatment:
<b>07L/25R</b>	10500X150	asphalt	good	grooved
Road; 790' from end; 500' Left of center; 15' high; 39:1 clearance slope; Trees; 2370' from end; 230' Left of center; 43' high; 50:1 clearance slope;				
<b>07R/25L</b>	3195X100	asphalt	poor	no treatment
Trees; 1580' from end; 185' Left of center; 55' high; 25:1 clearance slope; Trees; 1485' from end; 105' Left of center; 42' high; 30:1 clearance slope;				
<b>16/34</b>	6001X150	asphalt	fair	grooved
Trees; 1630' from end; 275' Left of center; 42' high; 34:1 clearance slope; Trees; 1130' from end; 400' Left of center; 46' high; 20:1 clearance slope;				

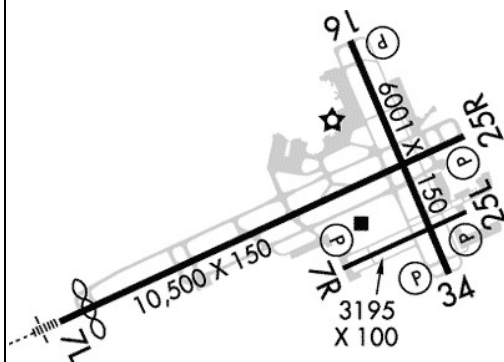
### Tower:

Primary Approach Control Hrs: 24  
Primary Depart. Control Hrs: 24  
Tower Hrs: 24  
Said In Use. Operate Transponders With Altitude Reporting Mode And Ads-B (If Equipped)  
Enabled On All Airport Surfaces.

### Communication Freqs:

118.85 App (N 4000-7500)  
125.35 App (S 3500 FT & BLW)  
125.725 App (8000-11000 FT)  
127.075 App (S 4000-7500)  
125.8 App IC (N 3500 FT & BLW)  
132.875 ATIS  
125.35 CLASS C (S 3500 FT & BLW)  
125.8 CLASS C (N 3500 FT & BLW)  
119.3 Clearance Delivery  
121.5 Emergency  
121.9 Ground Control  
118.85 LAMMA DP  
118.85 ROYES DP  
120.7 Tower  
118.85 TTHOR STAR  
122.95 UNICOM

Elevation: 34 ft (10.4 m)



**Charts:** NACO: Jacksonville Sectional

**Fees:** After Hours, After Hours, Facility, GPU, GPU, Lavatory, Lavatory, Overnight, Overnight,

**Fuel:** Ramp  
FULL Low-Lead, Jet A

**Phone:** 386-248-8030

**Weather:** 386-232-5134 (ASOS)

### Notes:

Year-round, 7 Days a Week, All  
US Customs User Fee Arpt.  
Airfield Sfc Conds are not Mntd between the Hrs of 0000-0400.  
All Helo Operations Expc Twy W between Twy A & Rwy 16 Approach End Clsd to Rotary  
Wing Acft with Rotar Span More Than 50 Ft Exc 1 Hr. Prior Permission Required (386)  
527-0657.  
All Mil Operations Req 24 Hr. Advnd Cdn with Airport Operations - Prior Permission  
Required (386) 527-0657.  
E End of Twy S is Non-Movement Area.  
Hvy Bird Activity Over Landfill Located 3.5Nm Southwest of the Airfield.  
Hvy Migratory Bird Act on & In vicinity of Arpt.  
Incrd Drone Act Northeast of Arpt.  
Ppr for Daytona Beach Speedway Low Approach or Fly-Over. CTC Atc for Pmsn.  
Rotor Wing Hel Must Grnd Taxi; If Unabl Use Ctn Durg Hover Taxi.  
Rwy 07L Lead-Off Lines for Twy P3 and Twy P4 for Group I Acft Only with Wingspan of  
Less Than 49 Ft.  
Twy "N" N of Ry 7L-25R Can be Mistaken for the Ry & Approach Environment.  
Twy C1 Clsd to Acft Wingspan More Than 119 Ft; Twy W Clsd to Acft Wingspan More  
Than 119 Ft; Twy W3 Clsd to Acft Wingspan More Than 79 Ft.  
Twy E Rstrd to 22000 Lbs Max Crtyd Gross Tkof Weight; Twy P Rstrd to 190500 Lbs  
Max Crtyd Gross Tkof Weight.  
Twy W between Rwy 16 Approach End & Twy A Clsd to Mil Hel & Hover Taxi Ops.  
Twy W between Twy A & Rwy 16 Approach End Clsd to Rotary Wing with Rotar Span  
More Than 50 Ft Exc 1 Hr Prior Permission Required - 386-527-0657.  
US Custs Ramp Rstrd Group II Acft of Wingspan 79 Ft or Less.  
Use County Fly Quiet Proc or Rcnd Noise Abatement Proc - Amgr.  
First 2300 Ft Rwy 7L Concrete on 50 Ft Wide Keel Section.  
Pcr Value: 650/R/A/W/T  
Outer Edges of Pavement Uneven.  
Pcr Value: 90/F/C/X/T  
Sked Acr Operations More Than 9 Pax Seats or Unsked Acr At Least 31 Pax Seats Na.  
Pcr Value: 420/F/A/X/T  
Rwy 07L Approach Slp 50:1 to Dsplcd Thr.  
Papi Unusbl Byd 5 Deg Left & Right of Cntrl.

### FBO's Summary:

#### Yelvington Jet Aviation, Inc.

Location: SW  
Phone: 386-257-7791; Freq: ARINC: 129.700; Hours: 01/01-12/31, Mon-Fri, 07:00-20:00;  
01/01-12/31, Sat-Sun, 08:00-19:00;

#### Sheltair Aviation Services

Location: NE  
Phone: 386-255-0471; Freq: ARINC: 130.100; Hours: 01/01-12/31, Sun-Sat, 05:30-22:00;

#### ATP Jet Center

Location: SE  
Phone: 386-385-8880; Hours: 01/01-12/31, Sun-Sat, 08:00-20:00;



Other (Non-FBO) Businesses Summary:

Phoenix East Aviation

Location: NE  
Phone: 386-258-0703; Hours: 01/01-12/31, Sun-Sat, 08:00-17:00;

Daytona Aircraft Services, Inc.

Location: NE  
Phone: 386-255-2049; Hours: 01/01-12/31, Mon-Fri, 08:30-17:00;

Embry-Riddle Aeronautical University - Daytona

Location: NE  
Phone: 386-226-6100; Hours: 01/01-12/31, Mon-Fri, 08:00-17:00;

Air America Flight Center, LLC

Location: SE  
Phone: 386-252-3600; Hours: 01/01-12/31, Sun-Sat, 08:00-19:00;

ATP Flight School

Location: NW  
Phone: 904-595-7950; Hours: 01/01-12/31, Mon-Fri, 08:00-21:00; 01/01-12/31, Sat-Sun, 08:00-17:00;

Daytona Jets

Location: SE  
Phone: 855-322-5387; Hours: 24/7

AOG MX, LLC

Location: E  
Phone: 386-566-4821; Hours: 01/01-12/31, Mon-Fri, 08:00-17:00;

Embry-Riddle Aeronautical University - Worldwide

Location: NE  
Phone: 800-522-6787; Hours: 01/01-12/31, Mon-Fri, 08:00-17:00;

Aguayo Aerosports

Phone: 386-295-0382; Hours: By Appointment

PEA Phoenix East Aviation

Phone: 386-237-6870; Hours: 1/2-12/31, Sun-Sat, 06:00-23:00;

