

KDSM

Des Moines Intl
Des Moines, IA

3.00 mi SW of city N41 32.0384' W93 39.7843' Mag Var: 01E

Nav aids:

Type:	ID:	Morse:	Frequency:	Radial:	Distance:
VOT	DSM —	109.2	220	0 nm
VORTAC	DSM —	117.5	347	6 nm
VOR/DME	TNU	- .- ..	112.5	236	29 nm

Traffic Patterns:

No TPA reported. Assume 1,000 AGL.
Right: 31 Left: 05,23,13

Runways:

Name:	Dimensions:	Material:	Condition:	Treatment:
05/23	9004X150	concrete	excellent	no treatment
<i>Pole; 2322' from end; 375' Left of center; 67' high; 34:1 clearance slope;</i>				
13/31	9001X150	concrete	excellent	grooved

Tower:

Primary Approach Control Hrs: 24
Primary Depart. Control Hrs: 24
Tower Hrs: 24
Contact Gnd Control On 121.9 Prior To Pushback On The Terminal Apron. Advise Tower If De-icing Is Required.

Charts: NACO: Omaha Sectional

Fees: Deicing I, Deicing IV, Facility, GPU, GPU, Handling, Infrastructure, Lavatory, Lavatory, Overnight, Preheat

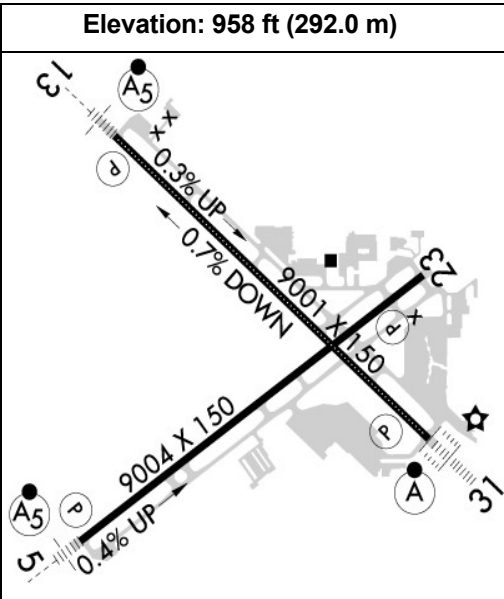
Fuel: 100LL Low-Lead, Jet A

Phone: 515-256-5100

Weather: 515-218-1035 (ASOS)

Communication Freqs:

135.2	App(S)
120.45	App(S) Dep(S)
123.9	App/Dep IC
119.55	WX
119.55	ATIS
123.9	CLASS C
120.45	CLASS C(S)
135.2	CLASS C(S)
134.15	Clearance Delivery
121.5	Emergency
121.9	Ground Control IC
118.3	Tower IC
122.95	UNICOM



Notes:

Year-round, 7 Days a Week, All
Flight Notification Service (Acdus) Avbl Mon-Fri 0830-1700. for Sat; Sun; Hols & Night
Customs Svc Make Appointments Mon-Fri 0830-1700. At Least 3 Hr Advance Notice Rqrd.
A321 Aircraft Ltd to 190,000 Lbs on Rwy 5-23 and Twy P. A321 Exceeding 190,000 Lbs
Wo Airport Authority Waiver Req Air Traffic Control Tower Prvd 13-31.
Acr Prior to Term Pushback - Gc 121.9.
Arng Ramp Avbl for Mil and Mil-Contracted Acft for Offl Bus Only with Ltd Support. Ppr;
CTC Dsn 261-8360/8361, C515-261-8360/8361. FBO Will Provide Contract Fuel. Mil Crews
Can CTC Hawki on 252.9
Birds on & In vicinity of Arpt.
Contr Fuel - 515-256-5330.
Cross Bleed Engine Starts on Air Carrier Ramp Prohibited.
lang South Ramp Pcn 78 R/B/W/T. lang West Ramp Pcn 87 R/B/W/T.
Informal Noise Abatement Procedures in Effect. Expect Atc to Assign Preferred Ry.
Max Acft Wt South Ga Aprn 170,000 Lbs All Other FBO Aprn 80,000 Lbs.
Modern Aviation FBO Lctd At North Ga Apron.
Rwy 05 Approach End Has Ltd Vis from the Twr. Twr Cannot Easily Id If an Acft is Over
the Hold Short Line At Twy P7. Rwy 05 Arrivals - Use Ctn and Ensure You are Correctly
Lined Up with Rwy 05 and not Twy P.
Terminal Apron De-Ice Spot N2 and Associated Taxilane Limited to Adgii Unless Coordinated
with Ids 129.875.
Terminal Apron Taxilane Adg III Ac Only, Adg Iv Ac At Gate A4 Only.
Trml Apron Taxilane Adg III (Acft Wingspan Less Than 118 Ft) Only, Adg Iv (Acft Wingspan
Less Than 172 Ft) Acft At Gate A4 Only.
Updtd: Sked A321 Acft Over 200,000 Lbs Rqr an Overweight Acft Pmt; CTC Airport
Authority 515-256-5000
Use Caution When Lndg Over Raised Lights in the Overruns and Rwy Thlds At Dsm.
Executive Director
Pcr Value: 696/R/D/W/T
Pcr Value: 696/R/D/W/T
Papi Unusbl Byd 9 Degs Right of Cntrln.

FBO's Summary:

Modern Aviation

Location: N
Phone: 515-285-6551; Freq: ARINC: 130.570; Hours: 01/01-12/31, Sun-Sat, 00:00-23:59;

Signature Flight Support

Location: NE
Phone: 515-256-5330; Freq: ARINC: 131.000; Hours: 24/7

Other (Non-FBO) Businesses Summary:

Des Moines Flying Service, Inc.

Location: NE
Phone: 515-256-5300; Hours: 01/01-12/31, Mon-Fri, 08:00-16:30;

Aero America

Location: SW
Phone: 515-865-2790; Hours: 01/01-12/31, Mon-Sun, 07:00-22:00;

US Flight Co.

Location: NE
Phone: 515-650-5558; Hours: 01/01-12/31, Mon-Sat, 08:00-20:00;

Vertical Vision Flight Academy

Phone: 833-359-3742; Hours: 1/1-12/31, Mon-Fri, 09:00-18:00;

