

KGRR

Gerald R Ford Intl
Grand Rapids, MI

6.00 mi SE of city N42 52.8500' W85 31.3683' Mag Var: 06W

Nav aids:

Type:	ID:	Morse:	Frequency:	Radial:	Distance:
VOR/DME	VIO	...- ..	115.95	353	6 nm
VOR/DME	PMM	..- .	112.1	046	36 nm
DME	AZO	..- ..	109.0	002	39 nm

Traffic Patterns:

No TPA reported. Assume 1,000 AGL.
Left: 08L,26R,08R,26L (Assumed Left: 17,35)

Runways:

Name:	Dimensions:	Material:	Condition:	Treatment:
08L/26R	5001X100	asphalt	good	grooved
08R/26L	10001X150	concrete	good	grooved
<i>Building; 1170' from end; 260' Left of center; 24' high; 40:1 clearance slope;</i>				
17/35	8501X150	concrete	good	grooved

Tower:

Tower Hrs: 0530-0000
Apch/Dep Svc Prvdd By Chicago Artcc (Zau) On Freqs 128.4 (Grand Rapids Rcag) When Great Lakes Apch Ctl Clsd.

Lighting:

When Air Traffic Control Tower Clsd Actvt MALSR Rwy 08R, 26L, & 35; REIL Rwy 08L, 26R, & 17; HIRL Rwy 08R/26L & 17/35; MIRL Rwy 08L/26R - CTAF.

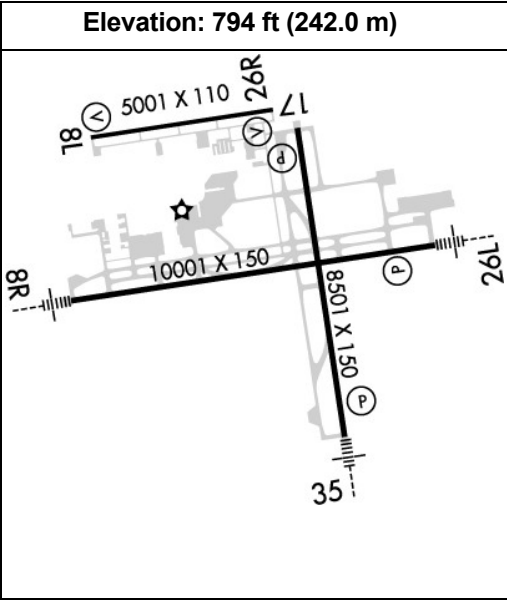
Charts: NACO: Chicago Sectional

Fees: After Hours, Deicing, Deicing I, Deicing IV, GPU, Handling, Infrastructure, Lavatory, Overnight

Fuel: 100LL Low-Lead, Jet A

Communication Freqs:

124.6	App/Dep (NORTH)
128.4	App/Dep IC (SOUTH)
118.725	ATIS
124.6	CLASS C (NORTH)
128.4	CLASS C (SOUTH)
119.3	Clearance Delivery
135.65	CTAF
121.5	Emergency
121.8	Ground Control
135.65	Tower
122.95	UNICOM



Phone: 616-233-6000

Weather: 616-986-5029 (ASOS)

Notes:

Security Directive SD-8G
Year-round, 7 Days a Week, All
Mon-Fri Two Hrs Prior Permission Required for Customs Call 616-942-5245, Pager 616-249-5380. Call Prior to 1600 on Preceding Friday for After Hours Svc.
Air Carrier Apron Closed to Ga Aircraft.
Airport Psnl Will Mnt CTAF When Air Traffic Control Tower is Clsd.
Birds on & In vicinity of Arpt.
Ctc FBO for Their Hrs of Opn.
For Cd When Twr Clsd CTC Great Lakes Approach at 269-459-3344, When Approach Clsd CTC Chicago ARTCC at 630-906-8921.
Noise Abatement Procedures: Ry 08R Dep on Ry Heading Until Reaching the Hwy East of Arpt; Ry 26L on Approach to Airport Turn Final At Hwy East of Arpt.
Ppr for Acft with 171 Ft Wingspan or Larger.
Pushback Advisories on the Terminal Ramp are not Provided by Atc.
Twy F North of Twy V, Twy J between Twy F & Twy J3 & Twy G Clsd to Aircraft Over 100,000 Lbs; Twy F South of Twy V & Twy J East of Twy F & West of Twy J3 Clsd to Acft Over 47,000 Lbs.
Twy R North of Twy D, Twy Y North of Twy D, Twy Z North of Twy D and Twy N are Non-Movement Areas.
Twy Y 400 Ft North of Twy D Clsd to Acft Over 100,000 Lbs.; Twy R North of Twy D Clsd to Acft Over 175,000 Lbs.

FBO's Summary:

Signature Flight Support

Location: W
Phone: 616-336-4711; Freq: ARINC: 130.525; Hours: 01/01-12/31, Sun-Sat, 06:00-22:00;

Avflight Grand Rapids

Phone: 616-226-4477; Freq: ARINC: 129.820; Hours: 24/7

Other (Non-FBO) Businesses Summary:

Mayday Avionics, Inc.

Location: W
Phone: 616-957-4920; Hours: 01/01-12/31, Mon-Fri, 07:00-17:00;

Signature TECHNICAir

Location: N
Phone: 616-336-4736; Hours: 01/01-12/31, Mon-Fri, 07:00-01:30;

West Michigan Aviation Academy

Location: NW
Phone: 616-446-8886;

Immaculate Flight

Location: N
Phone: 888-858-5123; Hours: By Appointment

