

KIMT

Ford
Iron Mountain Kingsford, MI

3.00 mi W of city N45 49.1014' W88 6.8727' Mag Var: 02W

Nav aids:

Type:	ID:	Morse:	Frequency:	Radial:	Distance:
DME	IMT	.. _ _ _	111.2	324	0 nm
DME	MNM	_ _ _ . _	109.6	333	43 nm
VOR/DME	ESC _ _ .	113.55	278	43 nm

Traffic Patterns (FAA):

TPA for Jet/Turbo-Jet & Prop Acft Over 12500Lbs is 1500' AGL
Left: 01,19,13,31

Runways:

Name:	Dimensions:	Material:	Condition:	Treatment:
01/19	6502X150	asphalt	good	porous friction course
13/31	3810X75	asphalt	fair	porous friction course

Lighting:

Actvt MALSR Rwy 01; REIL Rwy 19 & 31; PAPI Rwy 19 & 31; HIRL Rwy 01/19; MIRL Rwy 13/31 - CTAF.

Charts: NACO: Green Bay Sectional

Fees: After Hours, Deicing, Facility, GPU, Hangar, Landing, Lavatory, Ramp

Fuel: 100LL Low-Lead, Jet A

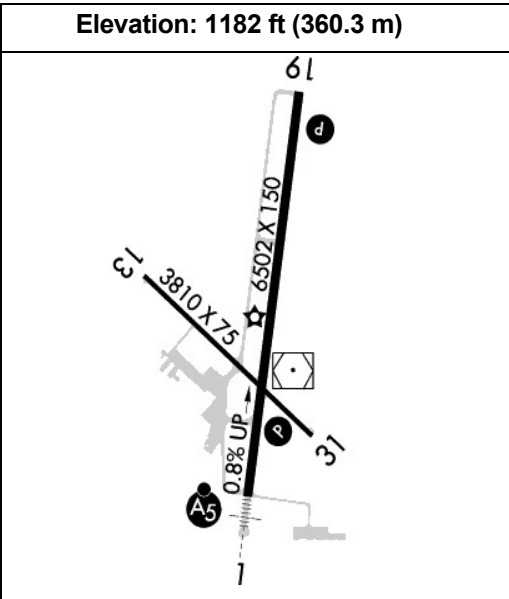
Phone: 906-774-4870

Weather: 906-774-1999 (ASOS)

Communication Freqs:

119.025 WX
122.8 CTAF
122.8 UNICOM

Elevation: 1182 ft (360.3 m)



Notes:

Year-round, 7 Days a Week,0530-2200
Unicom Ireg Mntd.
48 Hrs Prior Permission Required for Unsked Acr Operations Gtr Than 30 Pax Seats - Call Airport Manager Cell.
Arff Crews Mnt CTAF/Unicom Drg All Acr Ops.
Deer, Coyotes, & Birds on & In vicinity of Arpt.
Field Conds Unmon Oct 15 Thru Apr 1 between 2100-0600.
Snow Removal Crews Mnt CTAF/Unicom Drg All Acr Operations to Prvd Sfc Cond Rprts.
Acr Operations Gtr Than 9 Pax Seats Na If not Wi 15 Mins of Skedd Arr/Dep Time Exc by Prior Cdn with Airport Manager & Cfmn Arff is Avbl Prior to Tkof/Ldg.
Cell 906-201-1866.
Clsd to Skedd Acr Operations Gtr Than 9 Pax Seats or Unsked Acr Operations Gtr Than 30 Pax Seats.

FBO's Summary:

Kubick Aviation Services, Inc.

Location: SW
Phone: 906-779-5500; Hours: 01/01-12/31, Mon-Fri, 07:00-20:00; 01/01-12/31, Sat-Sun, 07:00-17:00;

