

KJAC

Jackson Hole
Jackson, WY

7.00 mi N of city N43 36.4402' W110 44.2649' Mag Var: 13E

Nav aids:

Type:	ID:	Morse:	Frequency:	Radial:	Distance:
VOR/DME	JAC	— — — —	115.4	185	1 nm
VOR/DME	DNW	— — — —	117.2	218	22 nm

Traffic Patterns:

No TPA reported. Assume 1,000 AGL.
Left: 01,19

Runways:

Name:	Dimensions:	Material:	Condition:	Treatment:
-------	-------------	-----------	------------	------------

01/19	6300X150	asphalt	excellent	grooved
-------	----------	---------	-----------	---------

Road; 249' from end; 505' Left of center; 10' high; 5:1 clearance slope;

Tower:

Tower Hrs: 0700-2130
Apch/Dep Ctl Svc Prvdd By Salt Lake Artcc (Zlc) On Freqs 133.25/285.6 (Jackson Rcag).
Atct Operated By Cerco.

Lighting:

When Air Traffic Control Tower Clsd Actvt Mals Rwy 01 & 19; HIRL Rwy 01/19; Rcls Rwy 01/19; Twy Lgts; Wdi - CTAF.

Charts: NACO: Salt Lake City Sectional

Fees: Deicing I, Deicing IV, GPU, Handling, Hangar, Landing, Lavatory, Overnight

Fuel: Jet A, 100LL Low-Lead

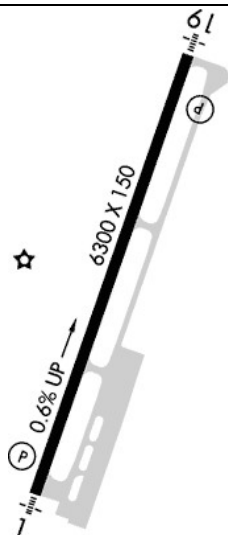
Phone: 307-733-7695

Weather: 307-739-9108 (AWOS-3PT)

Communication Freqs:

118.075	CTAF
120.625	D-ATIS
124.55	Ground Control
118.075	Tower
122.95	UNICOM

Elevation: 6451 ft (1966.3 m)



Noise Abatements:

RnWY:	Arcrft:	App/Dep:	Noise Abatement:
01	All	App	RWY 01 is the preferred arrival runway. Plan on a right downwind for 01 when approaching from the NW through the NE and stay E of HWY 89. Approaches from the S, plan on a straight in to 01. Maintain 8,000 feet until 4 miles on final
19	All	App	Avoid overflight of GTNP as much as possible. When approaching from the north, stay east of HWY 89 until reaching Moose on 4 mile final. Plan to enter on left downwind for RWY 19 when approaching from all other directions
01	All	Dep	Turn right to stay east of HWY 89 as soon as practical after takeoff. Avoid climbs to the northwest of GTNP
19	All	Dep	RWY 19 is the preferred departure RWY. Make a left 45° turn as soon as practical after takeoff to avoid overflight of the residential area. Proceed on course after reaching 8,500 MSL. Avoid northwest climbs over GTNP
All	All	App	IFR arrivals are urged to request visual approaches and follow these noise abatement procedures whenever weather conditions permit
All	All	Dep	IFR Departures IFR departures during VFR conditions are urged to utilize these noise abatement procedures during climbout. Please ask TWR or SLC Center for VFR noise abatement climb to intercept your IFR route whenever weather conditions permit

Notes:

Preferred ARR RWY
Preferred DEP RWY
Year-round, 7 Days a Week, 0700-2130
35'-53' Trees 700'-800' West of Thr Ry 01.
Acft Pushing Back Fm Trml Cause Cgstr, Making A2 Unavbl. Coord Rwy Exits with Twr.
Acft That Fail to Touch Down Within the First Third of Ry 01/19 Sometimes Fail to Stop on the Ry and are At Risk for A Ry Excursion.
Balloon Operations in Vicinity of Airport, W and Sw, May-Oct.
Cold Temperature Airport. Altitude Correction Required At or Below -22C.
Deicing Pad Located At North End of Twy A.
For Cd If Una to CTC on FSS Freq, CTC Jac Twr Gnd At 124.55 Durg Nml Oprg Hrs.
Outside of Nml Oprg Hrs, CTC Salt Lake ARTCC at 801-320-2568.
For Public Health & Safety Flights, Contact Airport Manager @ 307-733-7682.
Hang Gliding Operations 9 Miles S of Airport Near Ski are & 9 Miles Ssw of Airport Along the Ridge.
Noise Abatement Procedures in Effect for Acft Departures on Rwy 19.
Paved 950X200 Ft Safety Area At the Dep End of Rwy 19; not Usbl for Per Calculations; Plowed & Broomed Durg Winter.
Possible Severe Winter Conditions from Nov-Apr; No Airport Info or Snow Removal Guaranteed During Hours of Non Attendance. 307-733-7682
Sage Grouse on & In vicinity of Airport Apr Thru Oct.
Leased from U S Park Service.
Pcr Value: 508/F/C/X/T

FBO's Summary:

Jackson Hole Aviation, LLC

Location: S
Phone: 307-733-4767; Hours: 01/01-12/31, Sun-Sat, 06:00-21:30;

