

2.00 mi SE of city    N30 12.3017'    W91 59.2650'    Mag Var: 03E

Type:	ID:	Morse:	Frequency:	Radial:	Distance:
VORTAC	LFT	... ..	109.8	017	1 nm
VOR/DME	LLA	... ..	114.95	028	38 nm
VORTAC	LSU	... ..	116.5	239	40 nm

No TPA reported. Assume 1,000 AGL.  
Right: 22R,04R,11 Left: 29 (Assumed Left: 04L,22L)

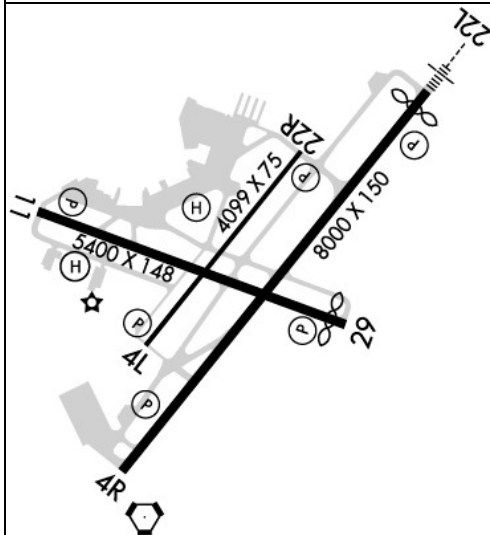
Name:	Dimensions:	Material:	Condition:	Treatment:
<b>04L/22R</b>	4099X75	asphalt	fair	no treatment
Tree; 996' from end; 83' Left of center; 27' high; 29:1 clearance slope;				
Tree; 2364' from end; 5' Right of center; 54' high; 40:1 clearance slope;				
<b>04R/22L</b>	8000X150	asphalt	good	grooved
Pole; 1843' from end; 325' Right of center; 49' high; 34:1 clearance slope;				
Trees; 1066' from end; 214' Right of center; 57' high; 36:1 clearance slope;				
<b>11/29</b>	5400X148	asphalt	good	grooved
Trees; 1082' from end; 134' Right of center; 30' high; 29:1 clearance slope;				
Tree; 1878' from end; 302' Right of center; 49' high; 34:1 clearance slope;				

Dusk-Dawn. When Air Traffic Control Tower Clsd Actvt MALSR Rwy 22L - CTAF; MIRL Rwy 04L/22R not Avbl.

**Fuel:** 100LL Low-Lead, Jet A

128.7	<i>App/Dep (211-019)</i>
121.1	<i>App/Dep IC (020-210)</i>
134.05	<i>WX</i>
134.05	<i>ATIS</i>
121.1	<i>CLASS C (020-210)</i>
128.7	<i>CLASS C (211-019)</i>
125.55	<i>Clearance Delivery</i>
118.5	<i>CTAF</i>
121.5	<i>Emergency</i>
121.8	<i>Ground Control</i>
118.5	<i>Tower</i>
122.95	<i>UNICOM</i>

**Elevation: 42 ft (12.8 m)**



Generated 6/12/2025 at  
<http://www.aopa.org/destinations/airports/KLFT/details>  
 Copyright 2025 Aircraft Owners and Pilots Association



Mil Ops Hrs: 0730-1600 WKDAYS EXCLDGD HOLDS.  
Primary Approach Control Hrs: 0530-2230  
Primary Depart. Control Hrs: 0530-2230  
Secondary Approach Control Hrs: 2230-0530  
Secondary Depart. Control Hrs: 2230-0530  
Tower Hrs: 0530-2230  
Apm/Dep Svc Prvdd By Houston Artcc (Zhu) On Freq  
When LaFayette Apch Ctl (Lft) Clsd.

**Weather:** 337-262-2757 (ASOS)

Year-round, 7 Days a Week, All  
155 Ft Oil Rig 1 Nm Southeast of Arpt.  
Atct Has Ltd Vis of North Prkg Ramp.  
Ctc Gnd Ctl Prior to Push Back Fm Terminal.  
For Cd If Una to CTC on FSS Freq, CTC Houston ARTCC at 281-230-5622.  
Migratory Birds on & In vicinity of Arpt.  
Rwy 11/29; Rwy 04L/22R & Rwy 04R/22L Lgtd Distance Remaining Signs.  
Taxilane A and All Prkg Ramps are Non-Movement Areas.  
Use Ctn Twr Blind Spots on Twy M East & West of Twy E.  
Ppr for Unscheduled Acr Operations with More Than 30 Psgr Seats Call Airport Manager  
337-703-4800.  
Rwy not Avbl for Acr Operations with More Than 30 Psgr Seats. Ry Clsd 2230-0530.  
Engineered Materials Arresting System (Emas) 223 Ft in Length by 170 Ft in Width Lctd At  
the Der 04R.  
Engineered Materials Arresting System (Emas) 300 Ft in Length by 170 Ft in Width Lctd At  
the Der 11.  
Engineered Materials Arresting System (Emas) 380.7 Ft in Length by 170 Ft in Width Lctd  
At the Der 22L.  
Engineered Materials Arresting System (Emas) 448 Ft in Length by 170 Ft in Width Lctd At  
the Der 29.  
Call 337-234-3100.

Location: N  
Phone: 337-234-3100; Hours: 24/7

**Other (Non-FBO) Businesses Summary:**

**Lafayette Aircraft Services**

Location: N  
Phone: 337-266-8991; Hours: 01/01-12/31, Mon-Fri, 08:00-17:00;

**Avionics Solutions, LLC**

Location: NW  
Phone: 337-443-9443; Hours: 01/01-12/31, Mon-Fri, 08:00-17:00;

**Owens Flight Training, LLC**

Location: E  
Phone: 337-534-4040; Hours: 01/01-12/31, Mon-Fri, 08:00-17:00;

**FlightSafety International**

Phone: 337-408-2900; Hours: By Appointment

**Acadian Pilot**

Location: N  
Phone: 337-291-2884; Hours: 01/01-12/31, Mon-Fri, 08:00-17:00; 01/01-12/31, Sat-Sun, 08:00-20:00;

**South Louisiana Community College**

Phone: 337-521-9000; Hours: By Appointment

