

4.00 mi E of city N40 46.6345' W73 52.3563' Mag Var: 12W

Nav aids:

| Type: | ID: | Morse: | Frequency: | Radial: | Distance: |
|---------|-----|-----------|------------|---------|-----------|
| VOR/DME | LGA | ••• —• —• | 113.1 | 217 | 0 nm |
| VOR/DME | TEB | —• —•• | 108.4 | 127 | 10 nm |
| VOR/DME | JFK | —• —• —• | 115.9 | 344 | 10 nm |

Traffic Patterns:

No TPA reported. Assume 1,000 AGL.
Left: 04 (Assumed Left: 22,13,31,H1)

Runways:

| Name: | Dimensions: | Material: | Condition: | Treatment: |
|---|-------------|-----------|------------|--------------|
| 04/22 | 7002X150 | asphalt | excellent | grooved |
| Building: 2950' from end; 400' Right of center; 80' high; 34:1 clearance slope; | | | | |
| 13/31 | 7002X150 | asphalt | excellent | grooved |
| Building: 2750' from end; 510' Right of center; 95' high; 26:1 clearance slope; | | | | |
| H1 | 45X45 | asphalt | excellent | no treatment |

Tower:

Tower Hrs: 24
(Class B Airspace) Expect To Leave And Re-Enter The Class B Airspace During Moderate To Heavy Arrival Periods.
Asde-X In Use. Operate Transponders With Altitude Reporting Mode And Ads-B (If Equipped)
Enabled On All Airport Surfaces.

Charts: NACO: New York Sectional

Fees: Landing, Parking

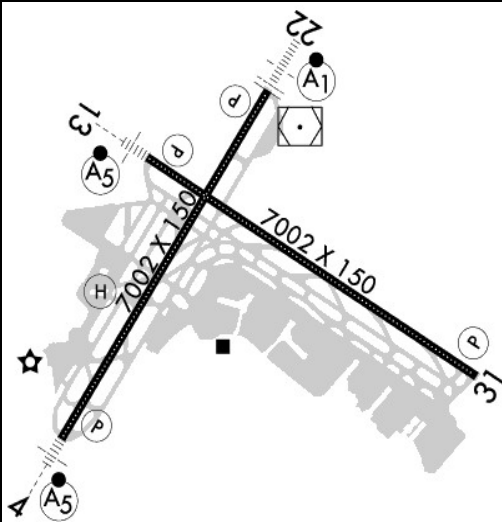
Fuel: 100LL Low-Lead, Jet A

Phone: 718-533-3401

Communication Freqs:

119.75 APPLE STAR
124.55 APPLE STAR
127.3 APPLE STAR
120.8 App
120.05 App(S)
124.95 App(S)
127.3 App(S)
128.8 App(S) (FINAL)
132.7 App(S)
135.2 CD PRE TAXI CLNC
125.7 CLASS B (071-142)
126.4 CLASS B (329-071)
127.6 CLASS B (270-328)
128.125 CLASS B (142-231)
128.55 CLASS B (231-270)
120.55 CLASS B(S) (329-071)
121.875 Clearance Delivery (HELICOPTER)
125.95 D-ATIS (ARR)
127.05 D-ATIS (DEP)

Elevation: 21 ft (6.4 m)



Communication Freqs:

126.05 CLASS B(NORTH, FREQS WITHIN 6 NM ARE TWR CNTRLD FREQS)
126.05 CLASS B(SOUTH) 121.7 Ground Control
127.675 Ground(S) 127.3 MILTON STAR
121.85 Ground(S) 127.3 KORRY STAR
120.8 NOBBI STAR 127.3 PROUD STAR
121.5 Emergency 124.45 Dep(S)
127.05 Dep(S) 122.95 UNICOM
118.7 Tower 120.4 Dep

Weather: 929-229-1994 (ASOS)

Notes:

Year-round, 7 Days a Week,All
Acft Operations & Twy Wt Rstrns Exist for Adg-III & Adg-Iv. Please CTC Lga Airport
Operations At 718-533-3700 for More Info.
B767-400 Acft Rstrd to 10 Kts on Twys Dd, Z, B & Aa.
Coded Transponder Rqrd. VFR Rsvn Info Avbl on Atis.
Flocks of Birds on & In vicinity of Arpt.
For Noise Abatement Rstrns Call 212-435-3782 Durg Nml Bus Hrs.
Mag Anomalies May Affect Compass Hdg When Using Extension Rwy 13 & 22 for Tkof.
Obst Sign Structure Unkn (39 AGL) 500 Ft E Rwy 4/22 Cntrln & 4800 Ft S Rwy 13/31
Cntrln.
Ovhd Pax Bridges on N Side of Terminal B Prvd 50 Ft Tail Hgt Clnc When on Taxilane
Cntrln.
Runway Status Lights in Operation.
Rwy 04/22: Northeast 1776 Ft of Rwy is A Deck Ovr Wtr; Rwy Friction May be Different
Than Rmng Ptn of Rwy Durg Wint Wx.
Rwy 13/31: Northwest 944 Ft of Rwy is A Deck Ovr Wtr; Rwy Friction May be Different
Than Rmng Ptn of Rwy Durg Wint Wx.
Ship Masts in Approach Rwy 31.
Special Air Tfc Rules-Part 93; High Density Arpt; Prior Rsvn Rqrd; See Aim.
Twys F & D West of Twy Bb Clsd to Acft with Wingspans in Excess of 125 Ft.
Twys G, P, R & U Concrete Deck Rstd to 5Kt Turns; 10Kts Straight.
Leasee. Property Owned by the City of New York.
Port Authority of New York and New Jersey.
Pcr Value: 530/F/A/X/T
Pcr Value: 577/F/B/X/T
+11 Ft Fence 245 Ft Right of Rwy End.
Engineered Materials Arresting System (Emas) 215 Ft in Length by 170 Ft in Width Lctd At
the Der 04.
Emas Partially Damaged Resulting in Reduced Arresting Capability. Engineered Materials
Arresting System (Emas) 327 Ft in Length by 170 Ft in Width Lctd At the Der 13.
Papi Rwy 13 Unusbl 8 Degs Left of Cntrln and 9 Degs Right of Cntrln.
Engineered Materials Arresting System (Emas) 272 Ft in Length by 170 Ft in Width Lctd At
the Der 22.
Engineered Materials Arresting System (Emas) 215 Ft in Length by 170 Ft in Width Lctd At
the Der 31.

FBO's Summary:

Modern Aviation

Location: W
Phone: 718-779-4040; Freq: ARINC: 129.700; Hours: 01/01-12/31, Sun-Sat, 06:00-23:59;



Other (Non-FBO) Businesses Summary:

FlightSafety International

Location: W
Phone: 718-565-4170; Hours: 01/01-12/31, Mon-Fri, 08:00-17:00;

Vaughn College of Aeronautics & Technology

Phone: 718-429-6600; Hours: By Appointment

