

KLGF

Laguna Aaf (Yuma Proving Ground) Yuma Proving Ground (Yuma), AZ

12.00 mi NE of city N32 51.8748' W114 23.5785' Mag Var: 13E

Nav aids:

Type:	ID:	Morse:	Frequency:	Radial:	Distance:
VORTAC	BZA	116.8	047	12 nm
VORTAC	BLH	117.4	143	48 nm

Traffic Patterns (FAA):

Tfc Pat: Rgt Tfc Rwy 06 & 36
 F/W 1700' MSL
 R/W 1100' MSL
 No Rgt Tfc Rwy 18
 Right: 06,36 Left: 24,18 (Assumed Left: H1,H2,H3)

Runways:

Name:	Dimensions:	Material:	Condition:	Treatment:
06/24	6043X100	asphalt	not reported	no treatment
18/36	6142X151	asphalt	not reported	no treatment
H1	40X40	asphalt	not reported	no treatment
H2	40X40	asphalt	not reported	no treatment
H3	40X40	asphalt	not reported	no treatment

Tower:

Tower Hrs: 0600-1600 MON-FRI, CLSD HOL, O/T BY NOTAM.
 Apch Ctl Svc Prvvd By Yuma Cerap On 124.7/371.975 (Yuma Rcag). Dep Ctl Svc Prvvd By Yuma Cerap On 125.55/282.325 (Yuma/A Rcag).

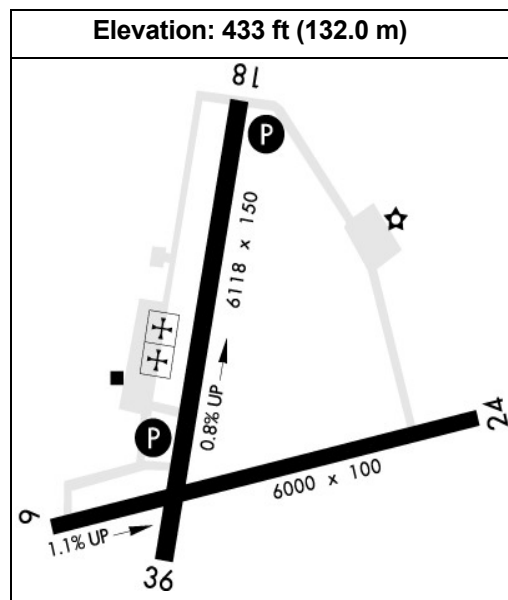
Lighting:

Actvt MIRL Rwy 18/36 - 126.2. PAPI Rwy 18 & 36 Opr Consly Durg Ops; Other Time on Req - Base Ops.

Charts: NACO: Phoenix Sectional

Communication Freqs:

128.225 ATIS
 126.2 CTAF
 121.8 Ground Control
 119.0 RANGE CTL
 126.2 Tower



Fuel: 100LL Low-Lead

Phone: 928-328-5028

Weather: (AWOS-3PT)

Clearance Delivery Phone: 982-269-9569;

Notes:

RESTRICTED. MILITARY AIRPORT. PRIOR PERMISSION REQUIRED. CONTACT BASE OPS MANAGER 928/328-2241, 928/328-2014

Clsd Hol

Year-round, Mon-Fri/0600-1600

CTAF 242.175

Ctn: C-130 & Lrg Trn Turn Around on Rwy Na Exc Prior Apvl for Emerg or Congestion.

Ctn: Operations on Cibola Range 1 Nm. Paja In vicinity of 5 Nm.

Ctn: Uas Operations Fm Laguna Army Airfield When Rstd Asp Actv; CTC Laguna Air Traffic Control Tower Prior to Entry.

Ctn: Wildlife & Coyotes on & In vicinity of Arpt; Spcly At Nglt.

For Clearance Delivery Contact Yuma CERAP Cd At 982-269-9569.

Fuel: 100LL, F24 Avbl 1340-2400Z Mon-Fri; Clsd Hol. Pol Avbl with 24 Hr Prior Permission Required for Tsnt. Contr Fuel - Avcard Only.

Jasu-5(Gpu) 3(59B2-1B).

Misc: Late Arr - Base Operations D899-2014/2241, 928-328-2014/2241.

Operations 0600-1600 Mon-Fri; Clsd Hol; Other Time by Notam.

Rstd: Clsd Field Operations Prior Permission Required - Base Operations or Laguna Ops.

Rstd: Offl Bus Only. Rstd Area 4 Nm E. Ovft of Housing Area 3 Nm Southwest Na. Tsnt

24 Hr Prior Permission Required - D899-2014/2241, C928-328-2014/2241.

Svc: Fuel, Lox Svc Avbl - Base Ops.

Tran Alert: Ltd Maint Svc Avbl.

