

KMCF

Macdill Afb
Tampa, FL

4.00 mi S of city N27 50.9607' W82 31.2732' Mag Var: 06W

Nav aids:

| Type: | ID: | Morse: | Frequency: | Radial: | Distance: |
|---------|-----|-----------|------------|---------|-----------|
| VORTAC | PIE | ..- . . | 116.4 | 117 | 9 nm |
| VOR/DME | SRQ | ... - - | 117.0 | 010 | 27 nm |
| VORTAC | LAL | ..- . -.. | 116.0 | 252 | 28 nm |

Traffic Patterns (FAA):

Tfc Pat: Rectangular 1100'
 Ovhd 1600'
 Drg VFR Cond Tkof & Tgl Mntr 1100' Til Der
 Heli 600'
 Left: 05,23 (Assumed Left: H1)

Runways:

| Name: | Dimensions: | Material: | Condition: | Treatment: |
|-------|-------------|-----------|------------|--------------|
| 05/23 | 11421X151 | asphalt | good | grooved |
| H1 | 100X100 | concrete | excellent | no treatment |

Tower:

Mil Ops Hrs: 24
 Tower Hrs: 24
 Call Lgt Ops.
 Dep Rwy 05.
 Dep Rwy 23.
 Sfa.

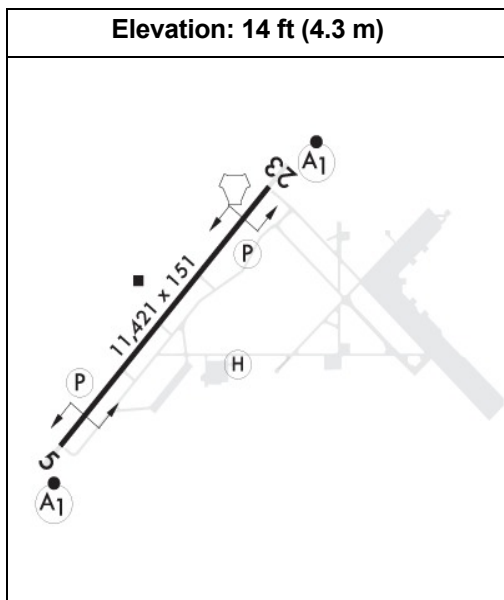
Lighting:

Hirl Rwy 5/23 Opr When Twr Opn.

Charts: NACO: Miami Sectional

Fuel: Jet A

Elevation: 14 ft (4.3 m)



Notes:

Caution: Unctl VFR Tfc in Vcnty of Kmcf Blw 1200 Ft.
 Caution: Use Ctn Durg Taxiing Operations At Night on Spots A1-A4 Due to Removed Aprn Lgtg.
 Communications-Ptd: Unsvc. CTC Amops C813-828-0002.
 Cstms/Ag/lmg: See Flip Ap/1.
 Fluid: Lpox Lox
 Fuel: Air Card Rqrd for Aviation Fuel or U.S. Cash; Cash Fuel Prior Permission Required - Fuels Dsn 968-2074.
 Jasu: (A/M32A-86) (Am32-95) (M32A-60)
 Misc: Macdill Crash Fire Response (Cfr) is an Acft Rescue and Firefighting (Arff) Cat 4 with 7,800 Gal Capability. Steady Arff Cond for Macdill Air Force Base is Optimum Level of Svc (Ols) for Cat 1-4, and Reduced Level of Svc (Rls) for Cat 5-6.
 Misc: Class B Airspace Svc Auto Terminates When Acft is Instr to CTC Twr.
 Misc: Class D Asp Reverts to Class G When Twr is Clsd.
 Misc: When Nvd Operations in Efct CTC Twr 10 Min Prior to Arr or Dep for Airfield Lgt Adj - Info Dsn 968-2120/4822.
 Misc: Wx Obsn Avbl H24 Via Auto Sys Dsn 968-2627. Dur Wx Flt Closures Remote Briefing Svc Avbl Fr 26 Ows Dsn 331-2651, C318-529-2651. When Possible 2 Hr Adv Ntc for All Rqr Briefings.
 Pmsv O/S Ufn. Pls CTC 6 Oss/Osw Wx At (813) 828-4405 for Wx Info.
 Rstd: CTC Base Operations Dsn 968-2929/2350, C813-8282350/2929, for Prior Permission Required Nr, for Svc and Other Rstd.
 Rstd: Helipad H1 (100 Ft X 100 Ft Con) USA Res Aviation Support Fac Macdill Use Only.
 Rstd: Acft Opr Rstd Dur Bird Watch Cond Moderate (Tkof or Ldg Perms Only When Dep and Arr Rte Avoid Ident Bird Act. No Lcl lfr/VFR Tfc Pat Act) and Severe (Tkof and Ldg Proh Wo Og/Cc Apvl), CTC Atis, Twr, Comd Post, or Base Operations for Current Bird Watch Cond.
 Rstd: All Acft Must Land by Prior Permission Required Approved Time or Call with Deviations or Prior Permission Required is Invalid; Exc for Vip.
 Rstd: All Aircrew Dep Civ Airport or Guard/Reserve Base Call Comd Post 1 Hr Prior to Takeoff with Pax/Cargo/Eta Info.
 Rstd: All Dv & Tsnt Acft CTC Macdill Cmd Post 311.0 or Dsn 968-4361/4362 (C813-828-4361) 3 Hr Prior to Arr & 30 Min Prior to Arr with Dv Codes, Customs Info & Space-A Pax Info.
 Rstd: Avoid Ovft of St. Petersburg Land Mass by At Least 1.5 Nm. Prior Permission Required - Base Operations Dsn 968-2929/2350, C813-828-2350/2929, for Prior Permission Required Nr, for Svc and Other Rstd. Prior Permission Required Issued Up to 7 Days Prior to Arr. All Acft Dep Macdill Air Force Base Must Have Flp on File in Amops Prior to Tkof.
 Rstd: Bravo Ramp Prk Spot B4 Clsd for All Acft.
 Rstd: Cargo/Hvy Acft Lndg on Bak-12 Cables Na.
 Rstd: Deployed Unit Cmplx Aprn (Delta/Ducc Ramp) Clsd.
 Tran Alert: Opr 1100-0300Z++. Lavatory Svc Only Ppr. Ltd Tran Prk for Tactical Acft; Exp Svc Delay for Tactical Acft. Unable to Svc Acft with Ordinance. Tran Alert is Contract Maint. Tran Acft Must Land by 0230Z++ Exc Vip. All Ftr Type/Trainer Acft Must Land by 0200Z++. No Multiple lfr/VFR Approach for Tran Acft After 0230Z++. Tran Alert Can Support Minimal Tran Acft for Lcl or Out and Back Tran Flts with Prior Apvl.
 Tsnt Aircrews May CTC 9 Ows for Wx Brief - Dsn 965-0939.
 Bearing Strength: St175; Sbt429; Trt494; Tdt700.
 First 1000 Ft Conc Mid 9420 Ft Asph.
 Mkd 150 Ft Wide with 50 Ft Wt Brg Shoulders Each Side.
 Hook Bak-12B(B) (1338 Ft). N and S Bak-12B Avbl Mon-Fri 1300Z-2030Z++; 45 Min Pn to Cnct Cable, Unabvl Drg Wkend and Federal Hol.
 Hook Bak-12B(B) (1397 Ft). N and S Bak-12B Avbl Mon-Fri 1300Z-2030Z++; 45 Min Pn to Cnct Cable, Unabvl Drg Wkend and Federal Hol.



Notes:

RESTRICTED. MILITARY AIRPORT. PRIOR PERMISSION REQUIRED. CONTACT BASE OPS MANAGER 813/828-2350, 813/828-2321

Year-round, 7 Days a Week, All

Ag: See Global Hf Systems Listing in Fih.

All Acft Req to Park on Army Aprn Must CTC Asf Macdill C813-828-3180/3183 Up to 7

Days Prior to Arr/Mnm Notice is 24 Hr Prior to Arr.

All Series B-747 & A-380 Must Arrive with A Tow Bar.

An/Fmq-19 Automated Observing Sys in Use; Augmented by Human Obsn When Nec Dur Airfield Hrs.

Caution: Birdbath Only Used for P-3, C-130, E-3A, Kc-135 & B-737 Acft No Ftr or Copter Unless Apvd by Afm.

Caution: Numerous Voids/Sinkholes on Afld; Remain on Twy Cntrl.

Caution: Acft Making 180 Deg Turns on Rwy Use Hammerheads Last 1000 Ft At Each End.

Caution: Bird Haz; Exp Hvy Bird Act Fm 1 Nov - 28 Feb Durg Phase II Bash Period; 24 Hr Bird Watch Alert in Efct.

Caution: Commercial Acft Cross Approach to Macdill Air Force Base Enroute to Tampa International Airport At and Abv 2100 Ft. on Inst Approach to Rwy 05 Use Caution Dur Ovft of Albert Whitted Airport Due to Lgt Tfc Blw Approach Leg 6 Nm Sw. Maint Rwy and Twy Cntrline When Exiting Rwy.

Caution: Nstd Ovr Mrk Macdill Air Force Base on Rwy 05/23 Ends. Nstd Mrks North/South Ramps, Wing-Tip Obst Lines for Trng.

Caution: on Inst Approach to Rwy 23 Use Caution Dur Ovft of Peter O. Knight Airport Due to Lgt Acft Tfc Blw Approach Leg 4 Nm Ne.

