

5.00 mi S of city N42 56.8159' W87 53.8239' Mag Var: 04W

Nav aids:

Type:	ID:	Morse:	Frequency:	Radial:	Distance:
DME	LJT	..- . _ _	115.65	148	12 nm
DME	HRK - _ -	114.05	342	12 nm
VOR/DME	BAE	..- . _ .	116.4	119	20 nm

Traffic Patterns:

No TPA reported. Assume 1,000 AGL.
Left: 01L,19R,01R,19L,07L,25R,07R,25L,13,31

Runways:

Name:	Dimensions:	Material:	Condition:	Treatment:
01L/19R	9990X200	asphalt	fair	grooved
Tree; 3758' from end; 985' Left of center; 82' high; 44:1 clearance slope; Fence; 249' from end; 404' Right of center; 6' high; 8:1 clearance slope;				
01R/19L	4182X150	asphalt	fair	no treatment
Tree; 4336' from end; 463' Left of center; 125' high; 33:1 clearance slope;				
07L/25R	4797X100	asphalt	good	grooved
Tree; 1298' from end; 187' Right of center; 44' high; 24:1 clearance slope; Pole; 1727' from end; 195' Right of center; 77' high; 19:1 clearance slope;				
07R/25L	8300X150	asphalt	fair	grooved
Tree; 3220' from end; 305' Left of center; 80' high; 37:1 clearance slope; Pole; 456' from end; 464' Left of center; 41' high; 8:1 clearance slope;				
13/31	5537X150	asphalt	good	grooved
Pole; 816' from end; 69' Left of center; 33' high; 18:1 clearance slope; Railroad; 626' from end; 295' Right of center; 42' high; 10:1 clearance slope;				

Charts: NACO: Chicago Sectional

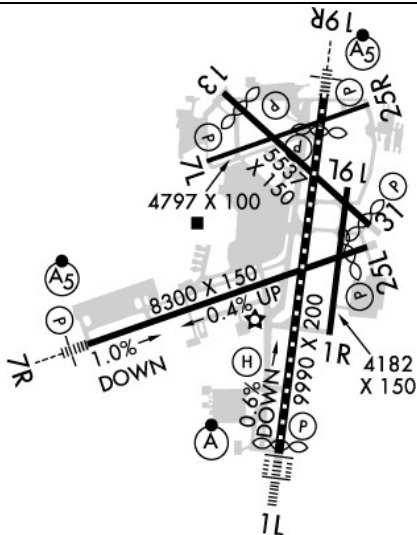
Fees: Deicing, GPU, Handling, Handling, Infrastructure, Landing, Lavatory, Overnight

Fuel: 100LL Low-Lead, Jet A

Communication Freqs:

118.0	App (B SE)
126.5	App IC (A NW)
126.4	WX
118.0	CLASS C (B SE)
126.5	CLASS C (A NW)
120.8	Clearance Delivery
126.4	D-ATIS
125.35	Dep (A NW)
135.875	Dep (B SE)
121.5	Emergency
126.5	GOPAC STAR
121.8	Ground Control
139.5	OPS
129.05	RAMP CTL (CARGO RAMP DEICE/FOLLOW ME)
129.05	RAMP CTL (SOUTH RAMP DEICE/FOLLOW ME)
129.05	RAMP CTL (WEST RAMP DEICE/FOLLOW ME)
124.575	Tower
122.95	UNICOM

Elevation: 728 ft (221.9 m)



Tower:

Mil Ops Hrs: 0800-1630 TUE-SAT
Primary Approach Control Hrs: 24
Primary Depart. Control Hrs: 24
Tower Hrs: 24
(A) West Of 1L-19R Extended Loc Crs Of Active Rwy And North Of 7R-25L Extended Crs Of Active Rwy.
(B) East Of 1L-19R Extended Loc Crs Of Active Rwy And South Of 7R-25L Extended Crs Of Active Rwy.
Asde-X In Use. Operate Transponders With Altitude Reporting Mode And Ads-B (If Equipped)
Enabled On All Airport Surfaces.

Phone: 414-747-5775

Weather: 414-400-9402 (ASOS)

Notes:

Ry 13/31 Clsd Jet Acft, Unless Pmsn from Twr or Airport Manager 414-747-5325.
Ry 19R Toda 8,750 Ft from Int Twy V.
Trng Flgts Involving Successive Use of Any Ry Prohibited 2200-0600.
Twy A between Twy R and Twy A1 Clsd to Acft Wingspan More Than 171 Ft Exc Prior Permission Required 414-747-5325.
Twy A Clsd between Twy A4 and Twy A5 to Acft with Wingspan Greater Than or Equal to 214' Unless Permission from Airport Manager 414-747-5325
Twy A Clsd Fm Twy R to Twy E and Twy E Clsd Fm Twy T to Twy E1 and Twy T Clsd N of Rwy 07R/25L, and Twy M Clsd Fm Twy E to Rwy 01R/19L to Acft with Tail Hgt Gtr Than 54.5 Ft Durg Cat II and Cat III Ops.
Twy B between Twy R and Twy A1 Clsd to Acft Wingspan More Than 118 Ft Exc Prior Permission Required 414-747-5325.
Twy B between Twy V and Twy P Clsd to Acft with Wingspan Greater Than 170 Ft.
Twy C Clsd Btwn Approach End of Rwy 7L and West Ramp North Txl to Acft with Wingspan Gtr Than or Equal to 118 Ft Unless Pmsn Fm Airport Manager 414-747-5325.
Twy F (E of Rwy 19R), Twy H, Twy J, and Twy P Clsd to Acft with Wingspan Gtr Than 78 Ft Unless Pmsn Fm Airport Manager At 414-747-5325.
Twy F (West of Twy Z) Clsd to Acft with Wingspan Greater Than or Equal to 118 Ft Unless Permission from Airport Dir At 414-747-5325.
Twy S & Twy T between Twy R & Ry 07R/25L and Ry 07R/25L between Ry 1R/19L & Twy R Clsd Durg Cat II & III Opns.
Twy V between Twy D and Ry 7L/25R Clsd to Acft with Wingspan Greater Than 170 Ft When Ry 7L/25R In Use.
Arff Index D Equip Avbl Upon Request.
Email Address: Bdranzik@Mitchellairport.Com (All Lower Case)
Pcr Value: 1280/R/C/W/T
Pcr Value: 1540/R/C/W/T
Not Avbl for Skedd Acr Operations with More Than 9 Psgr Seats or Unskedd Acr Operations At Least 31 Seats.
Pcr Value: 370/F/B/X/T
Pcr Value: 1460/R/C/W/T
Pcr Value: 580/R/C/W/T
Unusbl Byd 9 Degs Right and Left of Cntrl.
Apch Ratio 27:1 to Dsplcd Thld; 87 Ft Tree 2375 Ft to Dsplcd Thld; 490 Ft Left.
Apch Ratio 36:1 to Dsplcd Thld; 100 Ft Tree 3641 Ft to Dsplcd Thld; 901 Ft Right.
Fence 148 Ft Fm Thld; 391 Ft R of Cntrl.
Apch Ratio 29:1 to Dsplcd Thld; 39 Ft Pole, 1140 Ft to Dsplcd Thld; 544 Ft L.
Apch Ratio 27:1 to Dsplcd Thld; 42 Ft Rr 1160 Ft to Dsplcd Thld; 290 Ft R.
Service-Fuel: A++ (Mil Ang)



Notes:

Security Directive SD-8G

Year-round, 7 Days a Week, All

Acft are not Permitted to Make Left Turn Onto Twy E When Exiting Twy E2.

Acft with Wingspan Greater Than 175 Ft Cannot Pass Simultaneously on Twy 'E' & Twy 'Z'.

All Aircraft Pushbacks from Gates C20, C21, C22, C23, D39 D41 D43, D45, D48, D51,

D53, D54, D55, E65, E66, & E67 Require Clearance from Ground Control. Pushbacks from

All Other Gates are At Ramp/ Pilot Discretion; Contact Ground Control When Ready to Taxi.

All Apchs are Over Noise Sensitive Areas; All Turbojet Acft Should Refrain Fm Conducting

Multi VFR Tfc Pattern Apchs & Deps Wo Prior Apvl Fm Airport Manager Call

C414-747-5325.

Ang: Prior Permission Required All Acft 48Hr Pn, CTC Airfield Mgmt Dsn 580-8241,

C414-944-8241. Airfield Mgmt Hr 1200Z-2230Z++ Mon-Thurs, Clsd Hol, Fri-Sun Exc Unit

Tmg. Maint Operations (Mocc) Freq - 379.85. Any Mds (Other Than Kc-135) Ltd to Std

Tran Marshalling and Prk. No Tech Data Avbl for Tran Maint. Fuel and Age Support Avbl

for Self-Svc. No Adnl Confgn Items Supported Such As Lantirn Pods, Edm Pods, Etc. Ang:

Eor Fac, Acft Shelters/Revetments Unavbl. Apn Has Ltd Static Gnd Points and Tie Down

Points. Fleet Svc/Haz Cargo Class 1.1., 1.2.1, 1.2.3. Prkg Unavbl. Pre-Coord All

Transportation Requirements and Haz Cargo with Prior Permission Required Req. CTC Upset

Ctl on 321.0 30 Min Prior to Ldg. Nstd Mrk on Apn for Wingtip Clnc Used by Base Asgnd

Acft.

Birds on & In vicinity of Arpt.

Deice Pad for Rwy 07R not Authority for Thru Taxi.

Holding Bay At Ry 01L Clsd Excp Acft with Wingspan Less Than 118 Ft.

Holding Bay At Ry 19R When in Use, Twy Z Adjacent to Bay is Limited to Acft with

Wingspan Up to 170 Ft.

Preferred Usage by Acft between 2200-0600 is Tkof Ry 19R & Lndg Ry 01L.

Rwy 01R-19L Clsd Exc Tax.

Rwy 13/31 & 07L/25R Clsd Exc Lgt Wt Sngl Eng Acft 0400-1200Z Dly.

Ry 07L/25R Clsd to All Jet Acft.

Ry 07L/25R No Acft 65,000 Lbs or Greater Allowed to Taxi between Twy D & Ry 13/31

and East of Ry 19R.

FBO's Summary:**Signature Flight Support**

Location: N

Phone: 414-747-5100; Freq: ARINC: 131.000; Hours: 24/7

Avflight Milwaukee

Location: N

Phone: 844-383-5653; Freq: ARINC: 136.525; Hours: 01/01-12/31, Sun-Sat, 00:00-23:59;

Jet Aviation

Phone: 414-348-5900; Freq: ARINC: 131.200; Hours: 1/1-12/31, Sun-Sat, 05:00-21:00;

Other (Non-FBO) Businesses Summary:**Cessna Citation Service Center**

Location: CTR

Phone: 414-744-1500; Freq: ARINC: 123.200; Hours: 01/01-12/31, Sun-Sat, 00:00-00:00;

