

KOAK

Oakland Intl
Oakland, CA

4.00 mi S of city N37 43.2757' W122 13.2690' Mag Var: 14E

Nav aids:

Type:	ID:	Morse:	Frequency:	Radial:	Distance:
VOR/DME	OAK	— — — — —	116.8	141	0 nm
VOT	SFO	111.0	049	9 nm
VOR/DME	SFO	115.8	033	9 nm

Traffic Patterns (FAA):

Tfc Pat Alt Rwy 28L 606' MSL

Rwy 28R 1006' MSL

Right: 28R,12,33 Left: 10L,28L,30,15 (Assumed Left: 10R)

Runways:

Name:	Dimensions:	Material:	Condition:	Treatment:
10L/28R	5457X150	asphalt	good	grooved
<i>Building: 530' from end; 480' Right of center; 11' high; 30:1 clearance slope;</i>				
10R/28L	6213X150	asphalt	good	grooved
12/30	10520X150	asphalt	good	grooved
15/33	3376X75	asphalt	good	no treatment

Tower:

Tower Hrs: 24

Freq 121.5/243.0 Not Avbl At Atct.

Master (Nct) Arpt Prvds Class B Svc For San Francisco Intl.

Said In Use. Operate Transponders With Altitude Reporting Mode And Ads-B (If Equipped)

Enabled On All Airport Surfaces.

Charts: NACO: San Francisco Sectional

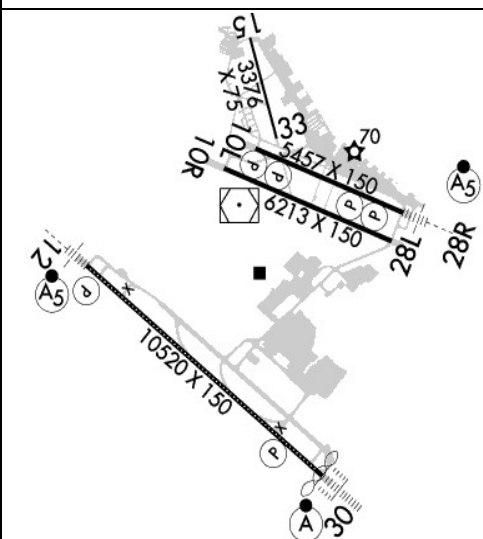
Fees: Facility, GPU, GPU, Handling, Infrastructure, Lavatory, Lavatory, Overnight, Parking

Fuel: 100LL Low-Lead, Jet A

Communication Freqs:

125.35 AANET STAR
128.325 App
125.35 App IC (EAST)
125.35 App IC (RWY 28L/R)
133.95 App(S)
134.5 App(S)
135.1 App/Dep (WEST)
120.9 CLASS C (NW)
125.35 CLASS C (EAST)
127.0 CLASS C (NORTH)
133.95 CLASS C (SOUTH)
135.1 CLASS C (WEST)
121.1 Clearance Delivery
135.1 CNDEL DP
135.1 COAST DP
133.775 D-ATIS
120.9 Dep (NW)
124.525 EMZOH STAR
120.9 HUSSH DP

Elevation: 9 ft (2.7 m)



Communication Freqs:

121.9 Ground Control(RWY 10L/28R, 10R/28L, 15/33)
118.3 Tower(RWY 10L/28R, 10R/28L, 15/33)
127.2 Tower(RWY 12/30)
120.9 SCAGGS ISL& DP
135.1 SKYLINE DP
120.9 MARINA DP
120.9 SILENT DP
135.1 NUEVO DP
135.1 QUAKE DP
135.1 SUNNE DP
122.95 UNICOM
121.75 Ground Control(RWY 12/30)
124.525 PANOCHE STAR
124.8 OAKES STAR
120.9 WNDSR STAR
127.0 NIMITZ DP
135.1 KATFH DP
120.9 OAKL& DP
120.9 SALAD DP
124.9 Tower(S)

Phone: 510-563-6436

Weather: 510-214-1776 (ASOS)

Notes:

Year-round, 7 Days a Week,All

100 Ft Lgtd Microwave Ant Twr Lctd 1320 Ft Wsw of Oak Vortac; S of Upwind End of Rwy 28L.

24 Hr Noise Abatement Proc: Tbjt and Turbofan Pwr Acft, Turborops Over 17000 Lbs, Four-Eng Reciprocating Pwr Acft, and Surplus Mil Acft Over 12500 Lbs Should Use Rwy 12/30.

400 Ft by 220 Ft Blast Pad Rwy 12 and Rwy 30.

Acft with Experimental or Ltd Certif Having Over 1000 Horsepower or 4000 Lbs are Rstrd to Rwy 12/30.

Birds on & In vicinity of Arpt.

For Noise Abatement Info CTC Noise Abatement Ofc At (510) 563-6463.

Noise Abatement Procs N/A in Emergs or Whenever Rwy 12/30 is Unavbl Due to Maint, Safety, Winds or Wx.

Rwys 30, 28R and Rwy 28L District Rmng Signs L Side.

Twy A, E, G, H between Rwy 28R and Twy C Max Acft Wt 150,000 Lbs.

Twy C between Rwy 28R & Twy G and Twys B, J, and D Max Acft Wt 861,000 Lbs.

Twy C between Twy G & J Max Acft Weight 90,000 Lbs Single; 144,000 Lbs Dual; 257,000 Lbs Tandem.

Twy C between Twy J & F Max Acft Weight 76,000 Lbs Single; 115,000 Lbs Dual; 257,000 Lbs Tandem (Dual Tandem Na).

Twy G & H between Rwy 28L & 28R: Max Acft Wt 12,500 Lbs.

Twy K between Twy D & Int Twys F, L, K Max Acft Weight 56,000 Lbs Single; 70,000 Lbs Dual; 130,000 Lbs Tandem.

Twy K between Twy J and Int Twys F, L, K Max Acft Wt 33000 Lbs Single; 45000 Lbs Dual; Tandem Na.

Twy P Max Acft Wt 116,000 Lbs Single; 190,000 Lbs Dual; 305,000 Lbs Dual Tandem; 735,000 Lbs Double Dual Tandem.

Underlies Class B Asp, be Aware of Speeds on Arr and Dep.

Operations - Darron Evans, Operations Superintendent (510)563-6432, Cell: (510) 715-6286
24Hr Operations (510) 563-3361.

Pcr Value: 1266/F/B/X/T

Pcr Value: 934/F/B/X/T

Pcr Value: 1295/F/B/X/T

Rwy 15/33 not Avbl for Part 121/Part 380 Operations with Sked Pax Carrying Operations

More Than 9 Pax Seats and Non-Sked Pax Carrying Operations More Than 30 Pax Seats.

Engineered Materials Arresting System (Emas) 162 Ft in Length by 154 Ft in Width Lctd At the Der 28L.

Ldg Fee in Efct 24 Hrs/Day, CTC Airfield Operations (510) 563-3361.



FBO's Summary:
Kaiser Air, Inc.
Location: N
Phone: 510-569-9622; Freq: ARINC: 129.750; Hours: 01/01-12/31, Sun-Sat, 00:00-23:59;
Signature Flight Support
Location: CTR
Phone: 510-633-1266; Freq: ARINC: 130.575; Hours: 24/7

Other (Non-FBO) Businesses Summary:
Oakland Flyers, LLC
Location: N
Phone: 510-568-3317; Hours: 01/01-12/31, Sun-Sat, 10:00-14:00;
Sundance Air Services
Location: NW
Phone: 510-635-0300; Hours: 01/01-12/31, Mon-Fri, 08:30-17:00;
Aviation Institute of Maintenance - Oakland, CA
Phone: 510-553-9600; Hours: 01/01-12/31, Mon-Thu, 08:00-20:00; 01/01-12/31, Sat-Sat, 09:00-13:00; 01/01-12/31, Fri-Fri, 08:00-17:00;
College of Alameda
Location: NW
Phone: 510-748-2353; Hours: By Appointment

