

# KPVB

## Platteville Muni Platteville, WI

3.00 mi SE of city N42 41.3617' W90 26.6633' Mag Var: 01W

### Nav aids:

Type:	ID:	Morse:	Frequency:	Radial:	Distance:
VORTAC	DBQ	··· ---	115.8	030	21 nm
DME	LNR	··· -	116.05	201	39 nm

### Traffic Patterns:

No TPA reported. Assume 1,000 AGL.  
Left: 07,25 (Assumed Left: 15,33)

### Runways:

Name:	Dimensions:	Material:	Condition:	Treatment:
07/25	3599X75	asphalt	excellent	no treatment
<i>Tree; 880' from end; 275' Right of center; 21' high; 32:1 clearance slope;</i>				
<i>Road; 750' from end; 330' Left of center; 31' high; 17:1 clearance slope;</i>				
15/33	3999X75	asphalt	good	no treatment
<i>Trees; 360' from end; 25' Right of center; 6' high; 28:1 clearance slope;</i>				

### Lighting:

Actvt REIL Rwy 15 & 33; PAPI Rwy 7 & 25; MIRL Rwy 07/25 & 15/33 - CTAF.

**Charts:** NACO: Chicago Sectional

**Fees:** Hangar, Tiedown

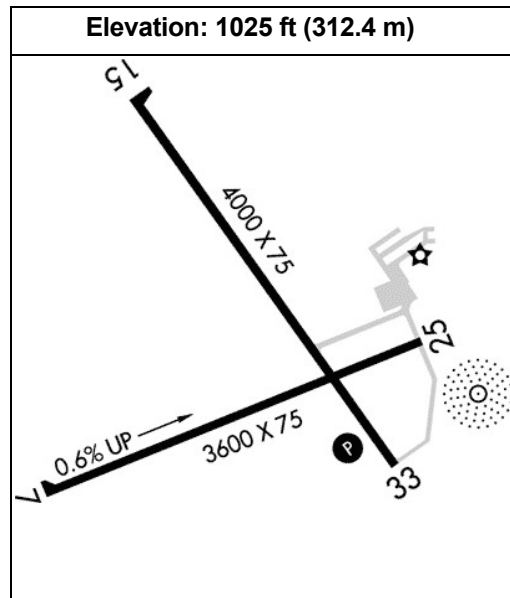
**Fuel:** 100LL Low-Lead, Jet A

**Phone:** 608-348-3582

**Weather:** 608-348-3637 (AWOS-3)

### Communication Freqs:

120.575 WX  
122.7 CTAF  
122.7 UNICOM



### Notes:

Year-round, 7 Days a Week, 0800-1700  
For Cd If Una to CTC on FSS Freq, CTC Chicago ARTCC at 630-906-8921.  
24 Hr Self Svc Fuel Avbl with Credit Card.

### FBO's Summary:

#### A&A Aviation, LLC

Location: E  
Phone: 608-988-6864; Hours: Mon-Sat, 08:00-17:00;