

9.00 mi NW of city    N35 52.6583'    W78 47.2483'    Mag Var: 09W

Nav aids:

Type:	ID:	Morse:	Frequency:	Radial:	Distance:
VORTAC	RDU	..-    ..-    ..-	117.2	336	0 nm
VORTAC	LIB	..-    ..    -...	113.0	087	40 nm
VORTAC	SBV	...    -...    ...-	110.4	172	49 nm

Traffic Patterns:

No TPA reported. Assume 1,000 AGL.  
Right: 23R,05R Left: 14,32 (Assumed Left: 05L,23L)

Runways:

Name:	Dimensions:	Material:	Condition:	Treatment:
05L/23R	10000X150	concrete	good	wire comb/time
05R/23L	7500X150	asphalt	good	grooved
14/32	3570X100	asphalt	good	no treatment

*Trees; 3046' from end; 1' Left of center; 120' high; 24:1 clearance slope;*

Tower:

Primary Approach Control Hrs: 24  
Primary Depart. Control Hrs: 24  
Tower Hrs: 24

Lighting:

Visibility of Bcn Shielded to the North.

**Charts:**    NACO: Charlotte Sectional

**Fees:**    Facility, GPU, Handling, Infrastructure, Lavatory, Overnight, Parking, Security

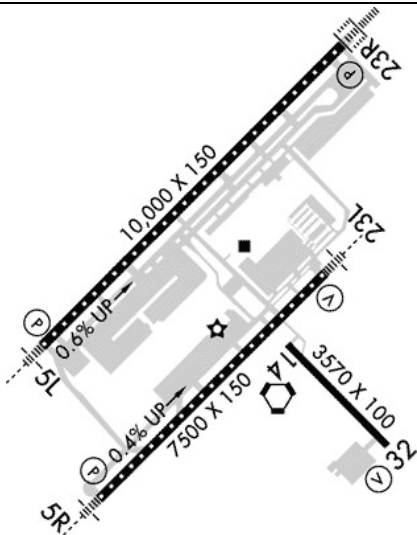
**Fuel:**    100LL Low-Lead, Jet A

**Phone:**    919-840-7701

Communication Freqs:

124.95    *App (055-229)*  
127.675    *App IC (230-054)*  
132.35    *BEXGO DP*  
124.95    *BLOGS STAR*  
124.95    *BRAD E STAR*  
127.675    *BUZZY STAR*  
125.3    *CLASS C (055-229)*  
132.35    *CLASS C (230-054)*  
120.1    *Clearance Delivery*  
123.8    *D-ATIS*  
125.3    *Dep (055-229)*  
132.35    *Dep (230-054)*  
127.675    *DMSTR STAR*  
121.5    *Emergency*  
121.9    *Ground Control*  
125.3    *HOOKZ DP*  
125.3    *HURIC DP*  
132.35    *LWOOD DP*  
132.35    *OXFRD DP*

Elevation: 435 ft (132.6 m)



Communication Freqs:

132.35 <i>RALEIGH DP(230-054)</i>	125.3 <i>RALEIGH DP(055-229)</i>
132.35 <i>PACKK DP(230-054)</i>	125.3 <i>PACKK DP(055-229)</i>
124.95 <i>TAQLE STAR</i>	132.35 <i>SHPRD DP</i>
125.3 <i>ROZBO DP</i>	122.95 <i>UNICOM</i>
127.45 <i>Tower</i>	

**Weather:** 919-244-2891 (ASOS)

Notes:

Year-round, 7 Days a Week,All  
Airport Clsd to Airships.  
All Tdg V Aircraft Txd on Twy A are Rstd to Taxi Spd of 15 Mph.  
Apn Txl F between Twy T1 and Twy T7 Clsd to Acft with Wingspan More Than 171 Ft.  
Arng: Ltd Prk. Arng Operations C984-661-6200. CTC Forecast Base 10 Min Prior Ldg. Ramp  
Clsd to All F/W Except Army & Mil Transport with Ppr, Facility Hrs 1300-2130Z++ Mon-Fri  
Exc Hol. Make Appt for After Duty Hrs. Osacom Flt Det C984-661-6202.  
Ng 24 Hr Prior Permission Required for Jet Acft & Trans Mil Acft - 919-840-7510.  
Ng Prior Permission Required for Ldg CTC V582-9181 C(919)664-9181.  
No Jet Engine Maintenance Runs Between 0000-0600.  
Rstd: Prior Permission Required for All Military Aircraft F/W - R/W & Unscheduled Charter  
Flights with 30 or More Passengers. 24 Hr Pn Rqr for Mil Practice Apch. CTC Airport  
Operations 919-840-7510 or Rdu App C919-380-3125. 24 Hr Pn Rqr for Prior Permission  
Required for All F/W and R/W Mil Acft Going to Arng Ramp, Poc C984-661-6200. Osacom  
Flt Det C984-661-6202.  
Trml 1 Acft Must CTC Atc on 121.9 Prior to Push Onto Twy A. Trml 2 Acft Must CTC  
Ramp Twr on 130.175 Prior to Push. North Cargo Apron Adg Iv or V Acft Must CTC Atc  
on 121.9 Prior to Push.  
Twy C between Twy F and G is Rstrd to Acft Less Than A Max Gross Tkof Weight of  
490000 Lbs.  
Twy D Clsd to Acft with Wingspan More Than 171 Ft When Twy G and H are Occupied.  
Twy E Behind South Cargo 4 & Twy J Behind Corporate Hangars not Vsbl Fm Atct.  
Twy F Clsd to Acft with Wingspan More Than 171 Ft.  
Twy F4 & F5 is Clsd Ufn.  
Pcr Value: 801/R/B/W/T  
Rwy 05L/23R Ungrooved.  
Pcr Value: 783/F/C/X/T

FBO's Summary:

Signature Flight Support

Location: NW  
Phone: 919-840-2200; Freq: ARINC: 131.150; Hours: 24/7

Atlantic Aviation

Location: NE  
Phone: 919-840-4400; Freq: ARINC: 131.000; Hours: 01/01-12/31, Sun-Sat, 00:00-23:59;



Other (Non-FBO) Businesses Summary:

FlightGest Academy

Location: NE  
Phone: 919-840-4444; Hours: 01/01-12/31, Sun-Sat, 00:00-00:00;

ATP Flight School

Location: NW  
Phone: 904-595-7950; Hours: 01/01-12/31, Mon-Fri, 08:00-21:00; 01/01-12/31, Sat-Sun, 08:00-17:00;

AERO'Connor Aviation

Phone: 413-695-1217; Hours: By Appointment

Elite Aircraft Services

Location: NE  
Phone: 919-576-0174; Hours: 01/01-12/31, Sun-Sat, 00:00-00:00;

Raleigh Flying Club

Phone: 877-640-4919; Hours: By Appointment

LifeStyle Aviation

Location: CTR  
Phone: 406-359-1669; Hours: 01/01-12/31, Mon-Fri, 09:00-17:00;

Raleigh Professional Flight School

Phone: 919-400-9365; Hours: 01/01-12/31, Mon-Sat, 06:00-21:00;

JKL AERO

Phone: 617-465-2555; Hours: By Appointment

