

**Frederick Douglass/Greater Rochester Intl  
Rochester, NY**

3.00 mi SW of city    N43 7.1486'    W77 40.3121'    Mag Var: 12W

**Nav aids:**

Type:	ID:	Morse:	Frequency:	Radial:	Distance:
VOR/DME	ROC	· · — — — · · ·	110.0	042	0 nm
VOR/DME	GEE	— · · ·	108.2	018	17 nm
DME	BUF	· · · · · · · ·	116.4	075	44 nm

### Traffic Patterns (FAA):

TPA: 841' AGL  
Right: 22,07,10 Left: 04,25,28

### Runways:

Name:	Dimensions:	Material:	Condition:	Treatment:
04/22	8001X150	asphalt	good	grooved
	Trees; 3080' from end; 760' Right of center; 89' high; 32:1 clearance slope;			
	Tree; 2080' from end; 520' Right of center; 54' high; 34:1 clearance slope;			
07/25	4000X100	asphalt	excellent	no treatment
	Pole; 1740' from end; 320' Right of center; 58' high; 26:1 clearance slope;			
	Tree; 2720' from end; 430' Right of center; 82' high; 30:1 clearance slope;			
10/28	6402X150	asphalt	good	grooved
	Trees; 1330' from end; 460' Left of center; 62' high; 18:1 clearance slope;			
	Trees; 1213' from end; 663' Right of center; 68' high; 14:1 clearance slope;			

**Tower:**

Primary Approach Control Hrs: 24  
Primary Depart. Control Hrs: 24  
Tower Hrs: 24

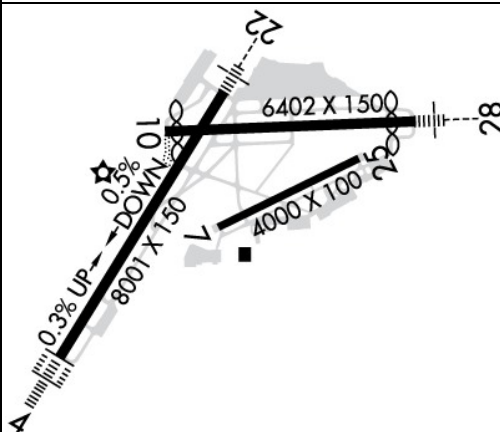
**Charts:** NACO: Detroit Sectional

<b>Fees:</b>	Deicing I, Deicing IV, GPU, GPU, Handling, Handling, International Trash, Landing, Landing, Lavatory, Overnight, Potable Water, Tie Down
--------------	--

**Communication Freqs:**

123.7	<i>App/Dep (161-329)</i>
119.55	<i>App/Dep IC (330-160)</i>
124.825	<i>WX</i>
124.825	<i>ATIS</i>
118.8	<i>CD PRE TAXI CLNC</i>
119.55	<i>CLASS C (330-160)</i>
123.7	<i>CLASS C (161-329)</i>
127.325	<i>Dep(S)</i>
121.5	<i>Emergency</i>
121.7	<i>Ground Control</i>
118.3	<i>Tower</i>
122.95	<i>UNICOM</i>

**Elevation: 559 ft (170.4 m)**



**Fuel:** 100LL Low-Lead, Jet A

**Phone:** 585-753-7056

**Weather:** 585-205-7835 (ASOS)

**Notes:**

Year-round, 7 Days a Week, All  
Flight Notification Service (Adcus ) Available.  
80 Ft Obst Lgt'd Twr 1250 Ft West of Ry 04/22 Cntrl'n 1000 Ft South of Extd'd Cntrl'n Ry  
10/28.  
Be Alert Durg Lndg/Tkof Rys 25 & 28 - Thlds in Close Proximity to Each Other.  
Birds; Deer & Coyote on & In vicinity of Arpt.  
Multiple Unshielded Lgts in Final Approach Area Ry 28.  
No Practice Apchs or Maint Eng Run-Ups between 2300-0600.  
Papi Rwy 22; PAPI Rwy 10, Rwy 25 and Rwy 28 Operate 24 Hrs.  
Rwy 7/25 Clsd to Sked Acr Operations More Than 9 Pax Seats and Non Sked Acr  
Operations More Than 30 Pax Seats.  
Terminal Ramp is Uncontrolled. Do not Call for Push/Power Back. Advise Ground Control  
When Ready to Taxi for Departure.  
Twy "A2" Clsd to Heavy Acft.  
Twy "F" from Twy "F1" to Ry 07 Clsd to Acft W/Wingspan Greater Than 100 Ft.  
Ry 07 REIL Controlled by Air Traffic Control Tower But not Monitored.  
Rwy 10 Approach Ratio 26:1 to Dsplcd Thld.  
Ry 10 REIL Controlled by Air Traffic Control Tower But not Monitored.  
Ry 25 REIL Controlled by Air Traffic Control Tower But not Monitored.  
Engineered Materials Arresting System (Emas) 368 Ft in Length by 160 Ft in Width Lctd At  
the Der 28.  
Rwy 28 Approach Ratio 26:1 to Dsplcd Thld.  
For Dod Acft.

### FBO's Summary:

## USAirports Flight Support

Location: S  
Phone: 585-527-6835; Hours: 01/01-12/31, Sun-Sat, 00:00-00:00;

## Avflight Rochester

Location: SE  
Phone: 585-235-9040; Freq: ARINC: 129.150; Hours: 01/01-12/31, Sun-Sat, 00:00-00:00;

**Other (Non-FBO) Businesses Summary:**

**Rochester Air Center, LLC**

Location: S  
Phone: 585-328-8839; Hours: 01/01-12/31, Sun-Sat, 08:00-17:00;

**OnCore Aviation, LLC**

Location: E  
Phone: 844-347-8600; Hours: 24/7

## LifeStyle Aviation

Location: CTR  
Phone: 406-359-1669; Hours: 01/01-12/31, Mon-Fri, 09:00-17:00;

