

7.00 mi W of city N34 25.5715' W119 50.4896' Mag Var: 14E

Nav aids:

Type:	ID:	Morse:	Frequency:	Radial:	Distance:
VORTAC	RZS	..- .-- ..	114.9	201	6 nm
VORTAC	GVO	--- ...	113.8	101	14 nm
VOR/DME	CMA	..- .-- ..	115.8	274	39 nm

Traffic Patterns (FAA):

TPA 990' Sml Acft
1490' Lrg Acft
Right: 07,33R,33L Left: 25,15L,15R

Runways:

Name:	Dimensions:	Material:	Condition:	Treatment:
07/25	6052X150	asphalt	good	grooved
<i>Tree; 3100' from end; 350' Right of center; 77' high; 37:1 clearance slope;</i>				
<i>Fence; 275' from end; 0' Both-Sides of center; 6' high; 12:1 clearance slope;</i>				
15L/33R	4180X75	asphalt	good	no treatment
<i>Building; 900' from end; 4' Right of center; 37' high; 19:1 clearance slope;</i>				
15R/33L	4184X100	asphalt	good	no treatment
<i>Tree; 600' from end; 200' Right of center; 53' high; 8:1 clearance slope;</i>				
<i>Tree; 1300' from end; 400' Left of center; 65' high; 17:1 clearance slope;</i>				

Lighting:

When Air Traffic Control Tower Clsd Actvt MALSR Rwy 07; REIL Rwy 15R & 25; HIRL Rwy 07/25; MIRL Rwy 15R/33L - CTAF. PAPI Rwy 25 Opr Consly.

Charts: NACO: Los Angeles Sectional

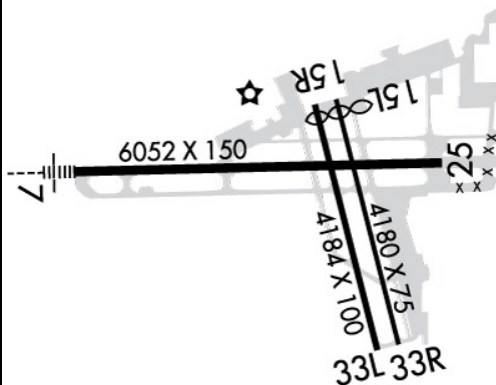
Fees: After Hours, After Hours, Airport and Operations, Facility, GPU, GPU, Handling, Infrastructure, Landing, Landing, Lavatory, Lavatory, Overnight, Parking, Security

Fuel: 100LL Low-Lead, Jet A

Communication Freqs:

124.15 App/Dep
127.725 App/Dep
120.55 App/Dep IC (151-329)
125.4 App/Dep IC (330-150)
132.65 WX
132.65 ATIS
120.55 CLASS C (151-329)
125.4 CLASS C (330-150)
132.9 Clearance Delivery
119.7 CTAF
121.5 Emergency
120.55 GAUCH DP
121.7 Ground Control
120.55 MISHN DP
119.7 Tower
122.95 UNICOM

Elevation: 14 ft (4.3 m)



Tower:

Primary Approach Control Hrs: 0600-2300
Primary Depart. Control Hrs: 0600-2300
Secondary Approach Control Hrs: 2300-0600
Secondary Depart. Control Hrs: 2300-0600
Tower Hrs: 0600-2300
Apch/Dep Ctl Svc Prvdd By Los Angeles Artcc (Zla) On Freqs 119.05/269.5 (Santa Barbara Rcg) When Santa Barbara Apch Ctl (Sba) Clsd.

Phone: 805-967-7111

Weather: 805-681-0583 (ASOS)

Notes:

Landing fee for all Part 135 ops and transient acft w/ max gross weight of 10,000 or greater. Landing fees collected at FBO
Year-round, 7 Days a Week, 0600-2300
Ldg Fee for Part 135 Oprs and Tsnt Acft with Max Gwt of 10000 Lbs or More. Fees Will be Billed/Mailed.
All Acr Acft CTC Atc on Freq 121.7 Prior to Pushback from Trml Ramp and Ron Prkg 0600-2300. Escorts Rqrd from Ron Prkg When Atc is Clsd; CTC Airport Operations 805-681-4803.
Coml Airline Ramp Clsd to All Ga Acft.
Due to Lmted Ramp Space At the Airline Trml Non-Sked Trnsp Cat Acft with More Than 30 Passenger Seats are Rqrd to CTC Airport Operations 805-681-4803 24 Hrs Prior to Arr.
No Customs Psnl or Facs are Avbl and International Acft Will not be Allowed to Land Unless an Emerg Exists.
Noise Abatement Procs in Efct CTC Airport Operations 805-692-6025.
Numerous Flocks of Birds on and In vicinity of Arpt.
Pure Jet Touch/Go or Low Apchs Prohibited.
Rwy 15L/33R Dalgt Hrs Only.
Rwys 15L/33R and 15R/33L not Avbl for Sked Acr Operations with More Than 9 Psgr Seats or Unsked Acr At Least 31 Psgr Seats.
Michael Smith - Operations Manager - Mjsmith@Santabarbaraca.Gov
Pcr Value: 658/F/D/X/T
Pcr Value: 45/F/D/X/T
Pcr Value: 45/F/D/X/T
100LL Fuel 24 Hr Credit Card Svc Avbl.
Fee for Jet A Fuel After Hrs Call (805) 454-0051 or 967-5608.

FBO's Summary:

Signature Flight Support

Location: NE
Phone: 805-967-5608; Freq: ARINC: 131.475; Hours: 01/01-12/31, Mon-Sun, 06:00-22:00;

Atlantic Aviation

Location: N
Phone: 805-964-6733; Hours: 01/01-12/31, Sun-Sat, 06:00-22:00;

Other (Non-FBO) Businesses Summary:

Above All Aviation

Location: N
Phone: 805-683-7575; Hours: 01/01-12/31, Sun-Sat, 09:00-17:00;

Coastal Aircraft Maintenance, Inc.

Location: N
Phone: 805-696-6599; Hours: 01/01-12/31, Mon-Fri, 08:00-15:00;

