

# KSTL

**St Louis Lambert Intl**  
**St Louis, MO**

10.00 mi NW of city    N38 44.9219'    W90 22.2015'    Mag Var: 01W

**Nav aids:**

Type:	ID:	Morse:	Frequency:	Radial:	Distance:
VOT	STL	... _ .__	111.0	330	0 nm
DME	CSX	_. _ .__	116.45	240	0 nm
VORTAC	STL	... .__	117.4	141	9 nm

### Traffic Patterns:

No TPA reported. Assume 1,000 AGL.  
Right: 11,30R,12R Left: 06,24,30L (Assumed Left: 29,12L)

## Runways:

Name:	Dimensions:	Material:	Condition:	Treatment:
<b>06/24</b>	7603X150	concrete	fair	grooved
Tree;	3077' from end;	505' Right of center;	110' high;	27:1 clearance slope;
Sign;	750' from end;	450' Right of center;	18' high;	30:1 clearance slope;
<b>11/29</b>	9000X150	concrete	excellent	grooved
Tree;	3218' from end;	860' Left of center;	121' high;	25:1 clearance slope;
<b>12L/30R</b>	9013X150	concrete	good	grooved
Tree;	4870' from end;	408' Left of center;	132' high;	37:1 clearance slope;
Tree;	1732' from end;	612' Left of center;	52' high;	33:1 clearance slope;
<b>12R/30L</b>	11020X150	concrete	good	grooved
Tree;	3213' from end;	773' Left of center;	119' high;	27:1 clearance slope;
Tree;	2895' from end;	547' Right of center;	99' high;	29:1 clearance slope;

**Tower:**

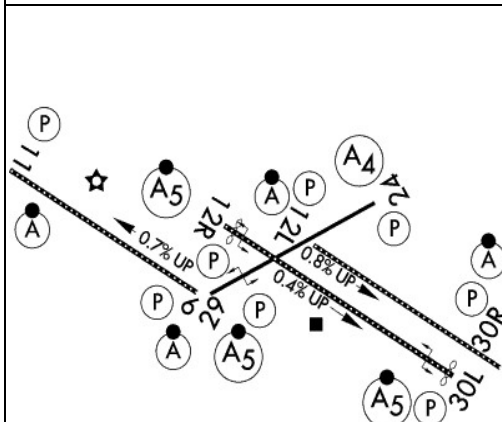
Tower Hrs: 24  
Asde-X In Use. Operate Transponders With Altitude Reporting Mode And Ads-B (If Equipped)  
Enabled On All Airport Surfaces.

**Charts:** NACO: St Louis Sectional

**Communication Freqs:**

132.125 *App*  
121.025 *App(S) (S/W)*  
123.7 *App(S)*  
128.1 *BERRY DP*  
128.1 *BGOOD DP*  
119.15 *BLUES DP*  
128.1 *BRAKK DP*  
119.15 *CARDS DP*  
128.1 *CHUUC DP*  
124.2 *CLASS B (N/E)*  
126.5 *CLASS B (S/W)*  
119.5 *Clearance Delivery*  
125.025 *D-ATIS*  
119.15 *Dep (N/E)*  
128.1 *Dep (S/W)*  
128.1 *DRUSE DP*  
119.15 *EEMOS DP*  
121.5 *Emergency*  
119.15 *GATWY DP*

**Elevation: 617 ft (188.1 m)**

**Communication Freqs:**

118.925 Ground Control(RWY 11/29)	121.65 Ground Control(OUTBOUND)
119.15 TURBO DP(AXC TRANSITION)	121.9 Ground Control(INBOUND)
120.05 Tower(RWY 12L/30R, 24)	132.475 Tower(RWY 06, 11/29)
121.075 GND METERING(WEST)	127.55 GND METERING(EAST)
118.5 Tower(RWY 12R/30L)	119.15 JHART DP
119.15 KSHEE DP	119.15 NATCA DP
119.15 ROTRY DP	119.15 TEDDD DP
128.1 JAHNY DP	128.1 LINDY DP
128.1 OZARK DP	128.1 PLESS DP
128.1 TURBO DP	128.1 WHRLI DP
122.95 UNICOM	

**Fees:** Deicing, Deicing I, Deicing IV, GPU, GPU, Handling, Handling, Infrastructure, Trash/Landfill, Lavatory, Lavatory, Overnight, Ramp

**Fuel:** 100LL Low-Lead. Jet A

**Phone:** 314-426-8000

**Weather:** 314-238-8419 (ASOS)

### FBO's Summary:

**ATS JetCenter**  
Location: NE  
Phone: 314-895-8788; Hours: 01/01-12/31, Mon-Fri, 00:00-23:59; 01/01-12/31, Sat-Sun, 07:00-14:00:

## Signature Flight Support

Location: NE  
Phone: 314-731-7111; Freq: ARINC: 131.350; Hours: 24/7

**Other (Non-FBO) Businesses Summary:**

**FlightSafety International**

Location: N  
Phone: 314-442-3300: Hours: 24/7

**On Site Aircraft Service, Inc**

Location: NE  
Phone: 314-731-1737; Hours: 01/01-12/31, Mon-Fri, 07:00-16:00;



**Notes:**  
Year-round, 7 Days a Week, All  
A-Gear: A-G are Kept in Recessed Posn Til Req for Use. Twr Must be Notified At Least 5 Sec Prior to Engagement So That Cable May be Raised.  
Twy Alpha East of Twy Tango, Twy Sierra and Rwy 6/24 South of Twy Bravo, No Acft or Vehicle Operations When Arriving or Depg Rwy 11 or Arriving Rwy 29.  
Twy Charlie, East of Twy Delta One to the Approach End of Runway 30L, Rstrd to B-737 or Smlr Acft (Wingspan Less Than 118 Ft) When Acft are Parked on the Hotel Pad.  
Twy Charlie, Fm Twy Sierra to Twy Charlie Seven, Rstrd to B-767 or Smlr Acft (156 Ft Avbl) When Acft are Parked in the Charlie Pad. Rstrn is for Tax Acft, Lrger Acft May be Towed Thru Area.  
Twy Charlie, from Twy Charlie Seven to Twy Charlie Six, Rstrd to A B757-300 Series or Smlr.  
Twy Charlie, from Twy Charlie Six to Twy Delta Four, Rstrd to B757-300 Series or Smlr When Passing Bhnd Acft That Have Made the Initial 10 Ft Pushback.  
Twy Delta or Taxilane Charlie Fm Twy Sierra to Twy Golf, B-747S are not Authority to Pass or be Passed by B767 or Other Lrger Acft Oprg on the Parl Twy/Taxilane.  
Twy Echo, between Twy November and Twy Lima Rstrd to B-767 or Smlr Acft (Wingspan Less Than 171 Ft) When Acft are Parked on the Echo Pad.  
Twy Kilo 1 is Unavbl to B-767 or Lrger Acft (Wingspan 118 Ft or Gtr).  
Twy Lima, North of Rwy 12L/30R, Acft Lrger Than A Gulfstream Vi Tax Nbnd are Prohibited Fm Making A Right Turn Ebnd on Twy Foxtrot.  
Twy November between Rwy 24 and Foxtrot, Rstrd to Acft with A Wingspan of Less Than 79 Ft (Crj-900 or Smlr) When Acft are Parked on the November Pad. This Area is Rstrd to All Operations When Acft are Performing End Run-Ups in the November Pad.  
Twy Victor 2 is Unavbl to B-767 or Lrger Acft (Wingspan 118 Ft or Gtr).  
Twy Victor 2, B-737 (Wingspan Gtr Than 79 Ft But Less Than 118 Ft) Must Perform Judgmental Oversteering Instead of Cockpit Ovr Cntrln Steering When Tax.  
Twy Victor, Underlying the Rwy 12L Fna Crs, is Rstrd to Acft with A Tail Hgt of 25 Ft or Less (Crj-700 or Smlr) When Acft are Lndg on Rwy 12L.  
Waiver to Conduct Simul Apchs to Parl Rys Separated by 1,300 Ft in Efct.  
Wg Tip Clnc with Gnd Veh not Adqt Alg N Side of Main Trml Apn.  
Airport Director  
City Hall  
Deliveries Goto: 10701 Lambert International Blvd.  
Runway Load Capacity: St175  
Runway Load Capacity: St175  
Runway Load Capacity: St175  
Bak-14 Bak -12B(B) (1450')  
Apch Ratio Fm Dsplcd Thr 25:1.  
Bak-14 Bak -12B(B) (1090')  
Apch Ratio Fm Dsplcd Thr 34:1.  
Bak-14 Bak -12B(B) (1300')  
Lndg Fee Based on Acft Weight Collected by FBO.  
Jet-A

