

KSUU

Travis Afb
Fairfield, CA

3.00 mi E of city N38 15.8722' W121 55.4479' Mag Var: 13E

Nav aids:

Type:	ID:	Morse:	Frequency:	Radial:	Distance:
VOR/DME	CCR	— · — · — · — ·	117.0	006	14 nm
VORTAC	SAC	... — — — —	115.2	222	21 nm
VORTAC	SGD	... — — — —	112.1	059	22 nm

Traffic Patterns:

No TPA reported. Assume 1,000 AGL.
Left: 03L,21R,03R,21L (Assumed Left: 032,212)

Runways:

Name:	Dimensions:	Material:	Condition:	Treatment:
032/212	3500X90	concrete	not reported	no treatment
03L/21R	11001X300	pem	not reported	no treatment
03R/21L	10995X150	concrete	not reported	no treatment

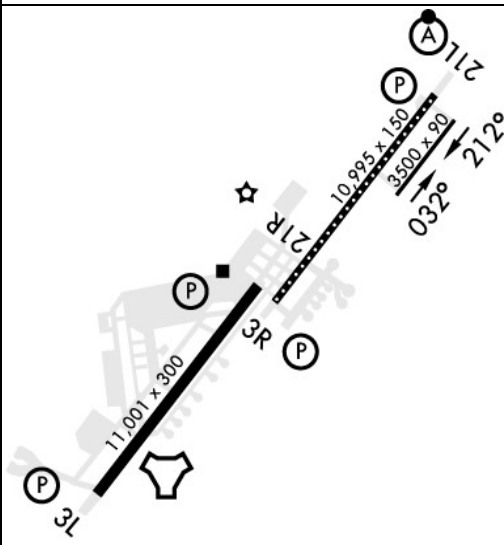
Charts: NACO: San Francisco Sectional

Phone: 707-424-2836

Communication Freqs:

119.9	App (SOUTH)
126.6	App (NORTH)
128.4	App(S)
139.9	App(S)
119.9	BMBER STAR (SOUTH)
126.6	BMBER STAR (NORTH)
124.8	SAT
127.55	Clearance Delivery
141.9	COMD POST
135.55	D-ATIS
119.9	Dep
126.6	Dep(S)
121.5	Emergency
121.8	Ground Control
123.7	SAT
120.75	Tower

Elevation: 63 ft (19.2 m)



Tower:

Mil Ops Hrs: 24
Primary Approach Control Hrs: 24
Primary Depart. Control Hrs: 24
Tower Hrs: 24
Call Golden Ops
Comd Post Vhf Freq Unsvc.
Comm/Nav/Weather Remarks: Asr-11/Dasr - No-Notam Mp 0701-1300Z++ Mon Thru Fri.
Ils/Radar-Radar: Radar Coverage Ltd In Area Bounded By Suu075/004, Suu115/013, Suu157/011, Suu185/003. Tfc Adzy May Not Be Avbl To Non-Transponder Eqpt Acft.
Communications: Travis Aero Club - 122.725 Remarks: Lctd At Rio Vista Muni O88.
Communications: Sfa Remarks: On Req.
Ils/Radar-Radar: Limitation Between Tacan (Suu) 075 And 185 Radials, Beginning 3 Dme Out To 13 Dme All Altitudes. Traffic Advisories Available On Transponder Equipped Aircraft Only.
Wx Svc Avbl 24/7 At Dsn 837-3003/5549, C707-424-3003/5549. An/Fmq-19 Automated Observing Sys In Use; Augmented By Human Obsn When Nec. Dur Wx Flt Closure Or Evac, Remote Briefing Svc Avbl Fr 25 Op Wx Sq Dsn 228-6598/6599/6588, C520-228-6598/6599/6588. When Auto Obsn Sys Inop, Obst At 350-020 Degs And 210-280 Degs May Impact Derived Prevailing Vis. Rvr Info Not Avbl Rwy 21R Apch.

Notes:

Misc: First 2175 Ft Rwy 03R and First 1000 Ft Rwy 21L Conc; 75 Ft Keel Section is Conc, Rmng Width is Reinforced Asph, 38 Ft on Either Side of Keel. First 1000 Ft Rwy 21R and First 2900 Ft Rwy 03L Conc, Mid 7100 Ft Asph.
Misc: No Classified Mtrl Storage Avbl At Am Ops. All Tsnt Classified Must be Stored in Travis Air Force Base Command Post.
Misc: Twy A Sfc Paint Incor; Should Read 21L.
Misc: All Acft Carrying Dv Will Notify Comd Post No Later Than 24 Hr Prior with Arr Time and Rqr At Dsn 837-5517 or C707-424-5517. Acft with Dv Code 7 or Abv and All Inbd Pax/Cargo Acft Must CTC Comd Post 30 Min Prior to Ldg and Confirm Block Time.
Misc: Backing Operations Proh on Spots 511 Thru 515. Shoulders are Non-Load Sfc. Rwy 21L/03R Grooved 148 Ft Entire Ry.
Misc: David Grant Medical Center Helipad Lctd 3816.12N/12158.12W, Elev 59 Ft. Helipad not Visible from Twr. Helipad Equipped with Pilot Ctl Lgt (Vhf 120.75) Ldg/Dep Will be At Your Own Risk.
Misc: Travis Crash Fire Response (Cfr) is Arff Cat 6 with 12626 Gallons of Cpblity. Steady Arff Cond for Travis Air Force Base is Optimum Level of Service (Ols) for Cats 1-4 and Reduced Level of Service (Rls) for Cats 5-6.
Oil - O-128-133-148-156.
Ppr Dsn 837-2836/2837 C707-424-2836/2837.
Remarks: Hvy Concentration of Blackbirds, Gulls, and Other Migratory Birds in the Approach and Dep Rtes and Alg Infield Areas from 1 Oct-30 Nov and from 1 Feb-30 Apr (Phase Ii).
Rstd: 180 Deg Turn Rstd to End of Rwy/Thld Areas.
Rstd: Aircrew Should Req 15 Min Early Eng Start for Rqrd Back Taxi Ops. Anticipate Back Taxi on Rwy 03R-21L with Potential Use of Lz for Taxiing When Dep Rwy 21L.
Rstd: Outboard Engs of 4-Eng Acft Rstrd to Idle Pwr on Twys A, B, D, H, M, N, & T and Drg Taxi Operations on Rwy 03R/21L.
Rstd: Rwy 03L-21R Clsd. All Air Operations Prohibited Incl Apch, Low Apch, and Circling or Sidestep Req.
Rwy-Lgts: Rwy 21L Sf.
Rwy: Rwy 21L/03R Grooved 148 Ft Entire Rwy. Rwy 21R First 1000 Ft Conc not Grooved. Tfc Pat Revise To: Rectangular 1600 Ft, Overhead 2100 Ft.
Tran Alert - Svc 24 Hr Dly. Exp Extv Svc Delay Wkend and Hol. Tran Acft, Exc Amc Msn, CTC Comd Post not Later Than 15 Min Out for Svc Req. Fleet Svc Avbl.



Notes:
RESTRICTED. MILITARY AIRPORT. PRIOR PERMISSION REQUIRED. CONTACT BASE OPS
MANAGER 707/424-5517
Year-round, 7 Days a Week, All
Amc Skedd Msn (Exc for Civ Dod Contr, Dv, and Medevac Msn) Do not Rqr Ppr. All
Other Tsnt Acft Rqr Ppr. Tsnt Acft Req Prior Permission Required CTC Airfield Mgmt At
Dsn 837-2836, C707-424-2836 or 60Oss.Osaa.Amops@Us.Af.Mil. Acft with Prior Permission
Required Carrying Dv, Air Evac, and Spl Air Msn Must CTC Airfield Mgmt on Ptd for
Notification and Trkg Purposes.
Caution: Arr Acft Exp Hvy Jet Acft Cros Rwy to Parl Twy.
Caution: Ba on Rwy 03R/21L May be Impaired Due to Hvy Rubber Deposits.
Caution: Emerg Acft Ldg Rwy 03R Exp Poss Dla Resp Exceeding 1 Min for Initial Resp
and 30 Sec Flw-On Rqmnts for Fire Suppression Svc.
Caution: Extv Lgt Acft Opr. Possible Rf Intfc All Freqs 9 Nm Northeast Over Voa Trans.
Exp Wind Shear Blw 2000 Ft on Approach to All Rwys. Hvy C5 Jet Tfc in Immed Vcnty.
Hi Density VFR Tfc Cros Final Approach and Dep Crs.
Caution: Potential for Uas Operations in Vcnty of Travis Afb.
Caution: Rwy 03R/21L Edge Lgts Have Gaps of More Than 400 Ft on the Apch/Dep End
of the Rwy.
Caution: Rwy Edge Lgts for Both Rwys Lctd More Than 10 Ft from Edge of Usable Rwy
Sfc.
Caution: No C17 Combat Offloads Authorized on Twy Delta East of Rwy 21L/3R.
Caution: Twy N May be Tmpy Clsd Wo Ntc S of 900 Ramp Due to C17 Combat
Off-Load/Star Trng.
Cstms/Ag/Img - Due to Ltd. Cstms, Pn/Coord Rqr for Arr Outside Nml Wkd Hr. for Ngt,
Sat, Sun and Hol Arr, 1 Hr Pn Rqr. Msn Coord Thru Travis Comd Post At Dsn 837-5517
or C707-424-5517.
Jasu - 1(Ma-1) 6(Ma-1A) 1(Mc-1A) 1(Mc-2A) 8(A/M32A-86) 1(707 Starting Unit).
Misc: 900 Ramp B747 and C5 Acft on Spot 902 Will Offset 5 Ft Northwest of Existing Taxi
Line Due to Wingtip Clnc.
Misc: Aircrew and Pax Trnspn Ltd to Initial Pickup, Final Drop-Off, and Msn Planning At
Base Ops. All Other Gnd Trnspn Reqs Will be Met Based on Msn Priority. Failure to
Comply May Result in Loss of Trnspn Support.
Misc: CTC Airfield Mgmt for Cur Bird Watch Cond. Bash Phase II is from 01 Oct - 30 Nov
and 01 Feb - 30 Apr. See Ap1 for Further Info.

