

KTEB

Teterboro  
Teterboro, NJ

1.00 mi SW of city    N40 51.0061'    W74 3.6500'    Mag Var: 12W

Nav aids:

Type:	ID:	Morse:	Frequency:	Radial:	Distance:
VOR/DME	TEB	— · —··	108.4	049	0 nm
VOR/DME	LGA	—· —· —·	113.1	307	10 nm
VOR/DME	CRI	—· —· —·	112.3	343	16 nm

Traffic Patterns (FAA):

TPA 1500' MSL for Large/Turbine Acft  
1000' MSL for All Others  
Left: 01,19,06,24

Runways:

Name:	Dimensions:	Material:	Condition:	Treatment:
01/19	6997X150	asphalt	good	grooved
Tree; 802' from end; 524' Left of center; 88' high; 7:1 clearance slope; Building; 9256' from end; 319' Left of center; 263' high; 34:1 clearance slope;				
06/24	6014X150	asphalt	good	grooved
Tree; 5950' from end; 1293' Left of center; 148' high; 38:1 clearance slope; Tree; 1705' from end; 462' Left of center; 77' high; 19:1 clearance slope;				

Tower:

Tower Hrs: 24  
For Radar Svc Blo 1800 Ft Ctc TEB Atct Freq 119.5.  
Said In Use. Operate Transponders With Altitude Reporting Mode And Ads-B (If Equipped)  
Enabled On All Airport Surfaces.

Charts: NACO: New York Sectional

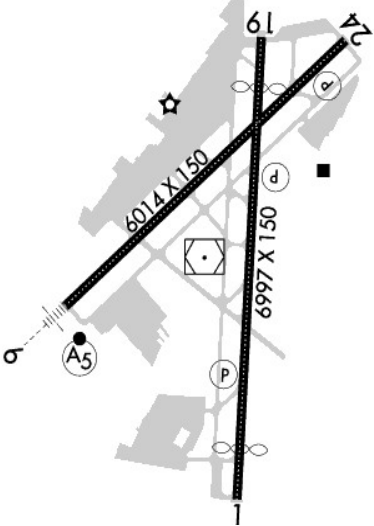
Fees: Deicing I, Deicing I, Deicing I, Deicing I, Deicing I, Deicing I, Deicing IV, Deicing IV, Deicing IV, Deicing IV, Deicing IV, Departure, Facility, GPU, GPU, GPU, GPU, Handling, Handling, Handling, Hangar, Infrastructure, Infrastructure, Infrastructure, International Trash, International Trash, Landing, Landing, Landing, Landing, Landing, Landing, Landing, Lavatory, Lavatory, Lavatory, Lavatory, Lavatory, Overnight, Overnight, Overnight, Parking, Ramp, Security, Security, Service Fee

Fuel: 100LL Low Lead Jet A

Communication Freqs:

127.6	App
128.05	Clearance Delivery
114.2	D-ATIS
132.85	D-ATIS
119.2	Dep
126.7	Dep
121.5	Emergency
121.9	Ground Control
124.35	JAIKE STAR
119.75	MAZIE STAR
124.55	MAZIE STAR
130.575	OPS
120.675	RAMP CTL
119.5	Tower
125.1	Tower(S)
119.5	VFR ADZY
127.6	WILKES-BARRE STAR

Elevation: 8 ft (2.4 m)



Phone: 201-807-4019

Weather: 201-473-3130 (ASOS)

Notes:

Year-round, 7 Days a Week, All  
Airport Operations Frequency 130.575.  
Acft & Helicopter Noise Abatement Rules in Eff; CTC Airport Noise Abatement Ofc  
201-393-0399/288-1775 for Copy of Procedures & Rules Prior to Arr. Ry 24 Noise Critical  
Ry Max Noise Limit of 80 Db Between 2200-0700 & 90 Db All Other Hrs.  
Acft Capable of Operating Abv 100,000 Pounds Must Submit Certification to Airport Manager  
Verifying Aircraft Operating Weight is Less Than 100,000 Lbs. Contact Airport Operations At  
201-288-1775 for Forms.  
All Acft Avoid Hospital 1.7 Mile North of Rwy 01/19.  
Clsd to Motorless Acft - Unctld Acft & Ultralight Activity Excep by Prior Permission.  
Deer and Bird Act on and In vicinity of Arpt.  
Dly Cons Const Act All Quadrants.  
Hel Operations Over Residential Areas Blo 1000 Ft MSL Should be Avoided.  
Stage 1 Acft not Permitted to Opr At Teterboro Arpt.  
Teb Rnav (Gps) X Rwy 06 is Prim Rnav Approach to Rwy 06.  
Arff Index B Equipment Coverage Provided.  
Pcr Value: 459/F/D/X/T  
Pcr Value: 343/F/D/X/T  
Rwy 01 67 Ft Tree District 1200 Ft, 400 Ft Right, 16:1 Based on Dthr.  
Rwy 01/19 Dthr Cntrln Lgts Out of service Indefly.  
Emas Non-Std Arresting Gear/System: Engineered Materials Arresting System (Emas) 250 Ft  
in Length by 170 Ft Width Lctd At Dep End Rwy 06.  
Engineered Materials Arresting System (Emas) 355 Ft in Length by 162 Ft Width Lctd At  
Dep End Rwy 19.  
Rwy 19 Approach Ratio 25:1 to Dthr.  
Engineered Materials Arresting System (Emas) 348 Ft in Length by 162 Ft Width Lctd At  
Dep End Rwy 24.

FBO's Summary:

Atlantic Aviation

Location: W  
Phone: 201-288-1740; Freq: ARINC: 132.000; Hours: 01/01-12/31, Sun-Sat, 00:00-23:59;

Signature Flight Support - South

Location: S  
Phone: 201-288-3555; Freq: ARINC: 130.600; Hours: 24/7

Signature Flight Support - West

Location: W  
Phone: 201-288-1880; Freq: ARINC: 130.150; Hours: 01/01-12/31, Sun-Sat, 00:00-00:00;

Signature Aviation (formerly Meridian Teterboro)

Location: W  
Phone: 201-288-5040; Freq: ARINC: 131.520; Hours: 01/01-12/31, Sun-Sat, 00:00-23:59;

Jet Aviation

Location: S  
Phone: 201-462-4000; Freq: ARINC: 131.425; Hours: 01/01-12/31, Sun-Sat, 00:00-24:59;

Signature Flight Support - East

Location: E  
Phone: 201-393-4041; Freq: ARINC: 130.150; Hours: 24/7



**Other (Non-FBO) Businesses Summary:**

**FlightSafety International**

Location: S  
Phone: 201-528-0100; Hours: By Appointment

**Consolidated Instrument Co. Inc.**

Location: SW  
Phone: 201-288-1189; Hours: 01/01-12/31, Mon-Fri, 08:00-17:00;

**Gama Aviation Engineering, Inc.**

Phone: 201-288-4011;

**Aviator.NYC**

Phone: 347-450-7519; Hours: By Appointment

**Duncan Aviation, Inc.**

Location: SW  
Phone: 201-288-1550; Hours: Irregular

**Bergen Community College**

Phone: 201-447-7100; Hours: By Appointment

