

KYKM

Yakima Air Trml/Mcallister Fld  
Yakima, WA

3.00 mi S of city    N46 34.0900'    W120 32.6438'    Mag Var: 16E

Nav aids:

Type:	ID:	Morse:	Frequency:	Radial:	Distance:
VORTAC	YKM	— · — · — · —	116.0	247	4 nm
VOR/DME	ELN	— · — · — · —	117.9	166	28 nm

Traffic Patterns:

No TPA reported. Assume 1,000 AGL.  
Left: 04,22,09,27

Runways:

Name:	Dimensions:	Material:	Condition:	Treatment:
04/22	3835X150	asphalt	poor	porous friction course
09/27	7604X150	asphalt	excellent	grooved

Tower:

Tower Hrs: 0600-2200  
Apch/Dep Ctl Svc Provdd By Seattle Artcc (Zse) On 132.6/269.35 (Yakima Rcg), When Geg Apch Clsd.  
During Hrs Atct Clsd; All Opns In Vicinity Of Airport Restricted To Acft With Vhf Radio Capability; Unless Emergency Exists Necessitating Uhf Equipped Acft To Land At Yakima.

Lighting:

When Air Traffic Control Tower Clsd Actvt HIRL Ry 09/27; MALSR Ry 27 - CTAF.

Charts: NACO: Seattle Sectional

Fees: After Hours, Deicing I, Deicing II, GPU, Landing, Lavatory, Overnight, Overnight, Parking, Ramp,

Fuel: 100LL Low-Lead, Jet A

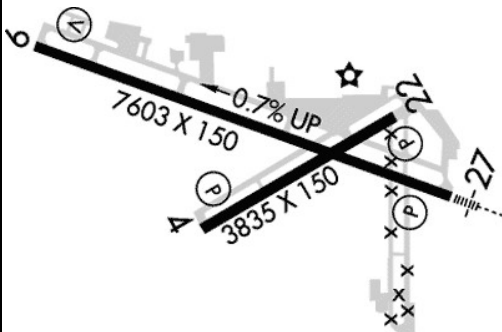
Phone: 509-575-6149

Weather: 509-426-3051 (ASOS)

Communication Freqs:

123.8	App/Dep IC
125.25	ATIS
121.9	Clearance Delivery
133.25	CTAF
121.5	Emergency
121.9	Ground Control
133.25	Tower
122.95	UNICOM

Elevation: 1099 ft (335.0 m)



Notes:

Security Directive SD-8G  
Year-round, 7 Days a Week, 0600 - 2000  
Be Alert: Birds in Vicinty of Yakima River 5 Nm E of Approach to 27.  
For Cd If Una to CTC on FSS Freq, CTC Seattle ARTCC at 253-351-3694.  
Main Terminal Ramp Restricted to Air Carrier Aircraft Only. Restricted Area Outlined with Red Markings.  
Reflectors on Twy C Only.  
Rwy 4/22 Mirl, REILs and Papis Out of service When Twr Closed.  
Surf Conds Unmon 2400-0500L  
Twy B Fm Approach End of Ry 22 to Twy A Restricted to Acft with Wingspans of 79 Ft or Less.  
Twy B Lights South of Rwy 9/27 Out of service When Twr Closed.  
Twy B1 and Twy B2 Twy Lights Out of service When Twr Closed.  
Ppr for Unsked Acr Operations with More Than 30 Psgr Seats Call Airport Manager 509-575-6149/6150.  
Pcr Value: 282/F/D/X/T  
Ry 04/22 Some Spalling and Raveling.  
Pcr Value: 814/F/C/X/T

FBO's Summary:

McCormick Air Center, LLC

Location: NW  
Phone: 509-248-1680; Hours: 01/01-12/31, Mon-Fri, 06:00-19:00; 01/01-12/31, Sat-Sun, 06:00-18:00;

McAllister Museum of Aviation

Location: NE  
Phone: 509-457-4933; Hours: 01/01-12/31, Mon-Sun, 00:00-00:00;

Other (Non-FBO) Businesses Summary:

McCormick Aircraft Maintenance, LLC

Location: N  
Phone: 509-249-1680; Hours: 01/01-12/31, Mon-Fri, 08:00-16:30;

Cub Crafters

Location: NE  
Phone: 509-248-9491; Hours: 01/01-12/31, Mon-Fri, 08:00-17:00;

Yakima Aerosport

Location: NE  
Phone: 509-453-3412; Hours: 01/01-12/31, Sun-Sat, 08:00-17:00;

