

3.00 mi S of city N41 23.6050' W70 36.8325' Mag Var: 15W

Nav aids:

| Type: | ID: | Morse: | Frequency: | Radial: | Distance: |
|---------|-----|---------|------------|---------|-----------|
| VOR/DME | MVY | — ... — | 114.5 | 212 | 0 nm |
| VOR/DME | ACK | — — — | 116.2 | 299 | 27 nm |
| VOT | PVD | — — — | 108.2 | 118 | 42 nm |

Traffic Patterns:

No TPA reported. Assume 1,000 AGL.
Right: 24,33 Left: 06,15

Runways:

| Name: | Dimensions: | Material: | Condition: | Treatment: |
|---|-------------|-----------|------------|--------------|
| 06/24 | 5504X100 | asphalt | fair | grooved |
| Trees; 700' from end; 350' Right of center; 14' high; 34:1 clearance slope; | | | | |
| 15/33 | 3327X75 | asphalt | good | no treatment |
| Trees; 1500' from end; 0' Both-Sides of center; 40' high; 34:1 clearance slope; | | | | |
| Trees; 2000' from end; 175' Right of center; 52' high; 34:1 clearance slope; | | | | |

Tower:

Tower Hrs: 0600-2200 MAY 15 - OCT 31; 0700-1700 NOV 1 MAY14

Lighting:

When Air Traffic Control Tower Clsd Actvt MALSR Rwy 24; REIL Rwy 33; HIRL Rwy 06/24; MIRL Rwy 15/33 - CTAF.

Charts: NACO: New York Sectional

Fees: After Hours, Deicing I, Deicing II, GPU, Landing, Preheat, Ramp

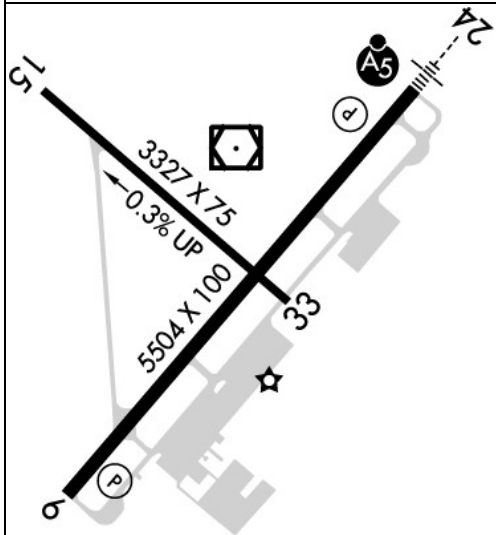
Fuel: 100LL Low-Lead, Jet A

Phone: 508-693-7022

Communication Freqs:

| | |
|--------|---------------------------------------|
| 133.75 | App/Dep |
| 126.25 | WX |
| 126.25 | ATIS |
| 119.7 | Clearance Delivery (WHEN TWR CLSD) |
| 124.35 | Clearance Delivery |
| 121.4 | CTAF |
| 121.5 | Emergency |
| 124.35 | Ground Control |
| 121.4 | Tower |
| 122.95 | UNICOM |

Elevation: 67 ft (20.4 m)



Noise Abatements:

| RnWY: | Arcrft: | App/Dep: | Noise Abatement: |
|-------|---------|----------|--|
| 06 | All | App | 2 Nautical Mile final over the pond (SILOC) |
| 24 | All | Dep | Climb to 2000' and turn over the pond |
| All | All | Both | Reduce power/prop setting when safe |
| All | All | Both | Remain off shore until final during morning/lights |

Weather: 508-696-6988 (ASOS)

Notes:

Year-round, 7 Days a Week, All
Airport Has Noise Abatement Procs. CTC Operations 508-693-7022. Avoid Residential Areas Southwest of Arpt.
Hels Prohibited Fm Hover Taxi, Ldg and Tkof Fm T-Hngrs.
Twy D Fm Rwy 06 to Rwy 15 Clsd to Acft with Ovr 9 Pax.
24-Hr Prior Permission Required for Unsked Acr Operations with More Than 9 Pax Seats-Call Airport Manager 508-693-7022.
Pcr Value: 200/F/A/X/T
Not Avbl for Skedd Acr Operations More Than 9 Pax Seats or Unsked Acr Operations At Least 31 Pax Seats.
Pcr Value: 90/F/A/X/T
Prkg Fee All Acft. Ldg Fee All Acft Over 4000 Lbs.

FBO's Summary:

Marthas Vineyard Airport

Location: CTR
Phone: 508-693-7022; Hours: 01/01-12/31, Mon-Sun, 06:00-22:00;

Other (Non-FBO) Businesses Summary:

New England Aircraft Detailing

Phone: 508-640-5832; Hours: 24/7

