

KSFB

Orlando Sanford Intl
Orlando, FL

16.00 mi NE of city N28 46.6307' W81 14.0948' Mag Var: 05W

Nav aids:

Type:	ID:	Morse:	Frequency:	Radial:	Distance:
VORTAC	ORL	— ·· ··	112.2	021	15 nm
VORTAC	OMN	— — ··	112.6	192	32 nm

Traffic Patterns:

No TPA reported. Assume 1,000 AGL.
Right: 09C,27R,09R,36 Left: 09L,18 (Assumed Left: 27C,27L)

Runways:

Name:	Dimensions:	Material:	Condition:	Treatment:
09C/27C	3578X75	asphalt	fair	no treatment
Trees;	2020' from end;	65' Left of center;	53' high;	34:1 clearance slope;
Trees;	2245' from end;	125' Left of center;	51' high;	40:1 clearance slope;
09L/27R	11002X150	asphalt	good	grooved
Trees;	1000' from end;	280' Left of center;	49' high;	24:1 clearance slope;
09R/27L	5839X75	asphalt	fair	no treatment
Trees;	3475' from end;	300' Right of center;	65' high;	50:1 clearance slope;
Trees;	1875' from end;	95' Left of center;	37' high;	45:1 clearance slope;
18/36	6002X150	asphalt	fair	grooved
Trees;	1450' from end;	10' Right of center;	35' high;	35:1 clearance slope;
Trees;	1005' from end;	295' Right of center;	32' high;	25:1 clearance slope;

Tower:

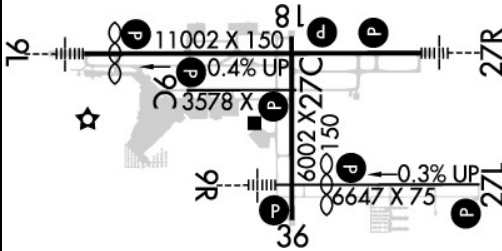
Tower Hrs: 0630-2300
123.975 CInc Del Avbl When Advertised On Atis.
Said In Use. Operate Transponders With Altitude Reporting Mode And Ads-B (If Equipped)
Enabled On All Airport Surfaces.

Charts: NACO: Jacksonville Sectional

Communication Freqs:

124.8	ALYNA STAR
119.775	App/Dep (SOUTH)
135.3	App/Dep (NORTH)
125.975	WX
125.975	ATIS
123.975	Clearance Delivery
120.3	CTAF
121.5	Emergency
124.8	GOOFY STAR
128.375	GOOFY STAR
121.35	Ground Control
134.05	JOKRS STAR
134.05	MINEE STAR
134.05	PRICY STAR
128.375	RIDES STAR
135.3	SANFORD DP
128.675	SHREK STAR
134.05	SHREK STAR
120.3	Tower
135.25	Tower(S)

Elevation: 55 ft (16.8 m)



Communication Freqs:

119.775 CLASS C(SOUTH OF SFB WITHIN 20 NM 3500 FT &)
 135.3 CLASS C(NORTH OF SFB WITHIN 20 NM 3500 FT & B)
 121.35 Clearance Delivery(WHEN SFB TWR CLSD)
 119.775 TTHOR STAR 118.85 TTHOR STAR

Lighting:

When Air Traffic Control Tower Clsd Actvt MALSR Rwy 9R & 27R; PAPI Rwy 09L, 27R, 09C, 27C, 09R, 27L, 18, & 36; HIRL Rwy 09L/27R, 09R/27L; MIRL Rwy 18/36 & 9C/27C - CTAF.

Fees: After Hours, GPU, Handling, Landing, Lavatory, Overnight, Ramp

Fuel: 100LL Low-Lead, Jet A

Phone: 407-585-4101

Weather: 407-321-9384 (ASOS)

Notes:

Year-round, 7 Days a Week, All
All Acft Arr with Less Than 30 Seats to Clear Customs CTC 129.075 Prior to Lndg.
Due to Facility Constraints That Limit Ability to Accommodate Diverted Flights Aircraft
Operators to Contact the Airport At 407-585-4101 for Prior Coordination, Except in Case of
A Declared In-Flight Emergency
Flt Trng Act in Tfc Pat & Lcl Area.
For Tkof Tbjts Use FAA Nadp-2 Comparable Acr Operations Specs Profile or Nbaa Profile.
on Visual Apchs Pilots are Requested to Dia Ldg Gear Extn Til Oprly Nec.
Lrg And/Or Flocking Birds; Inclg Eagles In vicinity of Arpt.
Paew on Trml Ramp Wi 75 Ft of Twy C Cntrln When Acft Using Gates 7 or 8.
Twy K Clsd to Acft with Wingspan Gtr Than 79 Ft.
Twy K1 Clsd to All Acft Perm.
Twy P Clsd to Acft with Wingspan Greater Than 40 Ft.
Clsd to Repetitive Acr Trng Operations Excp 24 Hr Prior Permission Required - Airport
Manager 407-585-4000 Ext 4006 or 407-585-4119. Arff Index E Avbl with 24 Hr Prior
Permission Required (Charter Carriers on Published Sked Exempt).
Nicole Martz (President & Ceo)
Rwy 9C/27C not Avbl for Sked Acr Operations with More Than 9 Psgr Seats or Unsked
Acr At Least 31 Psgr Seats.
Prim Acr Operations Rwy.
Pri Flt T Rwy. Rwy 9R/27L not Avbl for Sked Acr Operations with More Than 9 Pax Seats
or Unsked Acr At Least 31 Pax Seats.
Cntr 75 Ft Good Cond; Outer Edge Fair Cond.
Prim Acr Operations Rwy.
Rwy 09L Approach 50:1 to Mkd Dthr.

FBO's Summary:

Million Air Orlando

Location: SW
Phone: 407-585-6300; Freq: ARINC: 130.750; Hours: 01/01-12/31, Sun-Sat, 06:00-22:00;



Other (Non-FBO) Businesses Summary:

L3Harris Flight School

Location: N
Phone: 407-330-7020; Hours: 01/01-12/31, Mon-Fri, 08:00-17:00;

CE Avionics, Inc.

Location: CTR
Phone: 407-323-0200; Hours: 01/01-12/31, Mon-Fri, 08:00-17:00;

Orlando Sanford Aircraft Sales, Inc.

Location: SW
Phone: 800-276-6661; Hours: 01/01-12/31, Mon-Sun, 08:00-17:00;

Constant Aviation, LLC

Location: N
Phone: 407-321-8880; Hours: 01/01-12/31, Sun-Sat, 06:00-22:00;

Propellerhead Aviation, Inc

Location: S
Phone: 888-777-7207; Hours: 01/01-12/31, Sun-Sat, 07:00-20:00;

Avocet Aviation Services

Location: N
Phone: 407-585-6201; Hours: 01/01-12/31, Mon-Fri, 08:00-17:00;

AMI Aviation Services, LLC

Location: SE
Phone: 407-585-6134; Hours: 01/01-12/31, Mon-Fri, 07:00-17:00;

Advanced Composite Structures

Location: SE
Phone: 407-585-6111; Hours: 01/01-12/31, Mon-Fri, 08:00-17:00;

Pneu Tech Aerospace

Location: SE
Phone: 407-585-3670; Hours: By Appointment

Sanford Aircraft Flight Training

Phone: 407-777-5328;

D&J Aviation

Location: SE
Phone: 407-590-2550; Hours: 01/01-12/31, Mon-Fri, 08:00-17:00;

