

BINGHAMTON

GREATER BINGHAMTON/EDWIN A LINK FLD (BGM)(KBBGM) 7 N UTC-5(-4DT)

NEW YORK

H-10H, 11C, 12J, L-30J, 32F, 33A

IAP, AD

N42°12.51' W75°58.78'

1636 B TPA-2436(800) Class I, ARFF Index B NOTAM FILE BGM MON Airport

RWY 16-34: H7305X150 (ASPH-GRVD) S-112, D-147, 2S-159,

2D-221 PCN 45 F/D/X/T HIRL 0.9% up NW

RWY 16: MALSR, PAPI(P2L)—GA 3.0° TCH 61'. RVR-TR Thld dsplcd 400'. Antenna.**RWY 34:** MALSR, PAPI(P2L)—GA 3.0° TCH 64'. RVR-TR Thld dsplcd 205'.**RWY 10-28:** H5001X150 (ASPH-GRVD) S-81, D-103, 2S-159,

2D-168 PCN 32 F/D/X/T MIRL 0.4% up W

RWY 10: VASI(V4L)—GA 3.0° TCH 53'.**RWY 28:** REIL, VASI(V4L)—GA 3.0° TCH 45'.**RUNWAY DECLARED DISTANCE INFORMATION****RWY 10:** TORA-5001 TODA-5001 ASDA-5001 LDA-5001**RWY 16:** TORA-7305 TODA-7305 ASDA-7305 LDA-6905**RWY 28:** TORA-5001 TODA-5001 ASDA-5001 LDA-5001**RWY 34:** TORA-7305 TODA-7305 ASDA-7305 LDA-7100**ARRESTING GEAR/SYSTEM****RWY 16:** EMAS**RWY 34:** EMAS**SERVICE:** S2 FUEL 100LL, JET A OX 3, 4 LGT When twr clsd

ACTIVATE MALSR Rwy 16 and Rwy 34, HIRL Rwy 16-34, MIRL Rwy 10-28 and twy lgts—CTAF.

AIRPORT REMARKS: Attended continuously. Lgtd structure 118' AGL 2000' south of AER 10. Bird activity on and invof arpt.

PPR 12 hrs for unscheduled air carrier ops with more than 9 passenger seats 0400-1100Z‡ call arpt manager

607-763-4474. ARFF avbl 1030-0500Z‡ and/or until 15 min after the last scheduled air carrier opr. Twr unable to see

hard sfc south of FBO hangar. FBO SVCS AVBL 0930-0300Z‡ SUN to SAT. For AFT HRS FBO SVCS CTC 607-643-1640.

Ldg fee for multi-engine and turbine acct over 4000 lbs. U.S. Customs user fee arpt.

AIRPORT MANAGER: 607-763-4471**WEATHER DATA SOURCES:** ASOS (607) 729-8335**COMMUNICATIONS:** CTAF 119.3 ATIS 128.15 UNICOM 122.95

BINGHAMTON RCO 122.1R 112.2T (BUFFALO RADIO)

Ⓡ BINGHAMTON APP/DEP CON 118.6 (Sfc-5000') 127.55 (6000-8000') (1100-0500Z‡)

Ⓡ NEW YORK CENTER APP/DEP CON 132.175 (0500-1100Z‡)

BINGHAMTON TOWER 119.3 (1100-0500Z‡) GND CON 121.9 CLNC DEL 125.05

CLEARANCE DELIVERY PHONE: For CD if una to ctc on FSS freq, ctc New York ARTCC at 631-468-1425.**AIRSPACE:** CLASS D svc 1100-0500Z‡; other times CLASS E.

TRSA svc ctc APP CON

RADIO AIDS TO NAVIGATION: NOTAM FILE BUF.

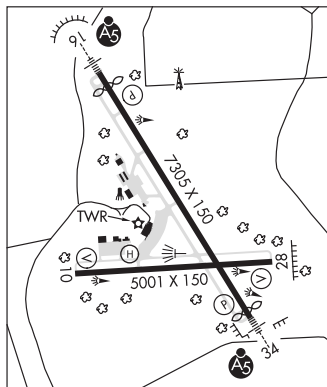
BINGHAMTON (L) VOR/DME 112.2 CFB Chan 59 N42°09.45' W76°08.19' 076° 7.6 NM to fld. 1583/10W.

VOR unusable:

023°-033° byd 15 NM blo 6,000'

ILS 110.3 I-AAJ Rwy 16. Class IB. Unmonitored when twr clsd.

ILS 110.3 I-BGM Rwy 34. Class IA. Unmonitored when twr clsd.

COMM/NAV/WEATHER REMARKS: For Clnc Del when twr clsd ctc Buffalo Radio on CFB RCO 122.1R 112.2T.**HELIPAD HI:** H54X54 (ASPH) PERIMETER LGTS**HELIPORT REMARKS:** Helipad located at the intersection of Twy L and the west apron.**BLUE HERON** (See GALLUPVILLE on page 200)