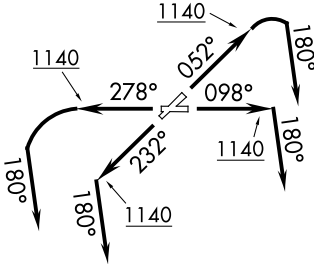


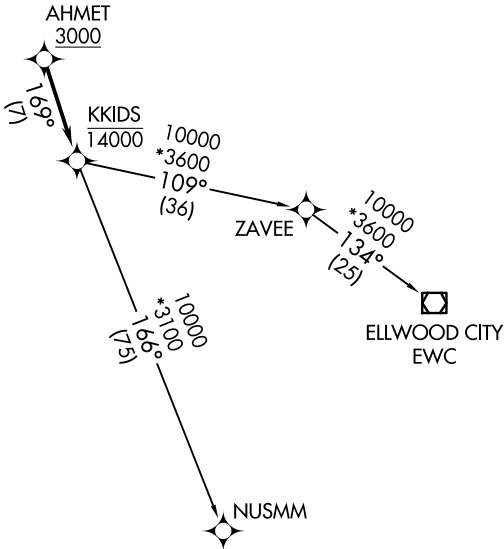
AWOS-3PT 119.225
CTAF 122.725
CLEVELAND DEP CON
125.35 346.325

TOP ALTITUDE:
ASSIGNED BY ATC



TAKEOFF MINIMUMS:
Rwys 5, 10, 23, 28: Standard
with minimum climb of 500'
per NM to 1140.

NOTE: RNAV 1.
NOTE: RADAR required.
NOTE: DME/DME/IRU or GPS required.



NOTE: Chart not to scale.



DEPARTURE ROUTE DESCRIPTION

TAKEOFF RUNWAY 5: Climb on heading 052° to 1140, then right turn on heading 180° or as assigned by ATC for RADAR vectors to cross AHMET at or above 3000, thence....
TAKEOFF RUNWAY 10: Climb on heading 098° to 1140, then on heading 180° or as assigned by ATC for RADAR vectors to cross AHMET at or above 3000, thence....
TAKEOFF RUNWAY 23: Climb on heading 232° to 1140, then on heading 180° or as assigned by ATC for RADAR vectors to cross AHMET at or above 3000, thence....
TAKEOFF RUNWAY 28: Climb on heading 278° to 1140, then left turn on heading 180° or as assigned by ATC for RADAR vectors to cross AHMET at or above 3000, thence....

....on track 169° to cross KKIDS at or below 14000, then on (transition).
Maintain altitude assigned by ATC, expect filed altitude ten minutes after departure.

ELLWOOD CITY TRANSITION (AHMET4.EWC)
NUSMM TRANSITION (AHMET4.NUSMM)

EC-2, 17 APR 2025 to 15 MAY 2025

EC-2, 17 APR 2025 to 15 MAY 2025