

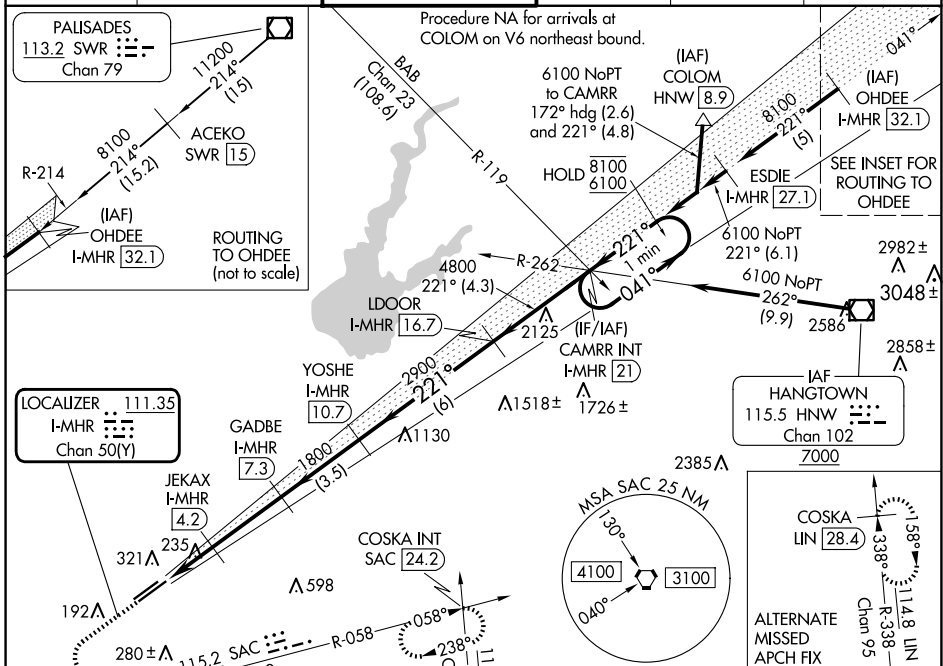
LOC/DME I-MHR 111.35 Chan 50(Y)	APP CRS 221°	Rwy Idg TDZE Apt Elev	11301 98 98
--	------------------------	-----------------------------	--

ILS Z or LOC Z RWY 22L

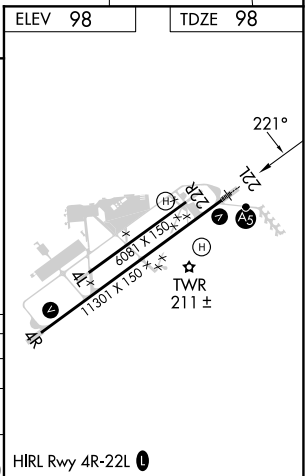
SACRAMENTO MATHER (MHR)

DME required for LOC only.	MALSR	MISSED APPROACH: Climb to 1000, then climbing left turn to 3500 on heading 090° and SAC VORTAC R-058 to COSKA INT/ SAC 24.2 DME and hold, continue climb-in-hold to 3500.
<p>▼ For inop ALS, increase S-ILS Cat E visibility to RVR 4000 and S-LOC Cat C/D/E visibility to RVR 6000. Circling NA northwest of Rwy 4R-22L.</p> <p>*RVR 1800 authorized with use of FD or AP or HUD to DA (NA when using Sacramento Exec altimeter setting).</p>		

ATIS 118.325	NORCAL APP CON 127.4 317.5	MATHER TOWER * 120.65 (CTAF) 282.25	GND CON 121.85 307.9	CLNC DEL 121.85 307.9	UNICOM 122.95
------------------------	--------------------------------------	---	--------------------------------	---------------------------------	-------------------------



ELEV 98	TDZE 98
<p>1000 3500</p> <p>hdg 090°</p> <p>SAC R-058</p> <p>COSKA INT</p> <p>One Minute Holding Pattern</p>	<p>YOSHE I-MHR 10.7</p> <p>LDOOR I-MHR 16.7</p> <p>CAMRR INT I-MHR 21</p> <p>8100 221°</p> <p>8100 041°</p> <p>6100 221°</p> <p>6100 221°</p> <p>4800 221°</p> <p>2900 221°</p> <p>1800 221°</p> <p>800 221°</p> <p>GS 3.00° TCH 56</p>
<p>1.1 1 NM</p> <p>3.1 NM</p> <p>3.5 NM</p> <p>6 NM</p> <p>4.3 NM</p>	<p>JEKAX I-MHR 4.2</p> <p>GADBE I-MHR 7.3</p> <p>YOSHE I-MHR 10.7</p> <p>LDOOR I-MHR 16.7</p> <p>041°</p> <p>8100</p> <p>221°</p> <p>6100</p>
CATEGORY	A B C D E
S-ILS 22L*	298/24 200 (200-½)
S-LOC 22L	500/24 402 (500-½) 500/40 402 (500-¾)
CIRCLING	560-1 462 (500-1) 600-1½ 800-2¼ 800-2½ 502 (600-1½) 702 (800-2¼) 702 (800-2½)



SW-2, 17 APR 2025 to 15 MAY 2025

SW-2, 17 APR 2025 to 15 MAY 2025