

APP CRS Rwy Idg **4835**  
 TDZE **930**  
 Apt Elev **952**

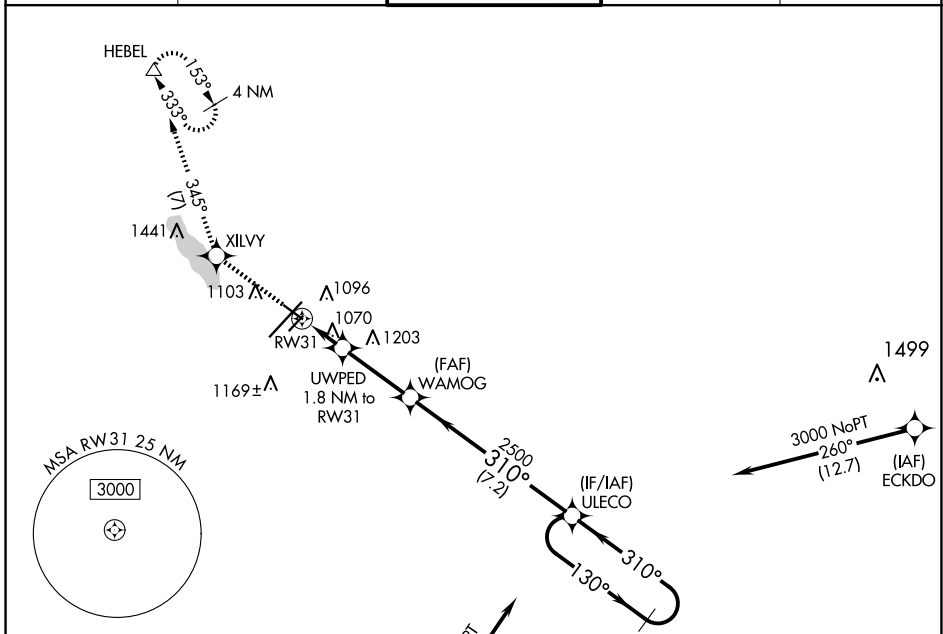
# RNAV (GPS) RWY 31

BATTLE CREEK EXEC AT KELLOGG FLD (BTL)

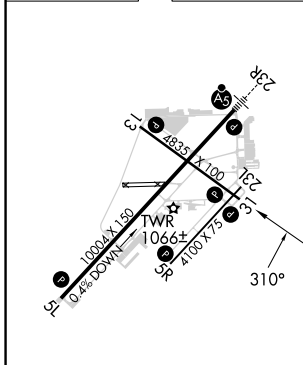
RNP APCH. MISSED APPROACH: Climb to 3000 direct XILVY and on 345° track to HEBEL and hold.

⚠ Cirdling NA to Rwys 5R and 23L. Rwy 31 helicopter visibility reduction below 1 SM NA. Procedure NA at night.

ATIS <b>128.325</b>	GREAT LAKES APP CON★ <b>119.2 239.25</b>	BATTLE CREEK TOWER★ <b>126.825</b> (CTAF)	GND CON <b>121.7</b>	UNICOM <b>122.95</b>
------------------------	---	--	-------------------------	-------------------------



ELEV 952 **D** TDZE 930



3000	XILVY	tr 345°	HEBEL	4 NM Holding Pattern
UWPED 1.8 NM to RWY 31	WAMOG	2500	ULECO	310° 4 NM
RWY 31 1540	TCH 40 3.00	1540	2500	310°
VGSI and descent angles not coincident (VGSI Angle 3.00/TCH 25).				
1.8 NM 3 NM 7.2 NM				

CATEGORY	A	B	C	D
LNNAV MDA	1320-1	390 (400-1)	1320-1½	390 (400-1½)
<b>C</b> CIRCLING	1420-1 468 (500-1)	1480-1 528 (600-1)	1520-1½ 568 (600-1½)	1520-2 568 (600-2)

HIRL Rwy 5L-23R  
 MRL Rwy 13-31 and 5R-23L  
 REL Rwy 5L, 5R, 13, 23L and 31L

EC-1, 15 MAY 2025 to 12 JUN 2025

EC-1, 15 MAY 2025 to 12 JUN 2025