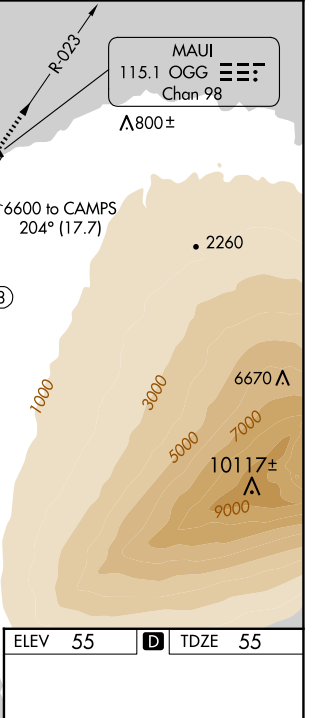
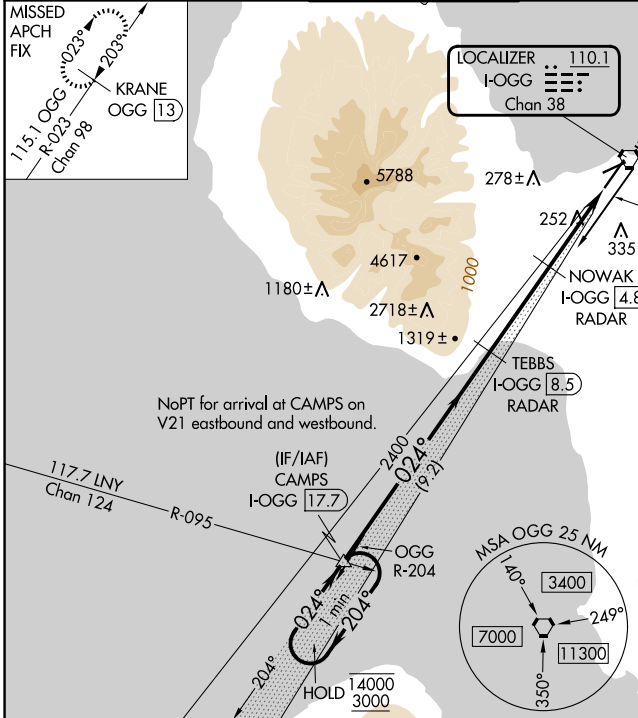


LOC/DME I-OGG <b>110.1</b> Chan <b>38</b>	APP CRS <b>024°</b>	Rwy ldg TDZE Apt Elev <b>55</b> <b>55</b>
---	------------------------	---

# ILS Y or LOC Y RWY 2

KAHULUI (OGG)(PHOG)

DME required.		MALSR 	MISSED APPROACH: Climb to 3000 on OGG VORTAC R-023 to KRANE/OGG 13 DME and hold.				
 For inop ALS, increase S-ILS 2 Cat E visibility to 3/4 SM, and S-LOC 2 Cats C/D/E visibility to 1 1/8 SM.			ATIS <b>128.6</b>	HCF APPROACH <b>120.2 322.4</b> (NORTH) <b>119.5 225.4</b> (SOUTH)	MAUI TOWER ★ <b>118.7</b> (CTAF) <b>0 279.6</b>	GND CON <b>121.9 279.6</b>	CLNC DEL <b>120.6 290.5</b>

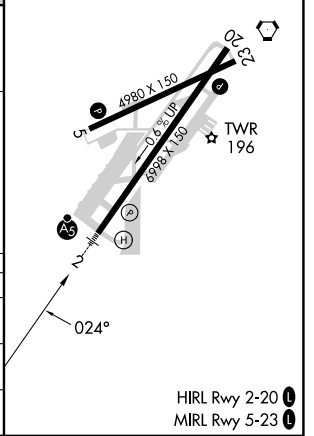


ELEV <b>55</b>	<b>D</b> TDZE <b>55</b>
----------------	-------------------------

Use I-OGG DME when on the localizer course. VGSI and ILS glidepath not coincident (VGSI Angle 3.00/TCH 77).

One Minute Holding Pattern	CAMPS I-OGG 17.7	TEBBS I-OGG 8.5 RADAR	NOWAK I-OGG 4.8 RADAR	I-OGG 2.5	I-OGG 1.3	3000 OGG R-023	KRANE OGG 13
14000 ← 204°	3000 → 024°	2400	2400	1220			
GS 3.00° TCH 62							
	9.2 NM	3.7 NM	2.3 NM	1.2			

CATEGORY	A	B	C	D	E
S-ILS 2	275-1/2 220 (300-1/2)				
S-LOC 2	520-1/2	465 (500-1/2)	520-1	465 (500-1)	
CIRCLING	520-1 465 (500-1)	620-1 565 (600-1)	740-2 685 (700-2)	1140-3 1085 (1100-3)	1720-3 1665 (1700-3)



PAC, 17 APR 2025 to 12 JUN 2025

PAC, 17 APR 2025 to 12 JUN 2025

HIRL Rwy 2-20  
MIRL Rwy 5-23