

# KINGDOM FIVE DEPARTURE

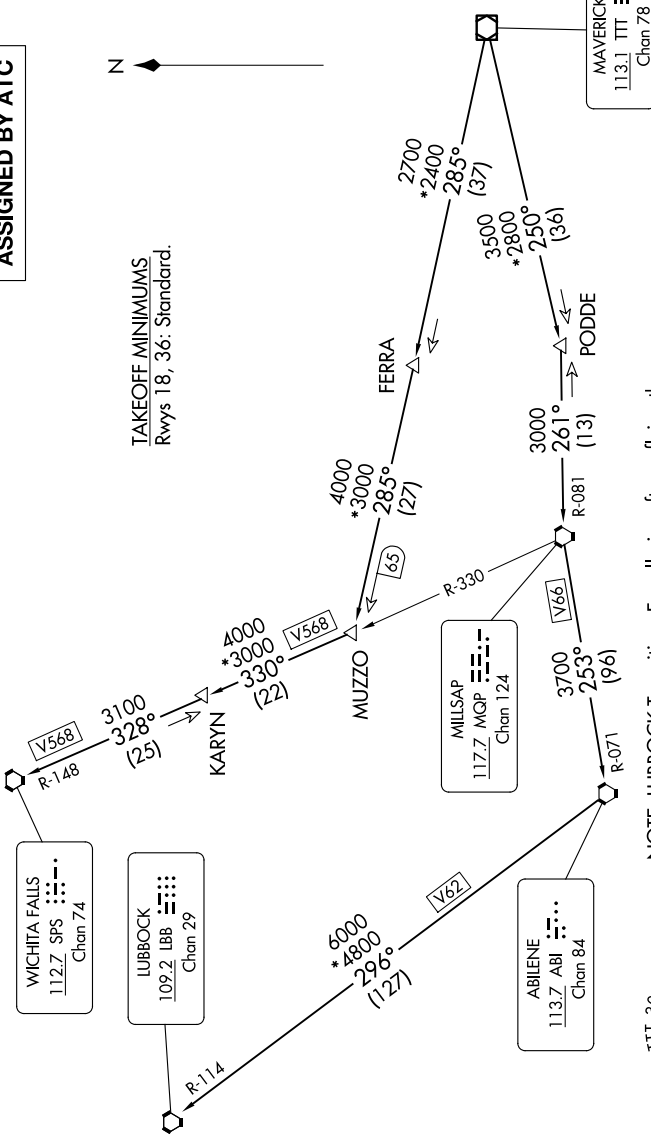
LONE STAR DEP CON  
125.2 343.65  
MESQUITE TOWER ★  
120.3 (CTAF)

**TOP ALTITUDE:  
ASSIGNED BY ATC**

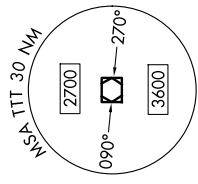
RADAR and DME required.



TAKEOFF MINIMUMS  
Rwys 18, 36: Standard.



- NOTE: LUBBOCK Transition: For all aircraft overlying the MQP VORTAC westbound or direct.
- NOTE: MILLSAP Transition: For all aircraft overlying the MQP VORTAC westbound or direct.
- NOTE: PODDE Transition: ATC assigned.
- NOTE: WICHITA FALLS Transition: For all aircraft landing within the Wichita Falls terminal area or overlying the SPS VORTAC.
- NOTE: For all aircraft requesting 17000 and below.



(CONTINUED ON FOLLOWING PAGE)

SC-2, 15 MAY 2025 to 12 JUN 2025

SC-2, 15 MAY 2025 to 12 JUN 2025