

LOC/DME I-JWN <b>110.3</b> Chan <b>40</b>	APP CRS <b>198°</b>	Rwy Idg TDZE Apt Elev	<b>6001</b> <b>501</b> <b>501</b>
---	------------------------	-----------------------------	---

# ILS or LOC RWY 20

JOHN C TUNE (JWN)

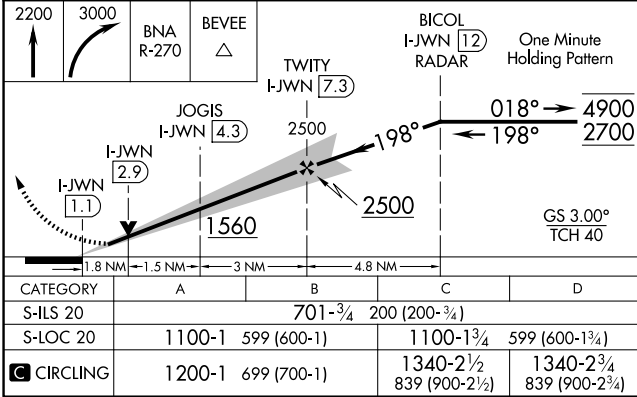
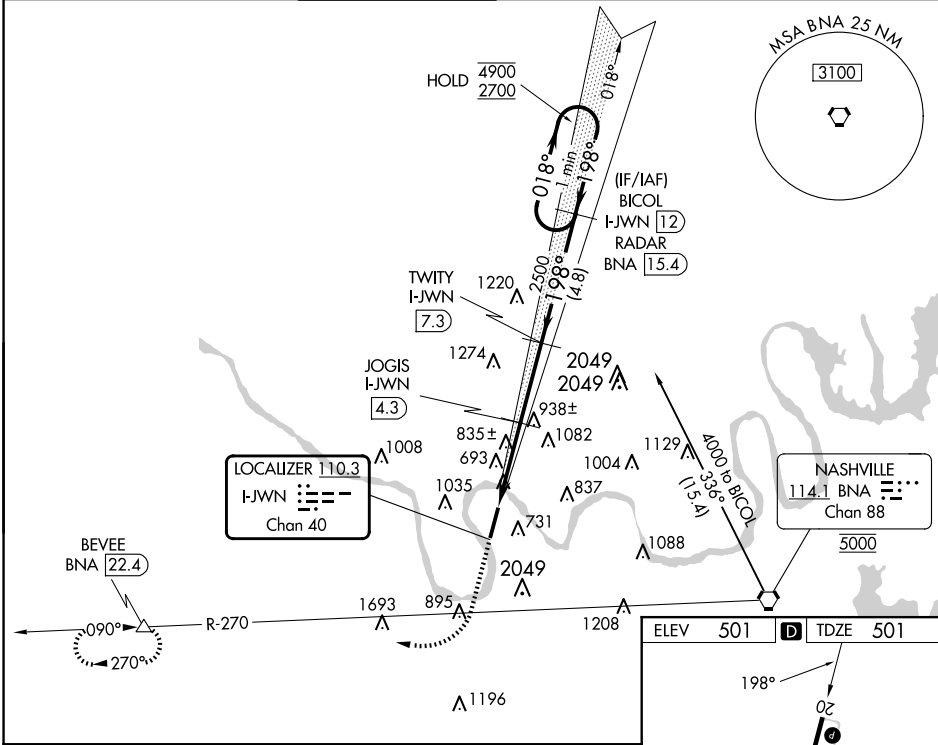
DME required.

**V** Circling NA east of Rwy 2-20. VDP NA when using Nashville Intl altimeter setting.

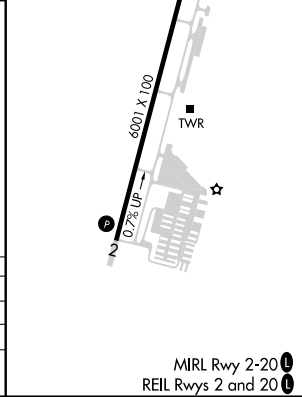
**▲ NA** When local altimeter setting not received, use Nashville Intl altimeter setting and increase S-ILS 20 DA to 738 feet, increase all MDAs 40 feet.

**MISSED APPROACH:** Climb to 2200 then climbing right turn to 3000 on BNA VORTAC R-270 to BEVEE/BNA 22.4 DME and hold.

ATIS <b>127.075</b>	NASHVILLE APP CON <b>119.35 372.0</b>	JOHN TUNE TOWER ★ <b>119.45 (CTAF)</b> <b>0</b>	GND CON <b>121.7</b>	CLNC DEL <b>121.7</b>	CLNC DEL <b>124.55</b> (when twr closed)	UNICOM <b>122.7</b>
------------------------	--	--	-------------------------	--------------------------	--	------------------------



ELEV 501	<b>D</b>	TDZE 501
----------	----------	----------



SE-1, 15 MAY 2025 to 12 JUN 2025

SE-1, 15 MAY 2025 to 12 JUN 2025