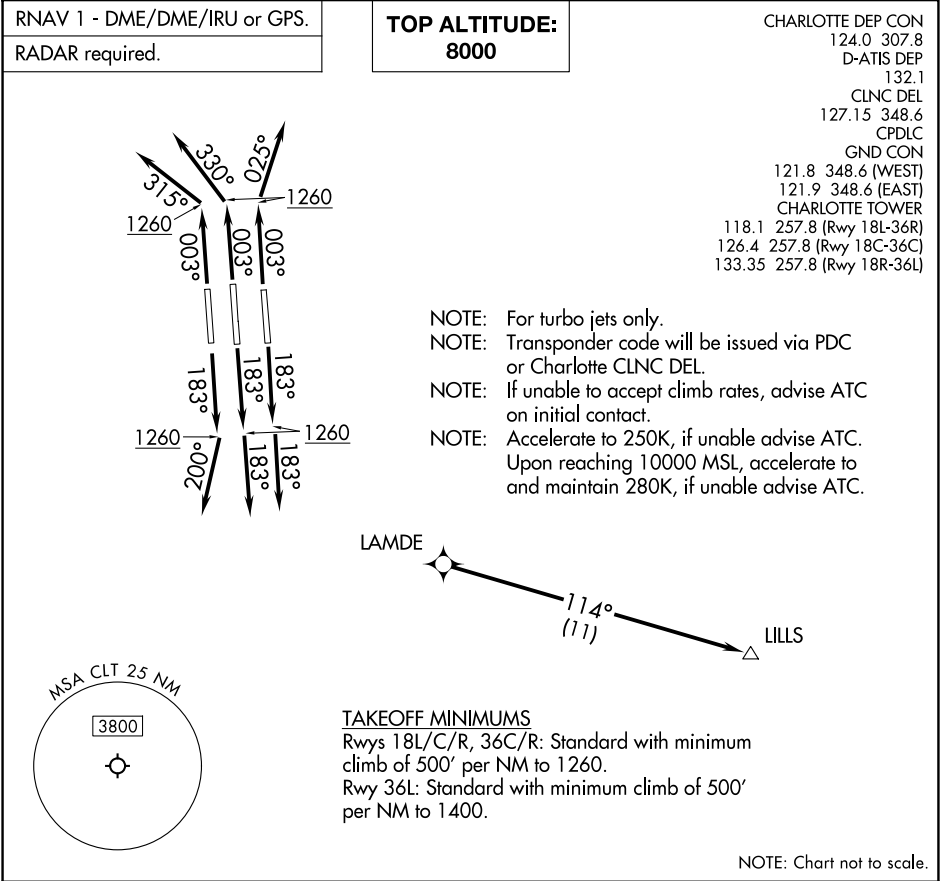


LILLS THREE DEPARTURE (RNAV)



SE-2, 15 MAY 2025 to 12 JUN 2025

SE-2, 15 MAY 2025 to 12 JUN 2025

| |
|---|
| <div><p>DEPARTURE ROUTE DESCRIPTION</p><p>SEE ADDITIONAL REQUIREMENTS ON AAUP</p><p><u>TAKEOFF RUNWAYS 18L/C:</u> Climb on heading 183° to 1260, then on heading 183° or as assigned by ATC on RADAR vectors to LAMDE, thence. . .</p><p><u>TAKEOFF RUNWAY 18R:</u> Climb on heading 183° to 1260, then on heading 200° or as assigned by ATC on RADAR vectors to LAMDE, thence. . .</p><p><u>TAKEOFF RUNWAY 36L:</u> Climb on heading 003° to 1260, then on heading 315° or as assigned by ATC on RADAR vectors to LAMDE, thence. . .</p><p><u>TAKEOFF RUNWAY 36C:</u> Climb on heading 003° to 1260, then on heading 330° or as assigned by ATC on RADAR vectors to LAMDE, thence. . .</p><p><u>TAKEOFF RUNWAY 36R:</u> Climb on heading 003° to 1260, then on heading 025° or as assigned by ATC on RADAR vectors to LAMDE, thence. . .</p><p>. . .on depicted route to LILLS. Maintain 8000. Expect clearance to filed altitude within 10 minutes after departure.</p></div> |
|---|

LILLS THREE DEPARTURE (RNAV)