

VORTAC IPL 115.9 Chan 106	APP CRS 311°	Rwy Idg TDZE Apt Elev	N/A N/A -54
-----------------------------------------------	------------------------	-----------------------------	----------------------------------------

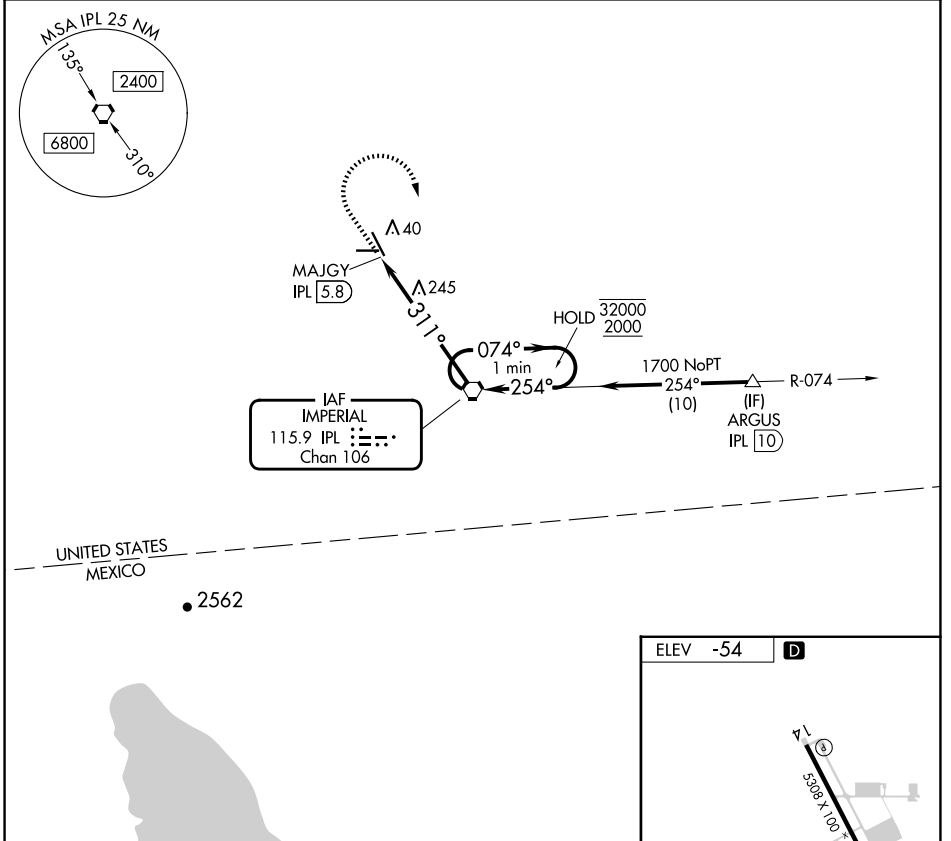
VOR-A
IMPERIAL COUNTY (IPL)

DME required for procedure entry at ARGUS.

▽ Circling to Rwy 32 NA at night. When local altimeter setting not received, procedure NA.

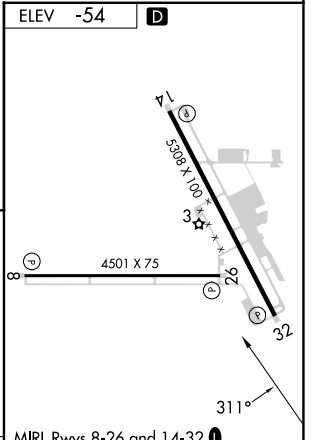
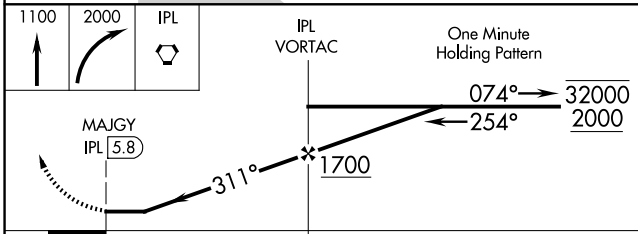
▲ MISSED APPROACH: Climb to 1100 then climbing right turn to 2000 direct IPL VORTAC and hold.

ASOS 132.175	YUMA CERAP 128.55 292.2	UNICOM 122.7 (CTAF) 0
------------------------	-----------------------------------	---------------------------------



SW-3, 15 MAY 2025 to 12 JUN 2025

SW-3, 15 MAY 2025 to 12 JUN 2025



CATEGORY	A		B		C	D	FAF to MAP 5.8 NM					
	500-1		554 (600-1)		560-1¾ 614 (700-1¾)	560-2 614 (700-2)	Knots	60	90	120	150	180
CIRCLING	500-1		554 (600-1)		560-1¾ 614 (700-1¾)	560-2 614 (700-2)	Min:Sec	5:48	3:52	2:54	2:19	1:56