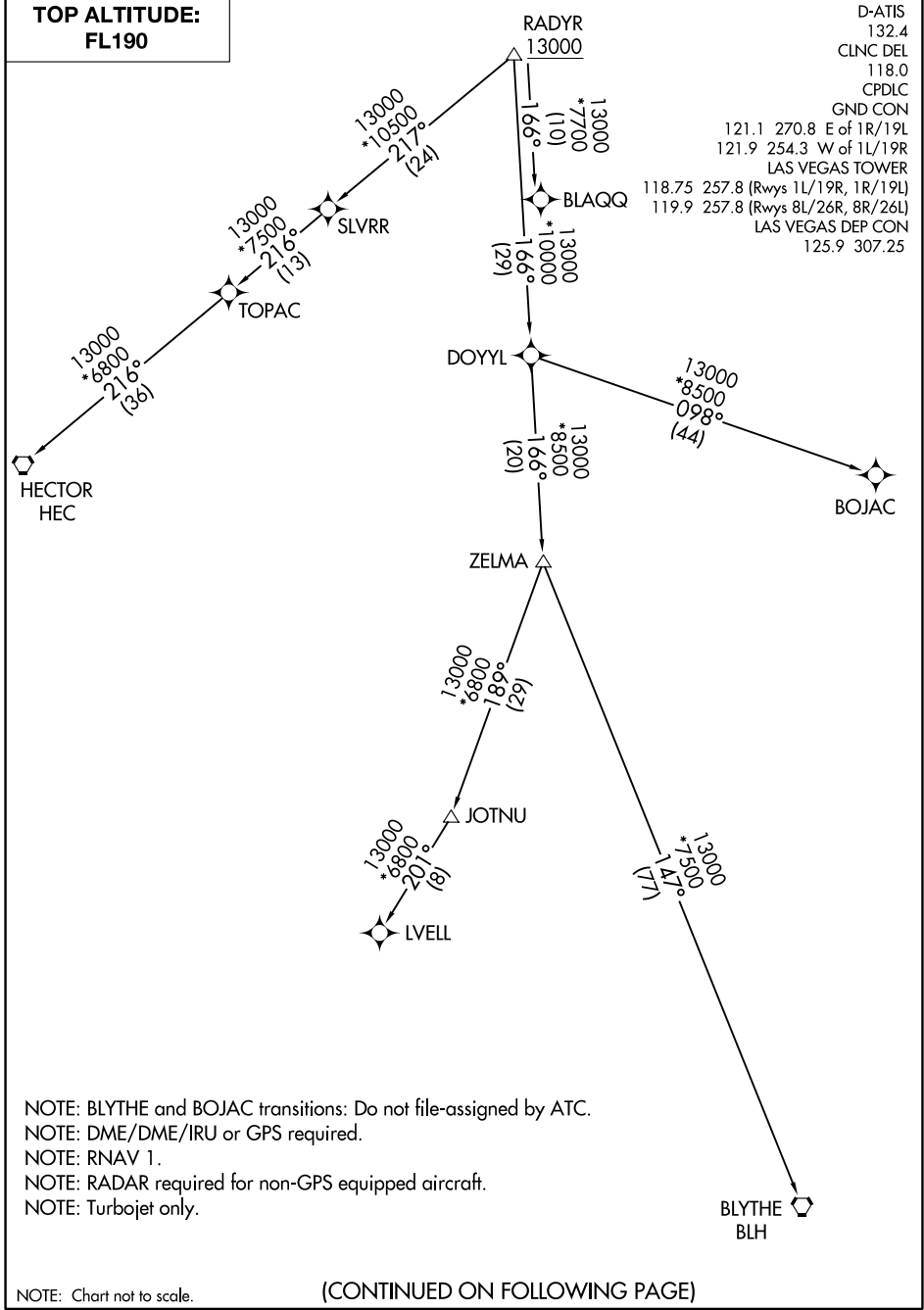


# RADYR TWO DEPARTURE (RNAV) Transition Routes

**TOP ALTITUDE:  
FL190**



SW-4, 15 MAY 2025 to 12 JUN 2025

SW-4, 15 MAY 2025 to 12 JUN 2025

NOTE: BLYTHE and BOJAC transitions: Do not file-assigned by ATC.  
 NOTE: DME/DME/IRU or GPS required.  
 NOTE: RNAV 1.  
 NOTE: RADAR required for non-GPS equipped aircraft.  
 NOTE: Turbojet only.

NOTE: Chart not to scale.

(CONTINUED ON FOLLOWING PAGE)

# RADYR TWO DEPARTURE (RNAV) Transition Routes