

EC-1, 12 JUN 2025 to 10 JUL 2025

DETROIT DEP CON
132.35 284.0
ATIS
125.025
CINC DEL
118.25
GND CON
121.9
PONTIAC TOWER ★
120.5 (CTAF)

RNAV 1 - DME/DME/IRU or GPS.
RADAR required.
RADAR required for non-GPS equipped aircraft.

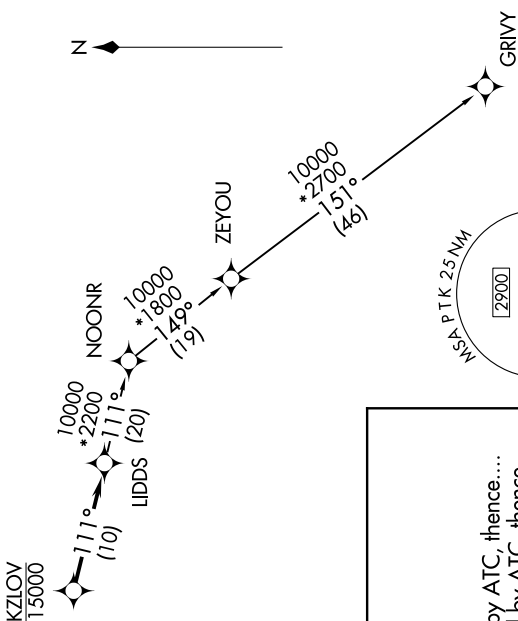
**TOP ALTITUDE:
ASSIGNED BY ATC**



NOTE: Turbopjet departures at/above 10000,
maintain 280K until advised by ATC.

TAKEOFF MINIMUMS:

Rwys 18, 36: NA - Environmental.
Rwys 9L/R, 27L/R: Standard.



NOTE: Chart not to scale.

DEPARTURE ROUTE DESCRIPTION

TAKEOFF RUNWAYS 9L/R: Climb on heading 095° or as assigned by ATC, thence....
TAKEOFF RUNWAYS 27L/R: Climb on heading 275° or as assigned by ATC, thence....

....for RADAR vectors to cross KZLOV at or below 15000, then on track 111° to LIDDS,
then on (transition). Maintain ATC assigned altitude, expect filed altitude 10 minutes
after departure.

GRIVY TRANSITION (LIDDS4.GRIVY):

EC-1, 12 JUN 2025 to 10 JUL 2025