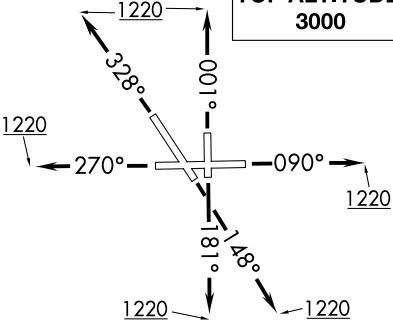


CHICAGO DEP CON
133.5 349.0
ATIS
125.85
GND CON
121.7
AURORA TOWER ★
120.6 (CTAF)

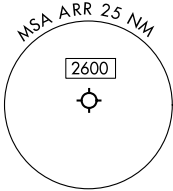
RNAV 1 - DME/DME/IRU or GPS.
RADAR required. RADAR required for
non-GPS equipped aircraft.

TOP ALTITUDE:
3000



TAKEOFF MINIMUMS:
Rwys 9, 15, 18, 27, 33, 36: Standard.

NOTE: Turbojet departures maintain 250K
until advised by ATC.
NOTE: ROBERTS Transition: For aircraft inbound
to CMI or STL, or as assigned by ATC.

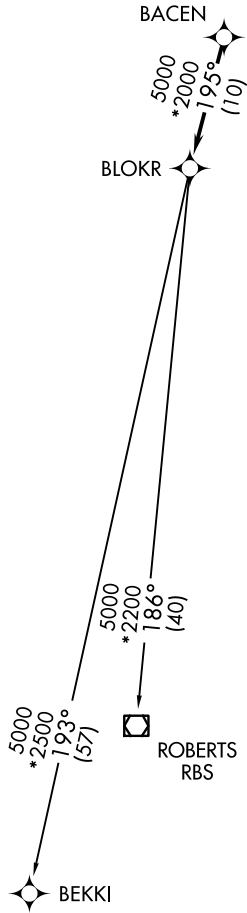


DEPARTURE ROUTE DESCRIPTION

- TAKEOFF RUNWAY 9: Climb on heading 090° to 1220, then
as assigned by ATC, for vectors to BACEN, thence. . . .
TAKEOFF RUNWAY 15: Climb on heading 148° to 1220, then
as assigned by ATC, for vectors to BACEN, thence. . . .
TAKEOFF RUNWAY 18: Climb on heading 181° to 1220, then
as assigned by ATC, for vectors to BACEN, thence. . . .
TAKEOFF RUNWAY 27: Climb on heading 270° to 1220, then
as assigned by ATC, for vectors to BACEN, thence. . . .
TAKEOFF RUNWAY 33: Climb on heading 328° to 1220, then
as assigned by ATC, for vectors to BACEN, thence. . . .
TAKEOFF RUNWAY 36: Climb on heading 001° to 1220, then
as assigned by ATC, for vectors to BACEN, thence. . . .

. . . .on track 195° to BLOKR, then on (transition). Maintain
3000. Expect filed altitude 10 minutes after departure.

BEKKI TRANSITION (BLOKR7.BEKKI):
ROBERTS TRANSITION (BLOKR7.RBS):



NOTE: Chart not to scale.