

(ADELL7.ADELL) 24305

AL-5104 (FAA)

DUPAGE (DPA)

ADELL SEVEN DEPARTURE (RNAV)

CHICAGO/WEST CHICAGO, ILLINOIS

RNAV 1 - DME/DME/IRU or GPS.
RADAR required. RADAR required for non-GPS equipped aircraft.

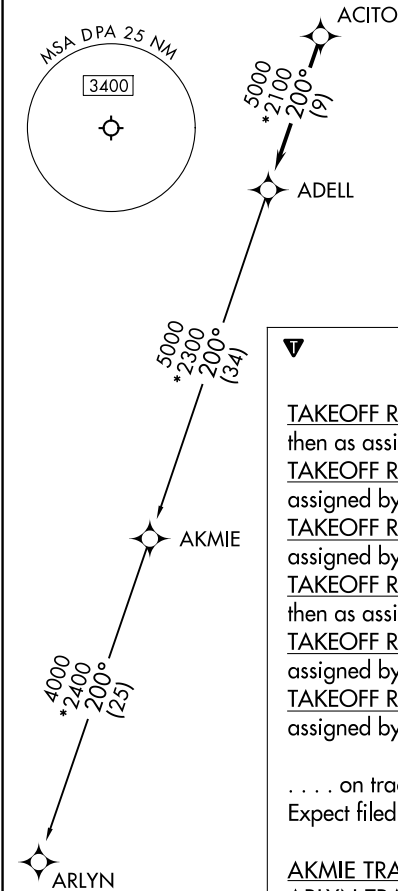
CHICAGO DEP CON
133.5 349.0
ATIS
132.075
GND CON
121.8
DUPAGE TOWER
120.9 257.8

TOP ALTITUDE:
3000

TAKEOFF MINIMUMS:

Rwys 2L/R, 10, 20L/R, 28, 33: Standard.
Rwy 15: 300-1 or standard with minimum climb of 205' per NM to 1000.

NOTE: Turbojet departures maintain 250K until advised by ATC.
NOTE: AKMIE Transition: For aircraft inbound to BMI, SPI, PIA, or as assigned by ATC.



DEPARTURE ROUTE DESCRIPTION

TAKEOFF RUNWAYS 2L/R: Climb on heading 015° to 1260, then as assigned by ATC, for vectors to ACITO, thence . . .
TAKEOFF RUNWAY 10: Climb on heading 097° to 1260, then as assigned by ATC, for vectors to ACITO, thence . . .
TAKEOFF RUNWAY 15: Climb on heading 149° to 1260, then as assigned by ATC, for vectors to ACITO, thence . . .
TAKEOFF RUNWAYS 20L/R: Climb on heading 195° to 1260, then as assigned by ATC, for vectors to ACITO, thence . . .
TAKEOFF RUNWAY 28: Climb on heading 277° to 1260, then as assigned by ATC, for vectors to ACITO, thence . . .
TAKEOFF RUNWAY 33: Climb on heading 329° to 1260, then as assigned by ATC, for vectors to ACITO, thence . . .

. . . on track 200° to ADELL, then on (transition). Maintain 3000. Expect filed altitude 10 minutes after departure.

AKMIE TRANSITION (ADELL7.AKMIE):
ARLYN TRANSITION (ADELL7.ARLYN):

ADELL SEVEN DEPARTURE (RNAV)

CHICAGO/WEST CHICAGO, ILLINOIS

(ADELL7.ADELL) 31OCT24

DUPAGE (DPA)