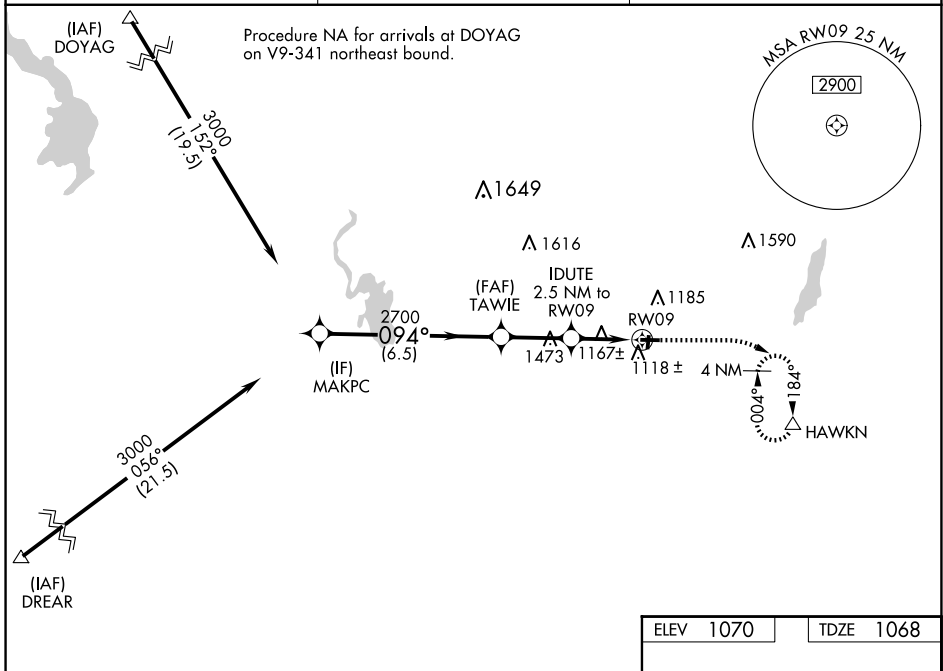


WAAS CH 42743 W09A	APP CRS 094°	Rwy Idg TDZE Apf Elev	3401 1068 1070
--	------------------------	-----------------------------	---

RNAV (GPS) RWY 9

HARTFORD MUNI (HXF)

RNP APCH.		MISSED APPROACH: Climb to 1700 then climbing right turn to 3000 direct HAWKN and hold, continue climb-in-hold to 3000.
<p>▼ Circling NA to Rwys 18 and 36.</p> <p>▲ NA Baro-VNAV NA.</p> <p>Use Westbend altimeter setting.</p>		
ETB AWOS-3 120.0	MILWAUKEE APP CON 125.35 307.0	UNICOM 123.0 (CTAF) 0



EC-3, 12 JUN 2025 to 10 JUL 2025

EC-3, 12 JUN 2025 to 10 JUL 2025

ELEV 1070	TDZE 1068
-----------	-----------

MIRL Rwy 9-27 0
REIL Rws 9 and 27 0

	MAKPC	TAWIE	IDUTE	RWY 09
	3000	2700	2700	1900
	GP 3.00°			
	TCH 40			
	6.5 NM	2.5 NM	2.5 NM	
CATEGORY	A	B	C	D
LPV DA	1372-7/8	304 (400-7/8)		NA
LNAV/VNAV DA	1372-7/8	304 (400-7/8)		NA
LNAV MDA	1480-1	412 (500-1)		NA
CIRCLING	1560-1	490 (500-1)		NA