

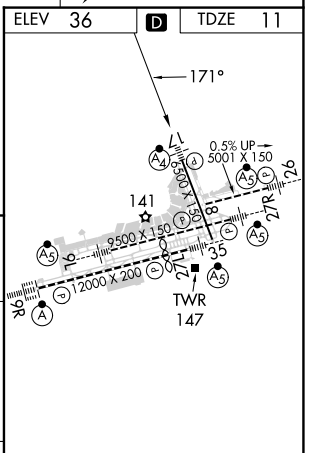
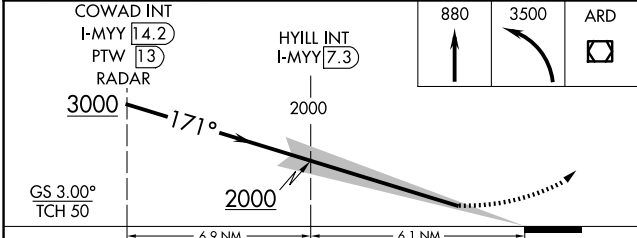
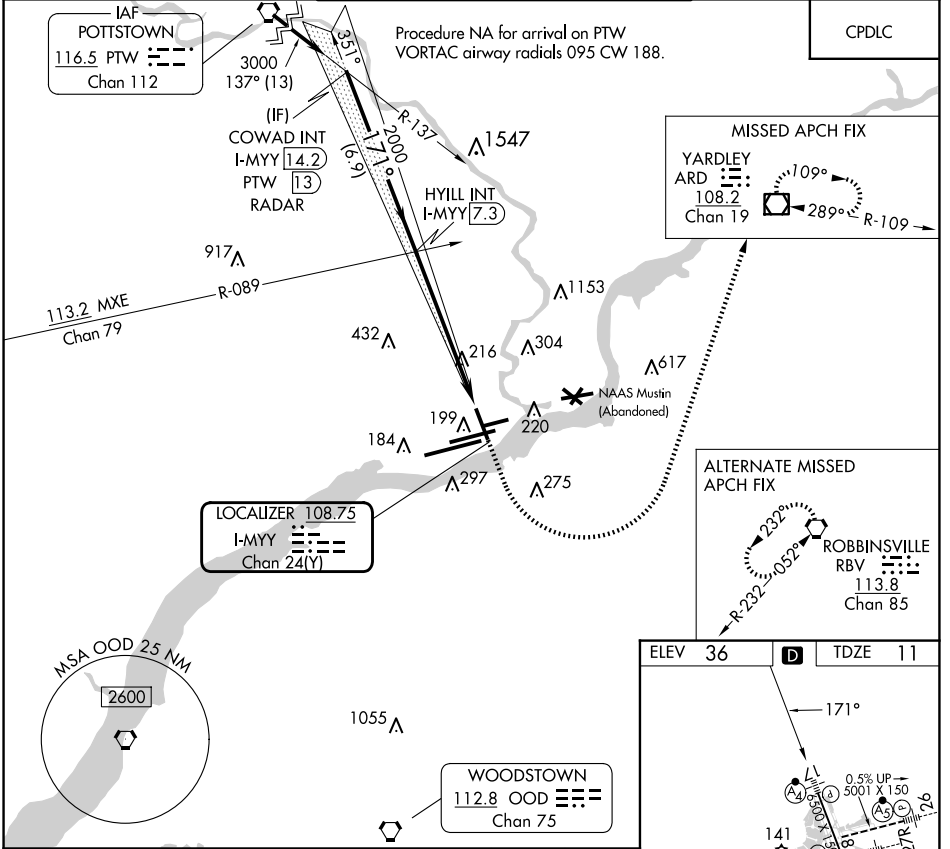
LOC/DME I-MYY 108.75 Chan 24 (Y)	APP CRS 171°	Rwy Ldg TDZE Apt Elev	6500 11 36
--	------------------------	-----------------------------	---------------------------------------

ILS V RWY 17 (CONVERGING)

PHILADELPHIA INTL (PHL)

RADAR required.		MALSF	MISSED APPROACH: Climb to 880 then climbing left turn to 3500 direct ARD VOR/DME and hold.	
Simultaneous approach authorized. Rwy 17 helicopter visibility reduction below 3/4 SM NA.				

D-ATIS ARR 133.4 DEP 135.925	PHILADELPHIA APP CON 124.35 319.15	PHILADELPHIA TOWER 118.5 327.05 (Rwys 9L/27R, 8/26 and 17/35) 135.1 327.05 (Rwy 9R/27L)	GND CON 121.9 348.6	CLNC DEL 118.85 348.6
--	--	---	-------------------------------	---------------------------------



CATEGORY	A	B	C	D
S-ILS 17		664-1 5/8	653 (700-1 5/8)	

NE-4, 12 JUN 2025 to 10 JUL 2025

NE-4, 12 JUN 2025 to 10 JUL 2025