

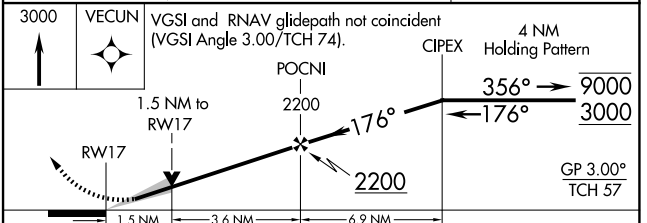
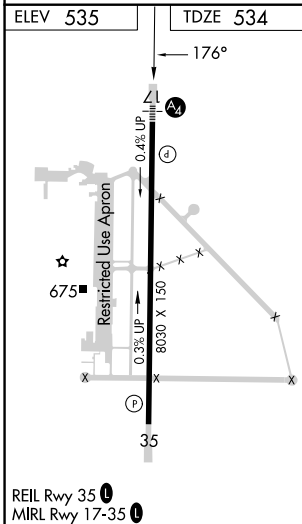
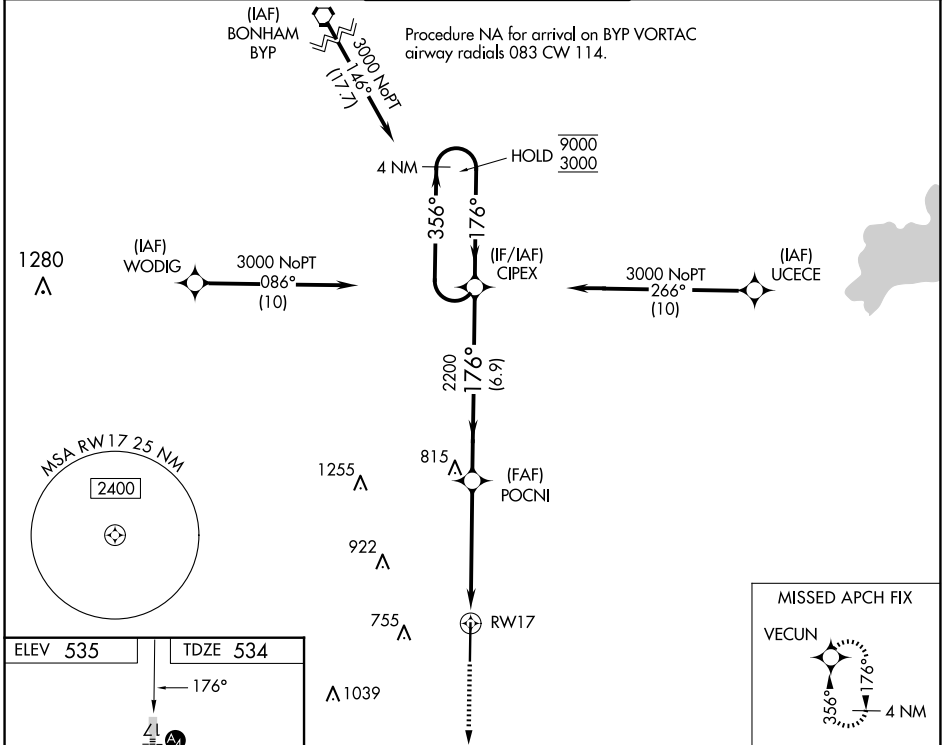
WAAS CH <b>86205</b> <b>W17A</b>	APP CRS <b>176°</b>	Rwy Idg TDZE <b>534</b> Apt Elev <b>535</b>	<b>8030</b>
--	------------------------	---	-------------

# RNAV (GPS) RWY 17

MAJORS (GVT)

RNP APCH - GPS.	MALS	MISSED APPROACH: Climb to 3000 direct VECUN and hold.
<p>▼ Inop table does not apply to LPV all Cats and LNAV Cats A and B.</p> <p>▲ For uncompensated Baro-VNAV systems, LNAV/VNAV NA below -5°C or above 54°C. For inop ALS, increase LNAV/VNAV all Cats visibility to 1½ SM and LNAV Cat E visibility to 1½ SM.</p>		

AWOS-3 <b>133.425</b>	FORT WORTH CENTER <b>132.025 360.75</b>	MAJORS TOWER ★ <b>118.65</b> (CTAF) <b>0 385.425</b>	GND CON <b>121.7 335.8</b>	UNICOM <b>122.95</b>
--------------------------	--	---	-------------------------------	-------------------------



CATEGORY	A	B	C	D	E
LPV DA		734-1	200 (200-1)		
LNAV/VNAV DA		943-1	409 (500-1)		
LNAV MDA	1060-1	526 (600-1)	1060-1¼	526 (600-1¼)	
CIRCLING	1060-1	1080-1	1080-1½	1240-2¼	1300-2¾
	525 (600-1)	545 (600-1)	545 (600-1½)	705 (800-2¼)	765 (800-2¾)

SC-2, 12 JUN 2025 to 10 JUL 2025

SC-2, 12 JUN 2025 to 10 JUL 2025